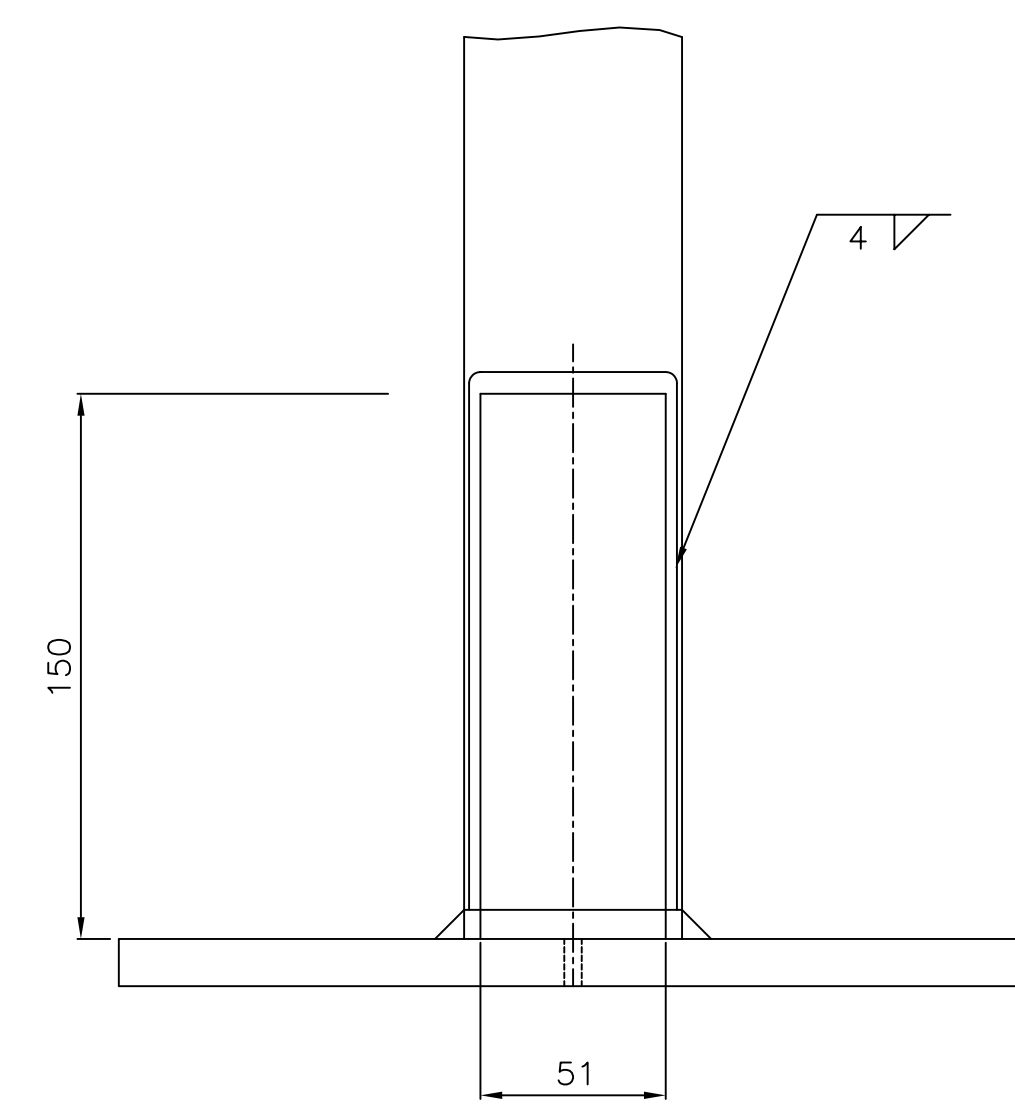
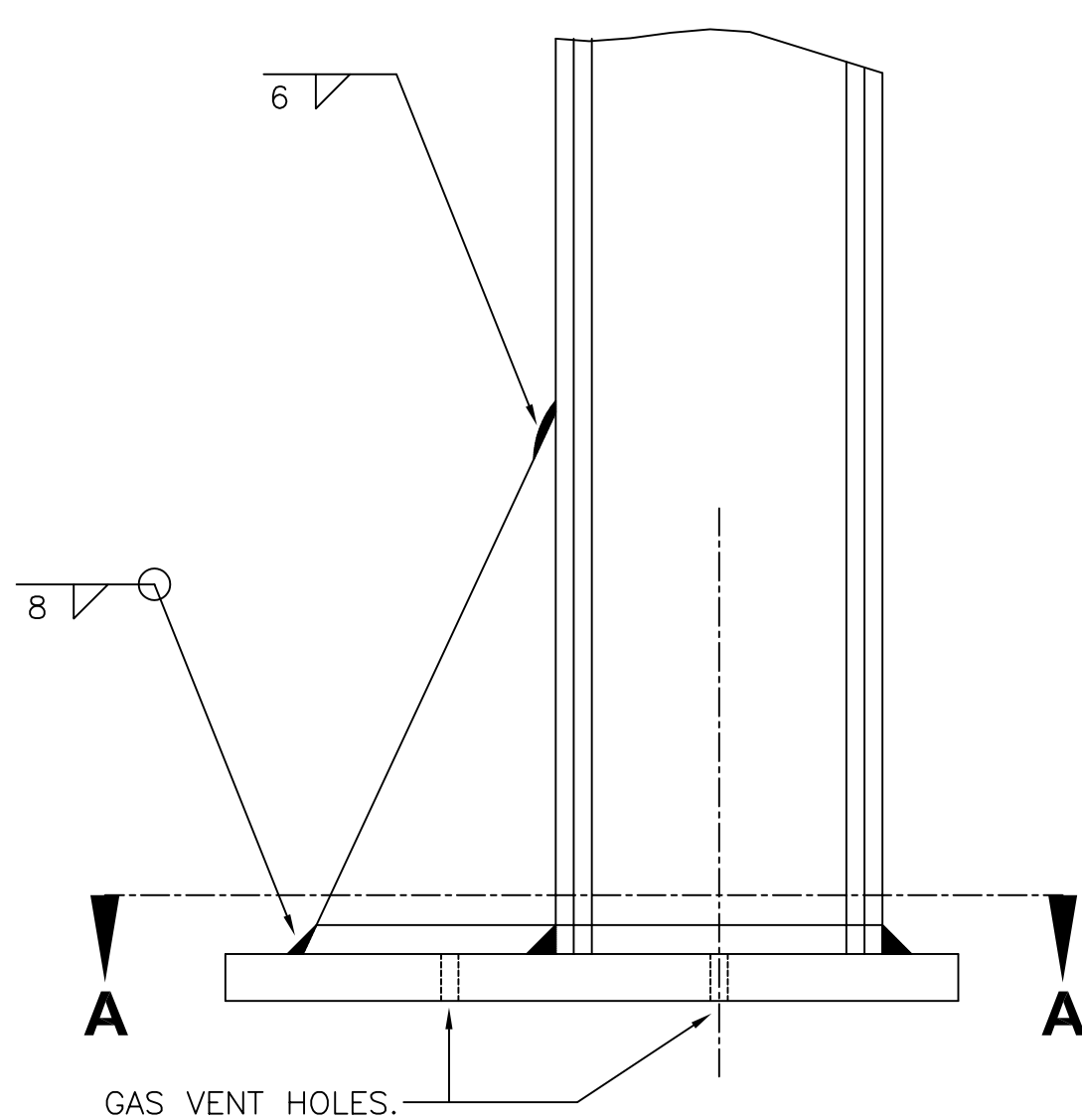
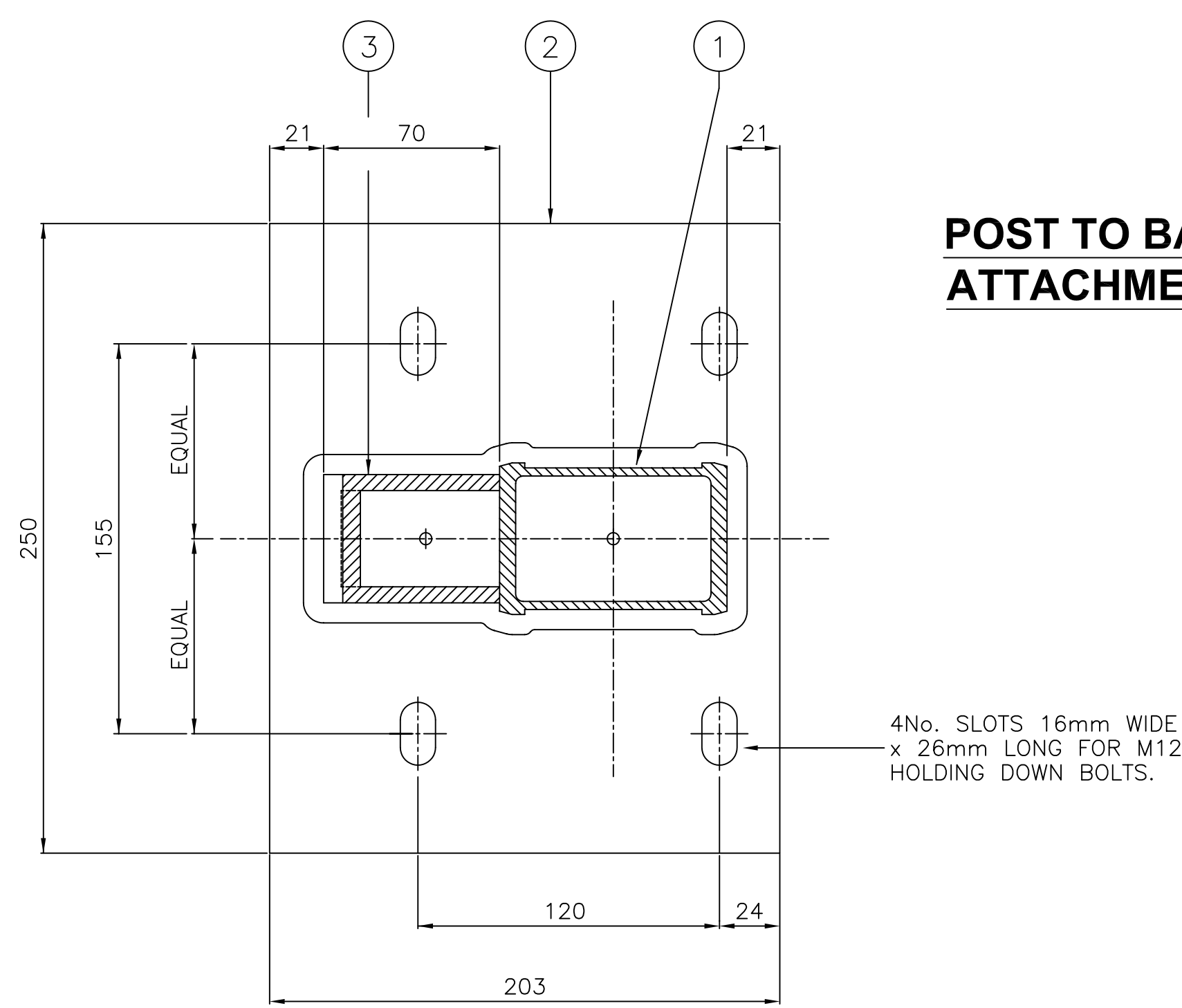


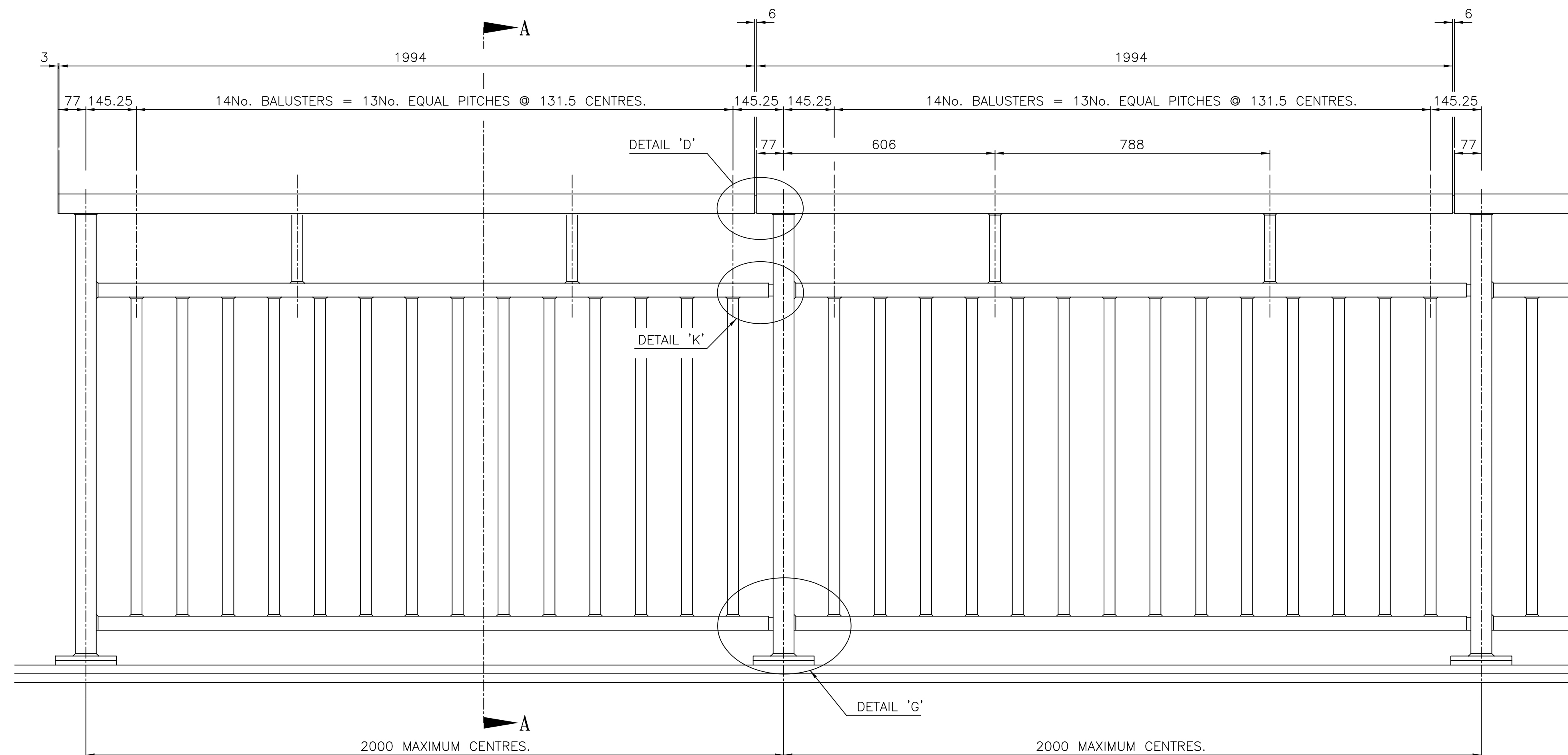
**SECTION A-A  
STANDARD POST DETAILS**



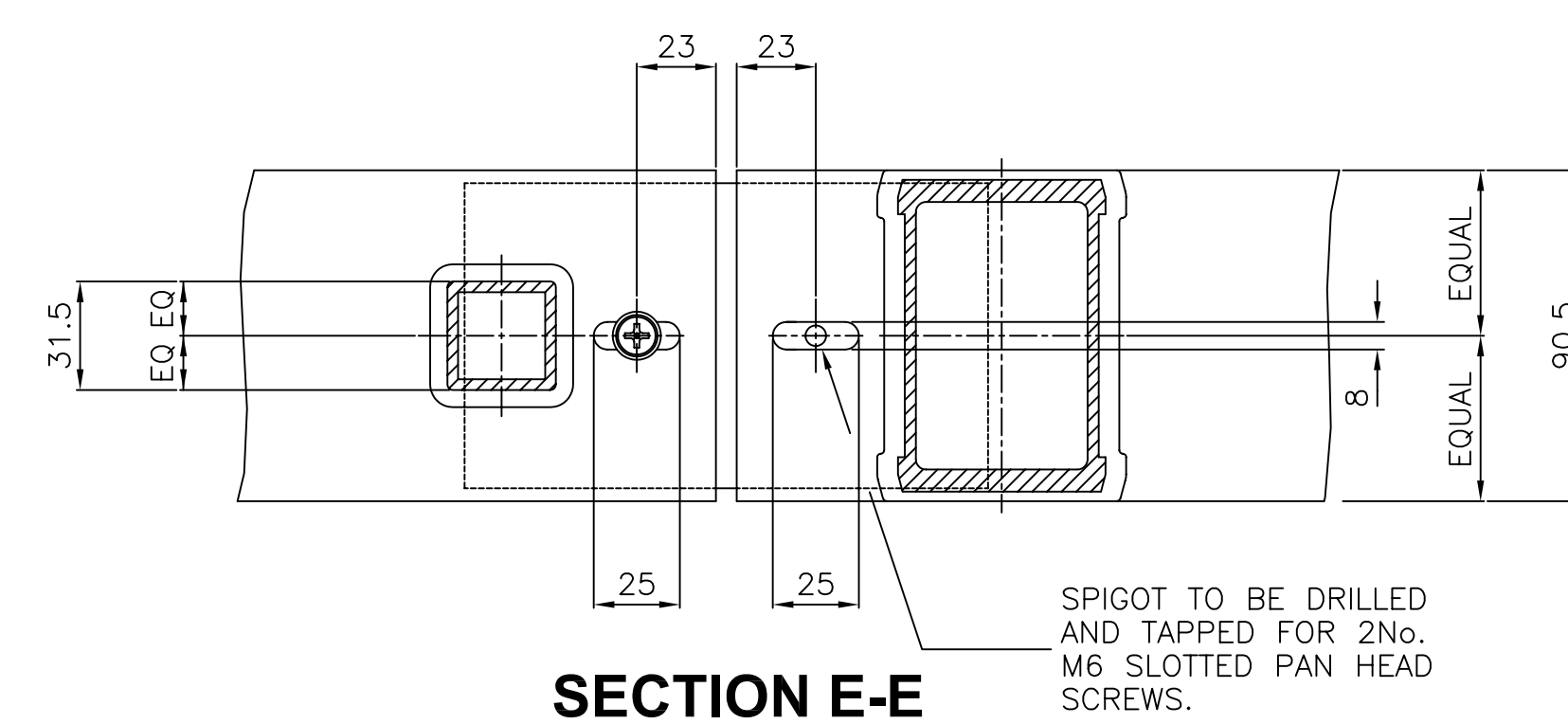
**POST TO BASEPLATE  
ATTACHMENT DETAILS**



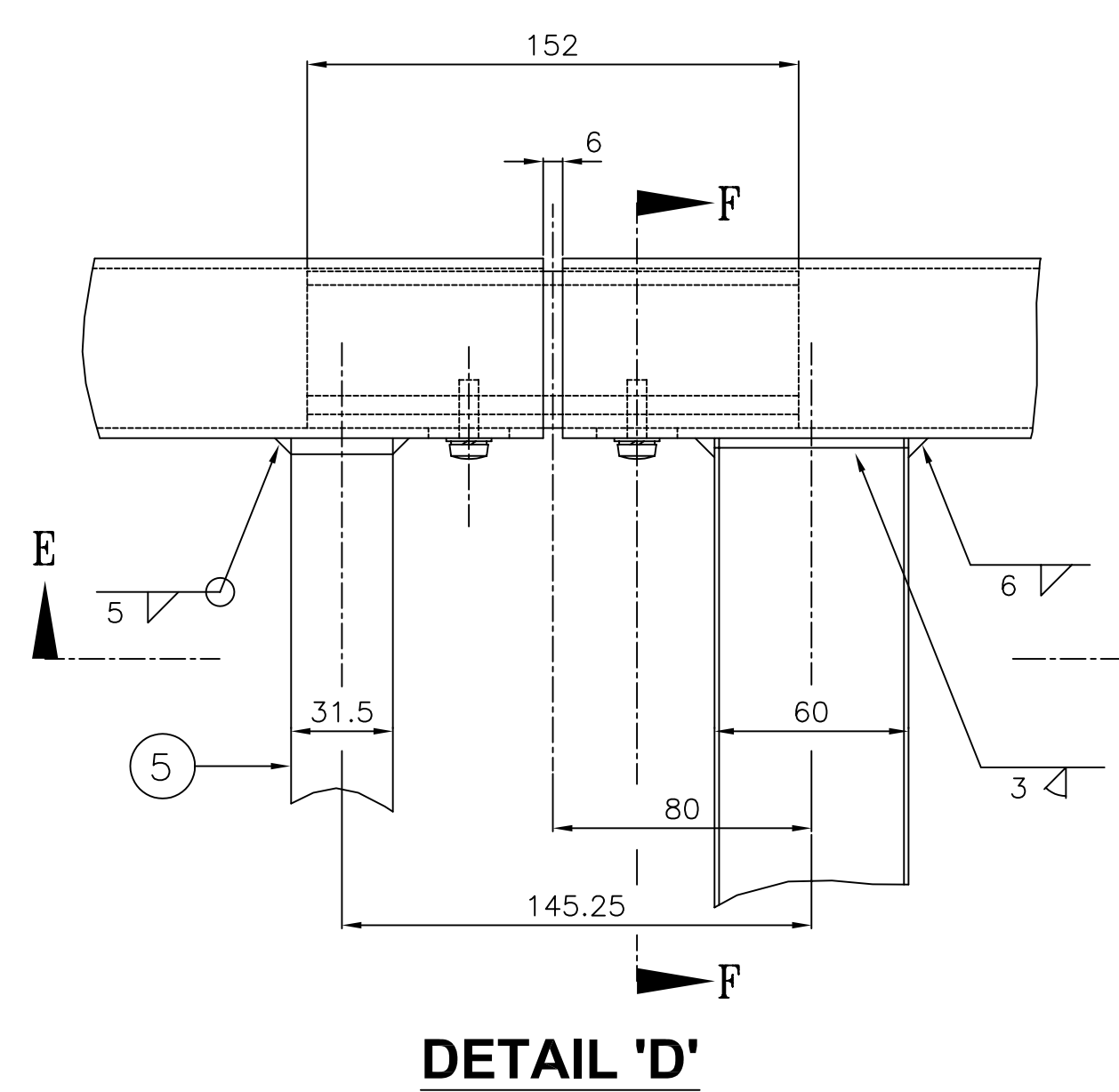
**SECTION A:A**



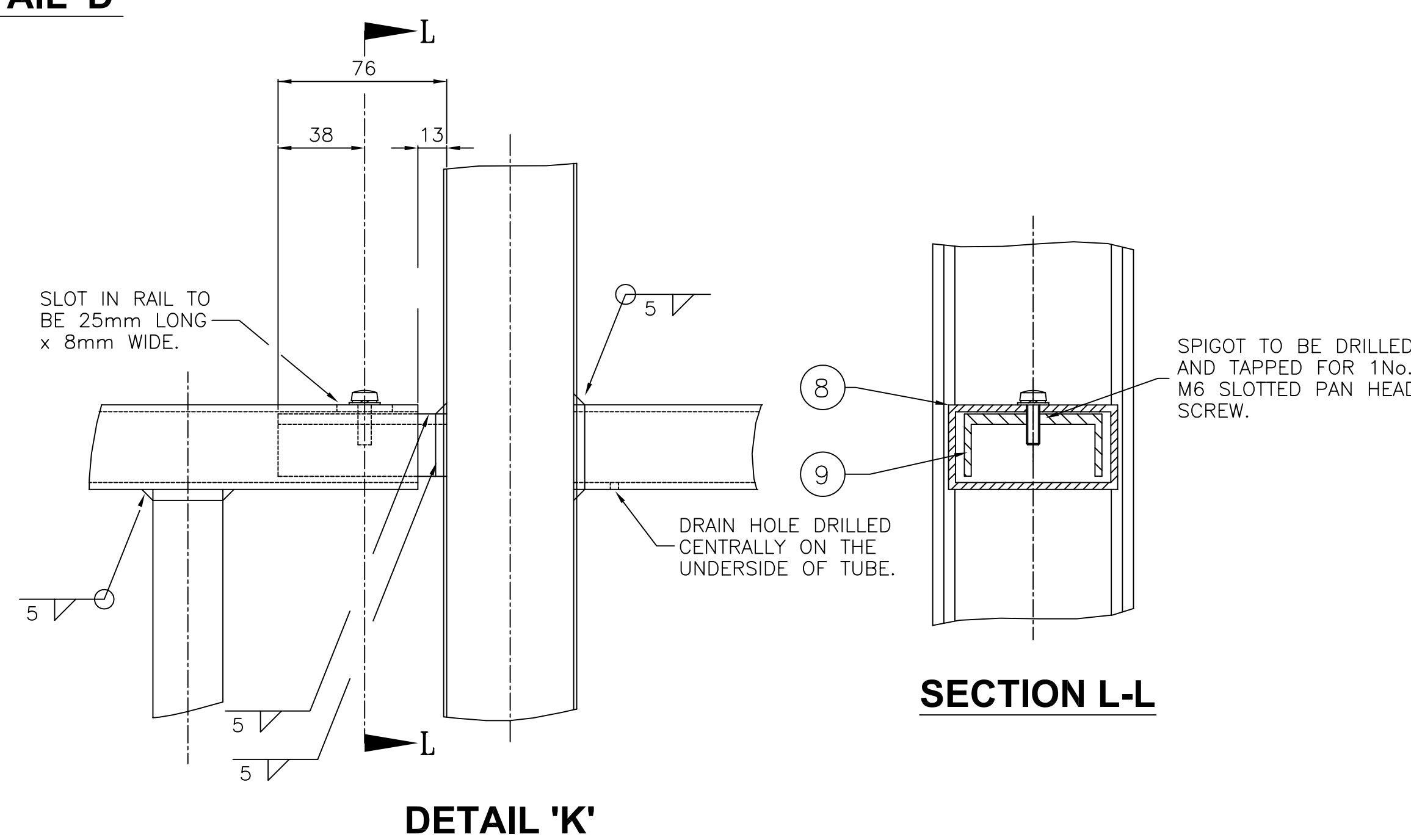
**TYPICAL PARAPET LAYOUT**



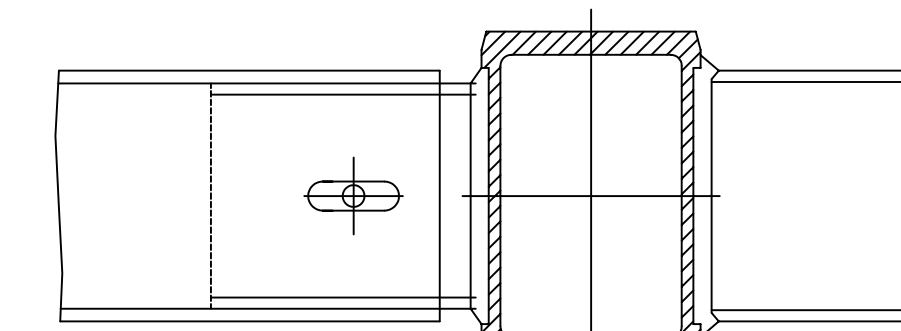
**SECTION E-E**



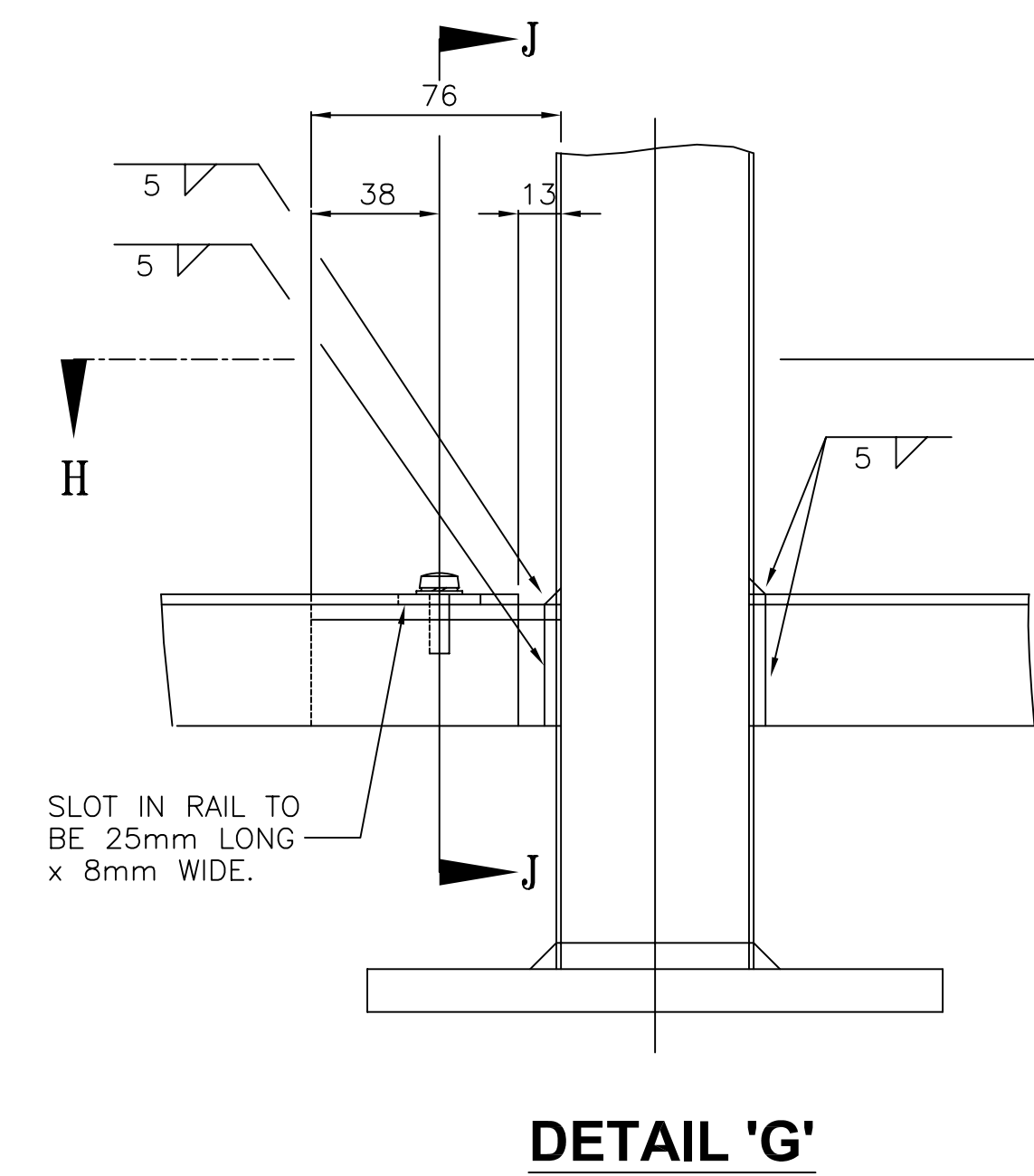
**DETAIL 'D'**



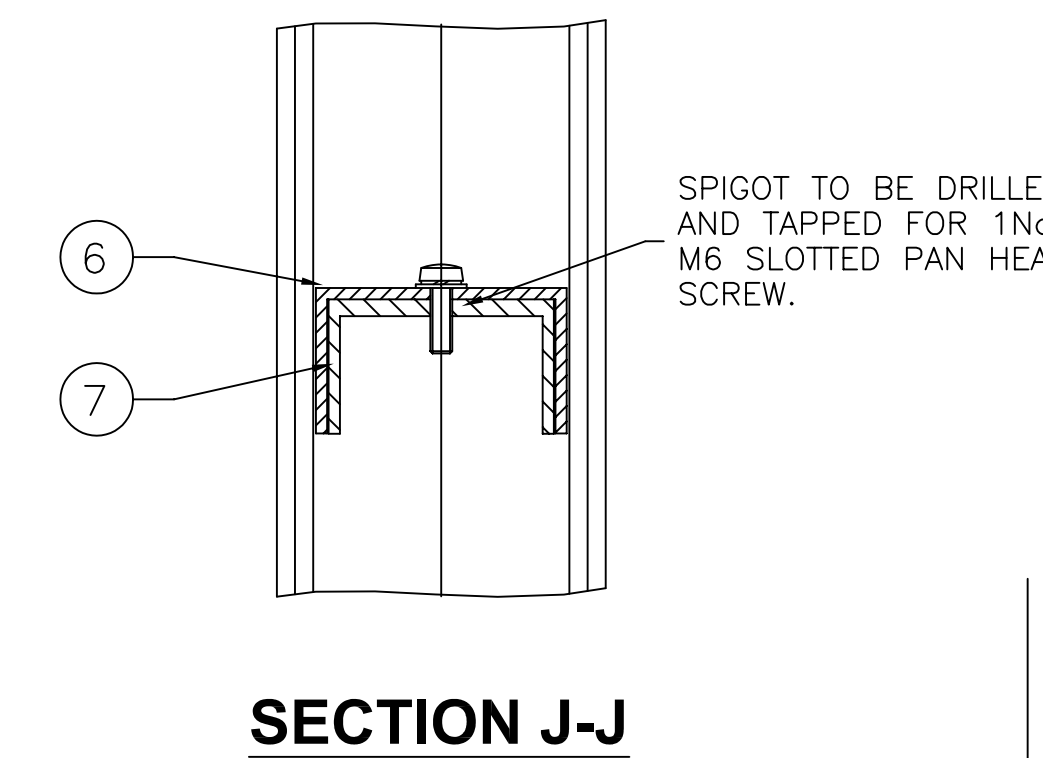
**DETAIL 'K'**



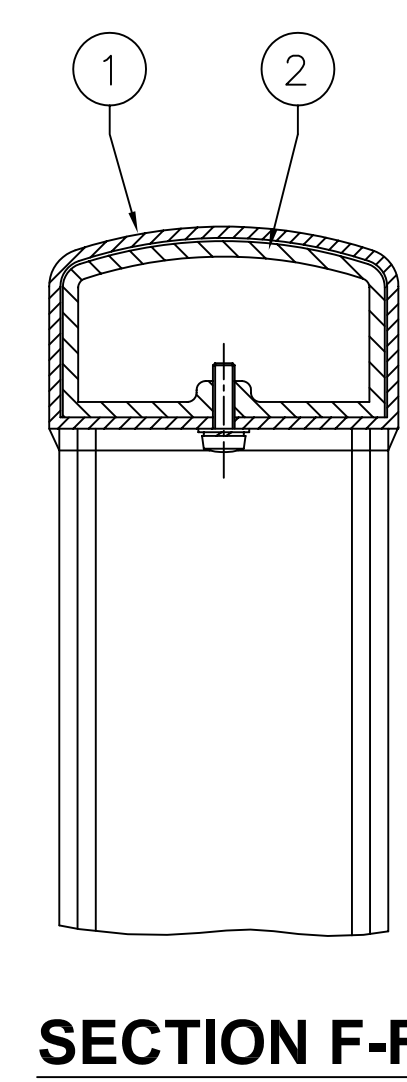
**SECTION H-H**



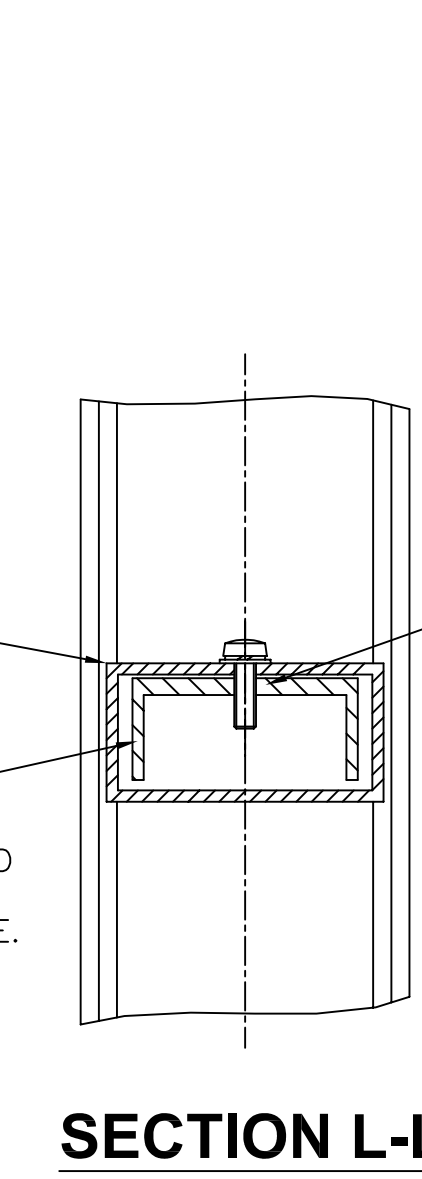
**DETAIL 'C'**



**SECTION J-J**



**SECTION F-F**



**SECTION L-L**

- GENERAL NOTES**
- ALL ALUMINIUM EXTRUSIONS ARE IN 6082 T6 ALLOY TO BS 1474
  - ALL ALUMINIUM ALLOY WELDING SHALL CONFORM TO BS 3571 - Pt 1
  - ALL SETSCREWS AND NUTS TO BE STAINLESS STEEL TO BS 6105 MATERIAL GRADE A4. SETSCREWS TO BE STRENGTH CLASS 80. WASHER MATERIAL TO BE STAINLESS STEEL TO BS 1449 - Pt 2 CONFORMING TO GRADE A4 OR A2 AS DEFINED IN BS 6105. RAIL JOINT SETSCREWS TO BE M6 x 20 LONG POSI-DRIVE PAN HEAD SCREWS EACH COMPLETE WITH ONE SPRING WASHER TO BS 4464 type B, AND ONE PLAIN WASHER TO BS 4320 form A. HOLDING DOWN BOLTS ARE TO BE M12 HEXAGON HEAD SET PINS AS APPROPRIATE.
  - LOCTITE GRADE 270 (OR SIMILAR APPROVED) TO BE APPLIED ON ERECTION TO ALL RAIL JOINT SETSCREWS. AT THE HOLDING DOWN BOLTS, CONTACT BETWEEN THE STAINLESS STEEL WASHER AND THE ALUMINIUM BASEPLATE SHALL BE AVOIDED BY THE USE OF A POLYPROPYLENE TOP HAT WASHER FITTED BETWEEN THE U/SIDE OF THE ST. STEEL WASHER AND THE TOP OF THE ALUMINIUM BASEPLATE.
  - UNDERSIDE OF BASEPLATES TO BE GIVEN AT LEAST TWO COATS OF AN ALKALI RESISTANT BITUMASTIC PAINT OR PITCH COMPLYING WITH BS 3416.
  - STANDARD ERECTION PROCEDURES ARE AVAILABLE ON REQUEST.

SECTION SCHEDULE		
1		TOP RAIL SECTION DES 13528
2		TOP RAIL SPIGOT SECTION DES 13529
3		POST SECTION DES 13527
4		BASEPLATE SECTION
5		BALUSTER SECTION 04861
6		BOTTOM RAIL SECTION 116264
7		BOTTOM RAIL SPIGOT SECTION DES 13531
8		INTERMEDIATE RAIL SECTION
9		INTERMEDIATE RAIL SPIGOT CUT FROM DES 13531

Rev	Date	By	Description

**MANUFACTURING TOLERANCES:**  
TOLERANCES AS SHOWN UNLESS STATED OTHERWISE.

DIMENSIONS:	TOLERANCES:
GREATER THAN 1000mm.	± 2mm
LESS THAN 1000mm.	± 1mm
ANGULAR DIMENSIONS:	± 0'15

NOTE: ALL ACCUMULATIVE TOLERANCES ARE TO BE CONTAINED WITHIN THE OVERALL TOLERANCE.

**SITE ERECTION TOLERANCES:**  
WILL VARY TO SUIT SITE CONDITIONS.

ALL STANDARDS QUOTED ARE DEEMED CURRENT AT THE DATE THE DRAWING IS ISSUED FOR APPROVAL, UNLESS OTHERWISE STATED.

THIS DRAWING TO BE USED ONLY WITH

W/O.No.

DRAWING TO BE RETURNED TO DRAWING OFFICE ON COMPLETION OF WORK.

**V&G**  
Varley and Gulliver Ltd.  
Alfred Street, Sparkbrook,  
Birmingham B12 8JR  
Tel. 44 (0) 121 773 2441  
Fax. 44 (0) 121 766 6875  
Website. www.v-and-g.co.uk

SCALE	DATE
DRN. R.J. STEAD	29.01.2004
CHK. R.J.S	
TITLE	
STANDARD DETAILS OF ALUMINIUM P4 PEDESTRIAN PARAPET (TYPE 406) FOR FOOTBRIDGES CARRYING CYCLISTS	
DRAWING NUMBER	
VG P4 - 406	