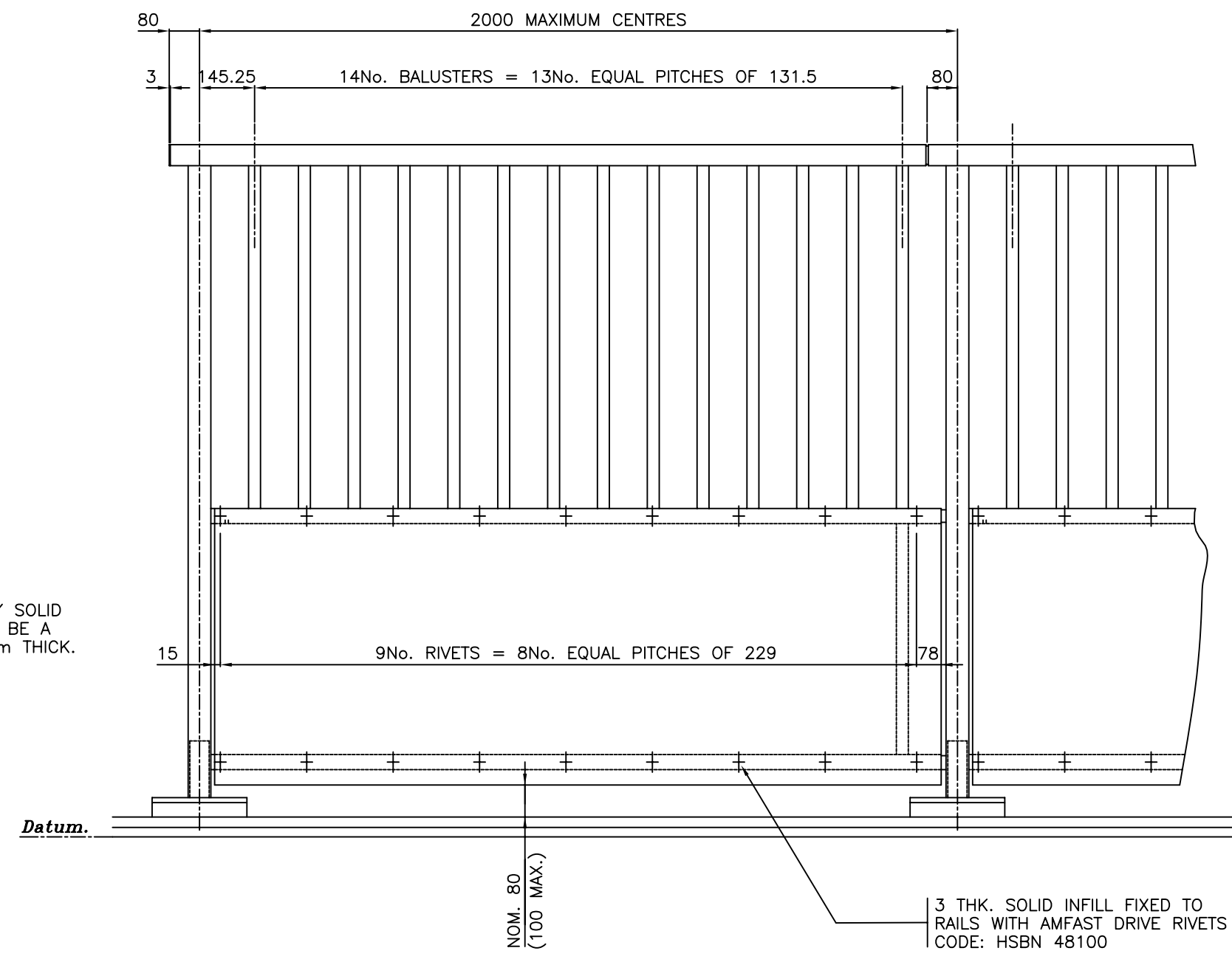
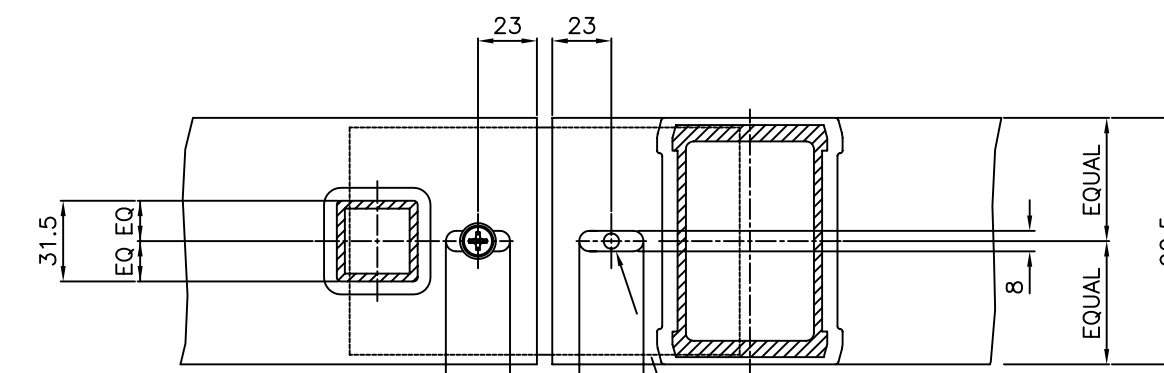


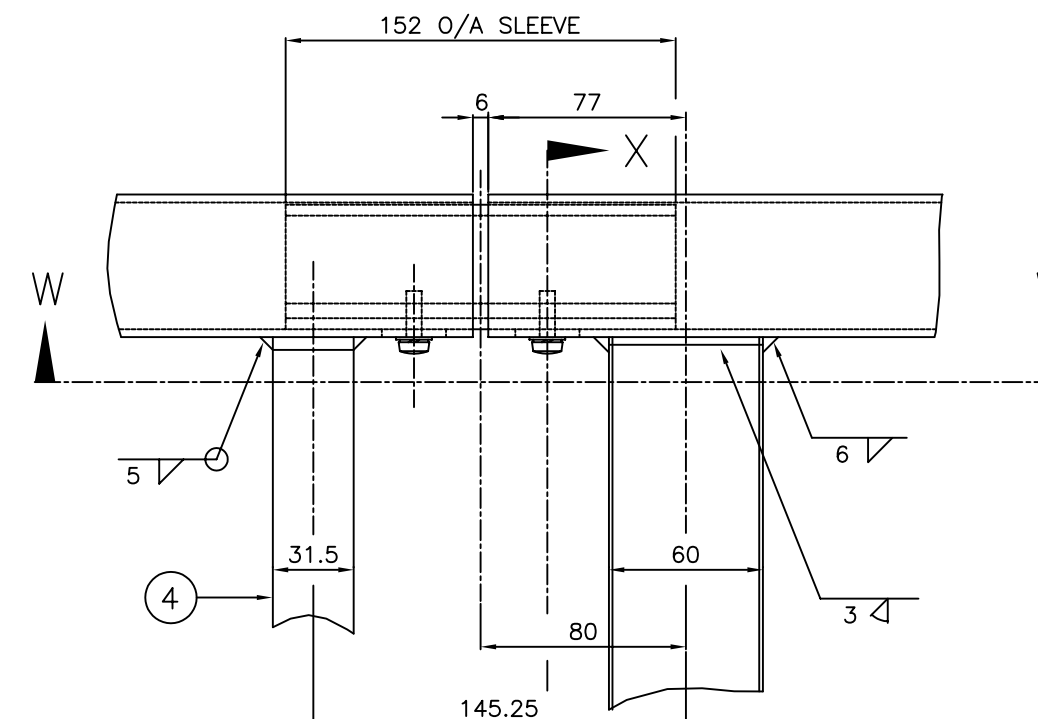
TYPICAL SECTION THROUGH PARAPET



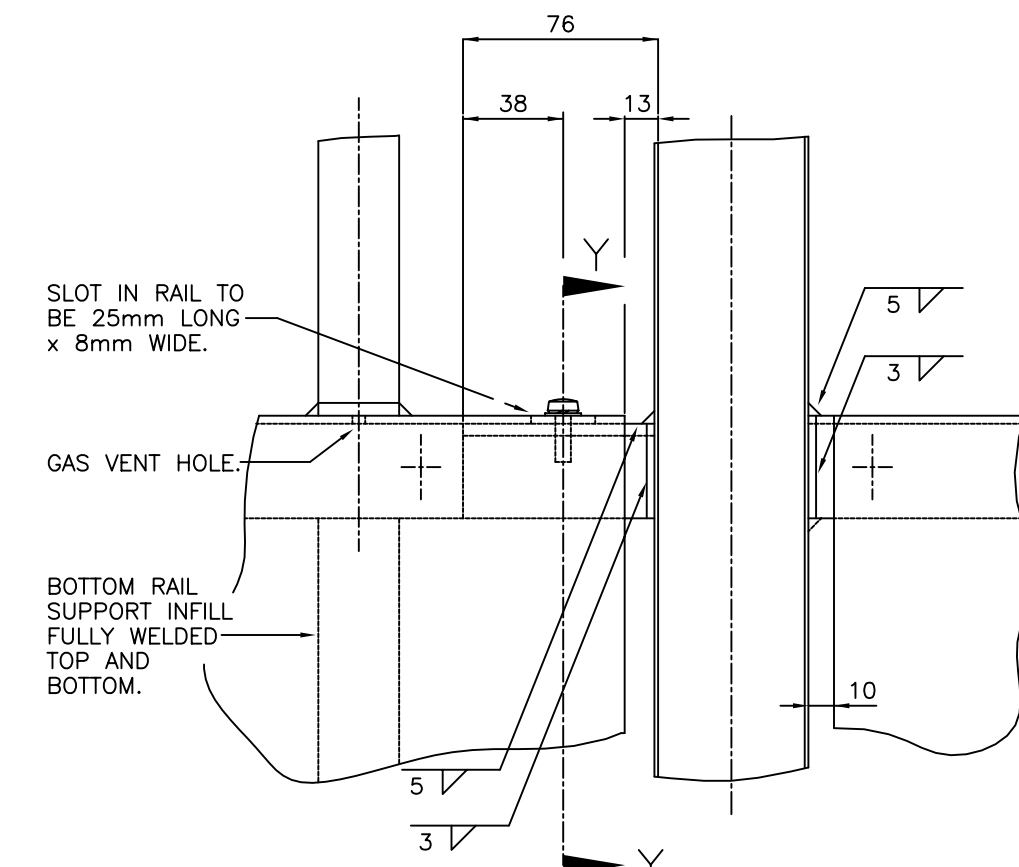
PART ELEVATION (TYPICAL)



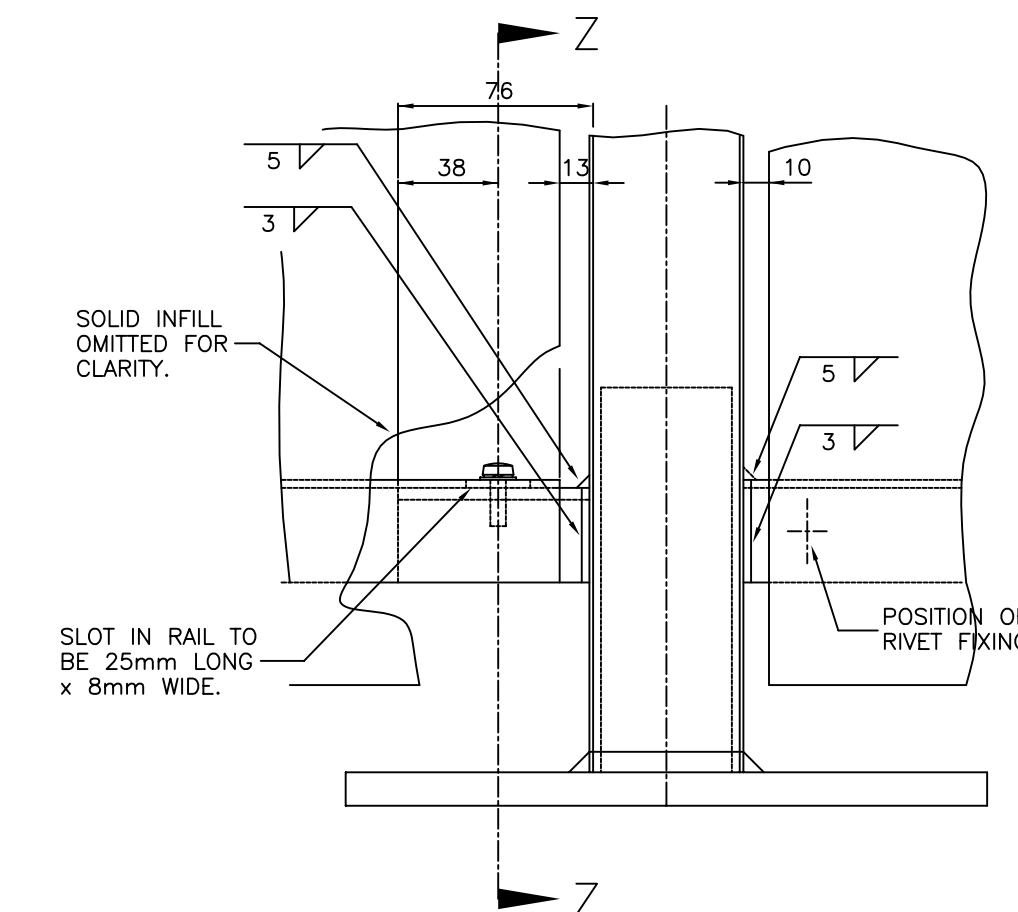
SECTION W:W



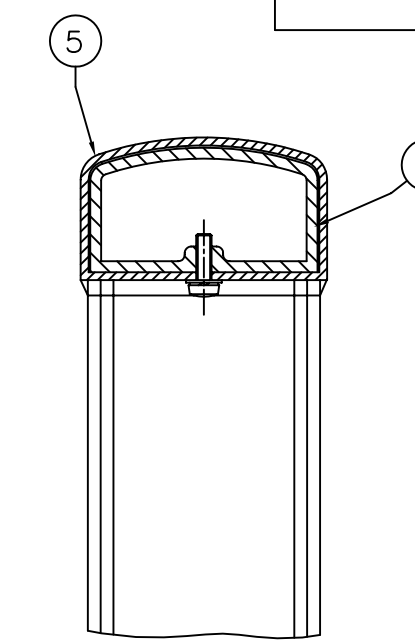
TOP RAIL TO POST ATTACHMENT AND RAIL JOINT DETAILS



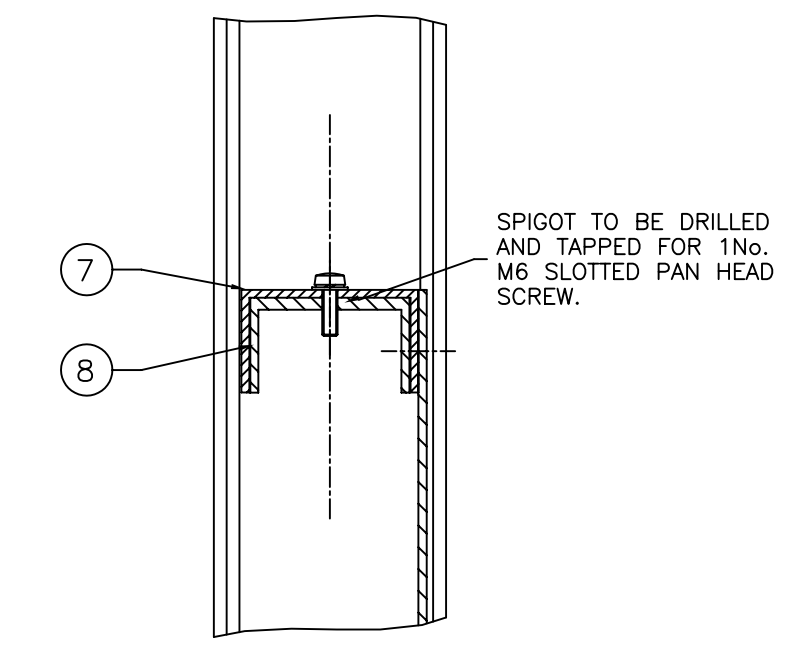
INTERMEDIATE RAIL TO POST ATTACHMENT DETAILS



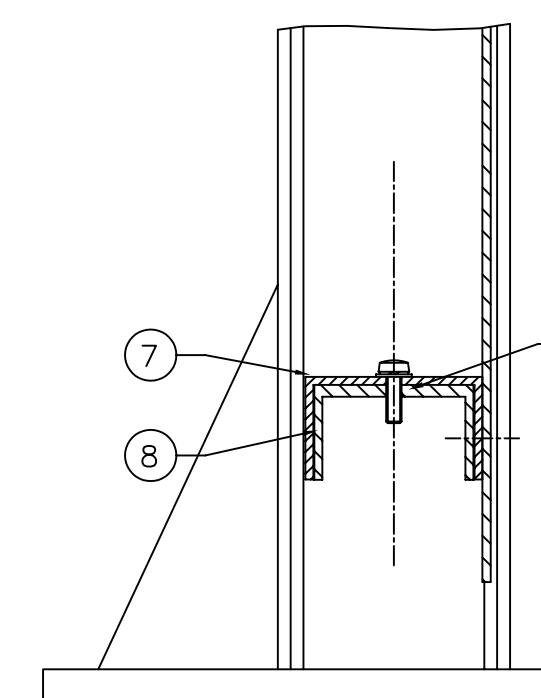
BOTTOM RAIL TO POST ATTACHMENT DETAILS



SECTION X:X

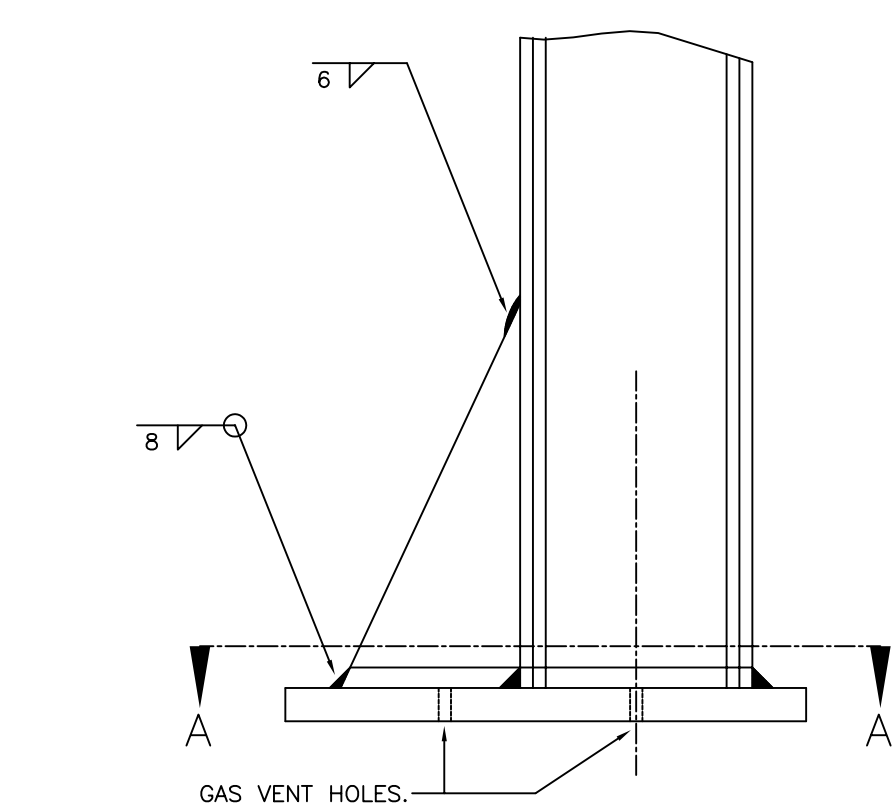


SECTION Y:Y



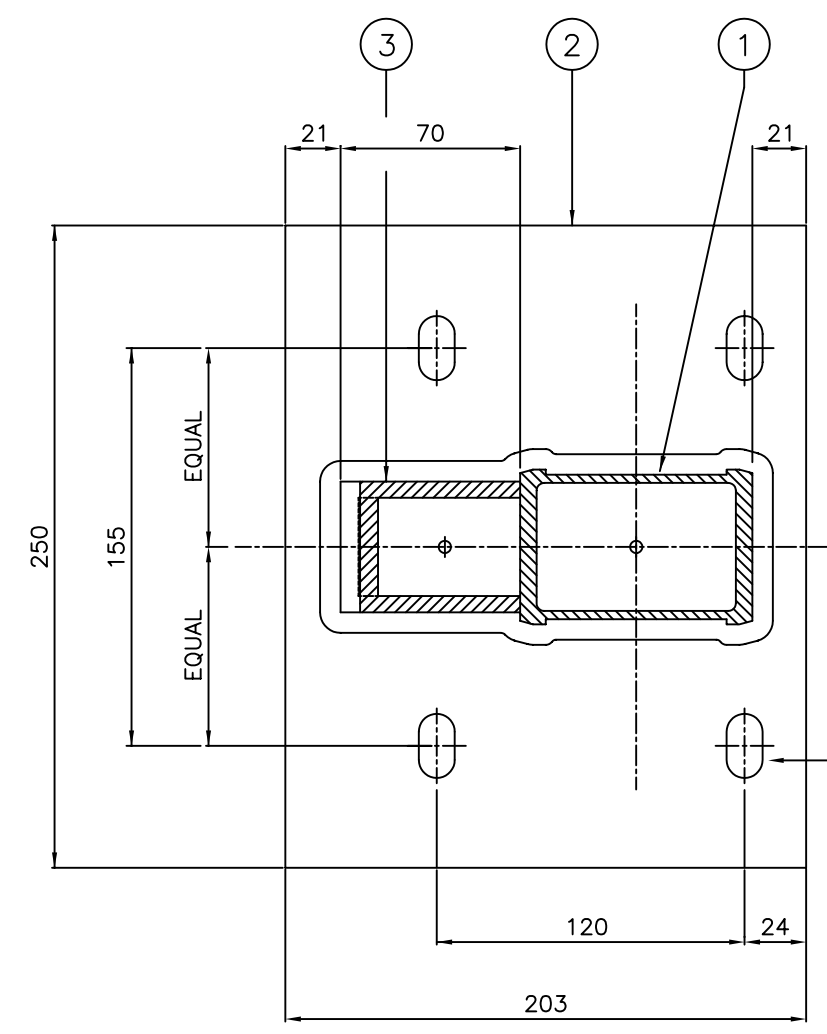
SECTION Z:Z

GENERAL NOTES		SECTION SCHEDULE	
1	ALL ALUMINIUM EXTRUSIONS ARE IN 6062 T6 ALLOY TO BS 1470 WITH THE ADDITIONAL REQUIREMENT THAT THE MINIMUM ELONGATION ON 50mm SHALL BE 10%.	1	POST SECTION DES 13527
2	ALL ALUMINIUM ALLOY WELDING SHALL CONFORM TO BS 5911 : Pt 1 AND THE REQUIREMENTS OF BS 6799 : Pt 1.	2	BASEPLATE SECTION DES 6875
3	ALL STITCHING AND NUTS TO BE STAINLESS STEEL TO BS 6105 MATERIAL GRADE A1. STITCHING TO BE STRENGTH CLASS 80. WORKER MATERIAL TO BE STAINLESS STEEL TO BS 1444 : Pt 2 CONFORMING TO GRADE A1 OR A2 AS DEFINED IN BS 6105.	3	DES 9949 CUT TO OBTAIN GUSSET
4	THE HOLDING DOWN ARRANGEMENT SHALL BE IN ACCORDANCE WITH THE SPECIFICATION FOR HIGHWAY WORKS VOLUME 1 OF THE MANUAL OF CONTRACT DOCUMENTS FOR HIGHWAY WORKS.	4	BALLUSTER SECTION DES 13532
5	LOCITE GRADE 270 (OR SIMILAR APPROVED) TO BE APPLIED ON ERECTION TO ALL RAIL JOINT STITCHES AS THE HOLDING DOWN BOLTS CONTACT BETWEEN THE STAINLESS STEEL NUTS AND THE ALUMINIUM BASEPLATE SHALL BE AVOIDED BY THE USE OF A FLAT NICKER MANUFACTURED FROM AN INERT MATERIAL. THE SURFACE OF THE HOLDING DOWN BOLTS ARE TO BE WET HEADON HEAD BOLTS OF SUFFICIENT LENGTH TO GIVE THE ENGAGEMENT REQUIRED IN BS 6799 Pt 1.	5	TOP RAIL SECTION DES 13528
6	UNDERSIDE OF BASEPLATES TO BE GIVEN AT LEAST TWO COATS OF AN ALUMINE RESISTANT BITUMASTIC PAINT OR PITCH COMPLYING WITH BS 5416.	6	GENERAL THICKNESS 4.25mm TOP RAIL SPOOT SECTION DES 13529
7	RIVETS SHALL CONSIST OF AMFAST DRIVE RIVETS, CODE HSN 48100, OR SIMILAR APPROVED.	7	INTERMEDIATE & BOTTOM RAIL SECTION DES 13530
8	FINAL TWO FIGURES IN RIVET CALL UP CODES DENOTES GRP RANGE - ADJUST AS NECESSARY.	8	INTERMEDIATE & BOTTOM RAIL SPOOT SECTION DES 13531



SECTION A:A

POST TO BASEPLATE ATTACHMENT DETAILS



Rev	Date	By	Description
MANUFACTURING TOLERANCES.			
TOLERANCES AS SHOWN UNLESS STATED OTHERWISE.			
DIMENSIONS.		TOLERANCES.	
GREATER THAN 1000mm.	±	2mm	
LESS THAN 1000mm.	±	1mm	
ANGULAR DIMENSIONS.	±	0'15"	
NOTE: ALL ACCUMULATIVE TOLERANCES ARE TO BE CONTAINED WITHIN THE OVERALL TOLERANCE.			
SITE ERECTION TOLERANCES.			
WILL VARY TO SUIT SITE CONDITIONS.			
ALL STANDARDS QUOTED ARE DEEMED CURRENT AT THE DATE THE DRAWING IS ISSUED FOR APPROVAL UNLESS OTHERWISE STATED.			
THIS DRAWING TO BE USED ONLY WITH			
W/O.No.			
DRAWING TO BE RETURNED TO DRAWING OFFICE ON COMPLETION OF WORK.			
V&G			
Varley and Gulliver Ltd.			
Alfred Street, Sparkbrook, Birmingham B12 8JR			
Tel. 44 (0) 121 773 2441			
Fax. 44 (0) 121 766 6875			
Website. www.v-and-g.co.uk			
SCALE		DATE 14.11.2003	
DRN. R.A.COOKIE	CHK. R.A.C.		
TITLE			
STANDARD DETAILS OF ALUMINIUM P4 BRIDLEWAY PARAPET (TYPE 405)			
DRAWING NUMBER			
VG P4 - 405			