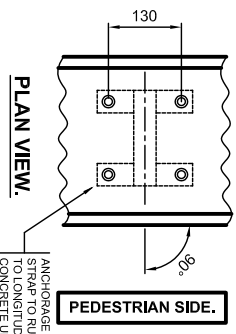
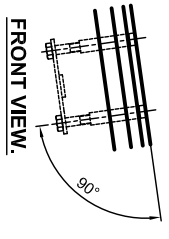


ALTERNATIVE END PANEL.
(WITHOUT OVERHANG.)

THE CONCRETE PLINTH IS TO BE DESIGNED BY OTHERS TO RESIST WITHOUT DAMAGE THE FORCES TRANSMITTED BY THE PARAPET UNDER LOAD.

ANCHORAGES TO BE ALIGNED PERPENDICULAR TO THE LONGITUDINAL ALIGNMENT OF THE CONCRETE PLINTH.



ANCHORAGE DETAILS.

APPROVED ANCHORAGE UNITS
DRAWING NUMBER
VGAS/7.

OR OTHER APPROPRIATELY APPROVED CAST-IN OR DRILLED ANCHORAGE SYSTEM.

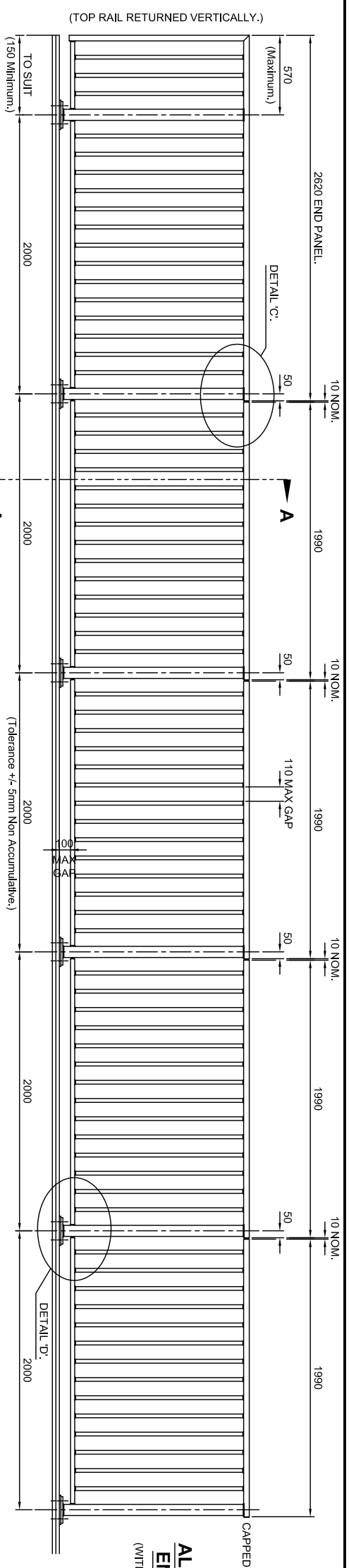
SECTION SCHEDULE

NO.	SECTION	DESCRIPTION	NOTES
1	TOP RAIL SECTION.	TOP RAIL SECTION.	NOTE: ALL ACCUMULATIVE TOLERANCES ARE TO BE CONTAINED WITHIN THE OVERALL TOLERANCE.
2	INTERMEDIATE RAIL SECTION.	INTERMEDIATE RAIL SECTION.	NOTE: ALL ACCUMULATIVE TOLERANCES ARE TO BE CONTAINED WITHIN THE OVERALL TOLERANCE.
3	POST SECTION.	POST SECTION.	NOTE: ALL ACCUMULATIVE TOLERANCES ARE TO BE CONTAINED WITHIN THE OVERALL TOLERANCE.
4	VERTICAL INFILL SECTION.	VERTICAL INFILL SECTION.	NOTE: ALL ACCUMULATIVE TOLERANCES ARE TO BE CONTAINED WITHIN THE OVERALL TOLERANCE.
5	BASEPLATE SECTION.	BASEPLATE SECTION.	NOTE: ALL ACCUMULATIVE TOLERANCES ARE TO BE CONTAINED WITHIN THE OVERALL TOLERANCE.

SCALE: 1:10
DATE: 10/11/2014
DWN: P.G.H. CHK: D.V.C.

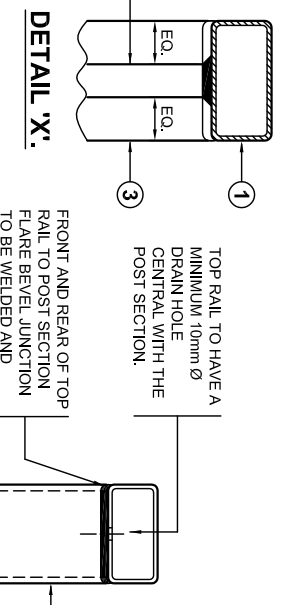
Varley and Gulliver Ltd.
Alfred Street, Sparkbrook, Birmingham B12 8JR
Tel: 44 (0) 121 773 2441
Fax: 44 (0) 121 766 6875
Website: www.v-and-g.co.uk

TITLE: STANDARD ARRANGEMENT DRAWINGS OF STEEL PEDESTRIAN PARAPET SYSTEM - 1400mm HIGH.
DRAWING NUMBER: VGSP - 10.



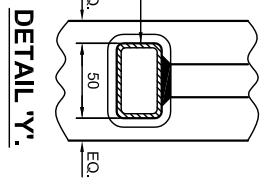
TYPICAL ELEVATION ON PARAPET.

POSTS TO BE AT THE HIGH POINT OF ANY RAKING/SLOPING PANELS.



SECTION E-E.

TOP RAIL AND BOTTOM RAIL TO HAVE A MINIMUM 10mm diameter central hole with all the infill sections.



SECTION G-G.

GENERAL NOTES.

- ALL STEEL WELDING TO BE IN ACCORDANCE WITH BS.EN.1011-1 and 2.
- WELDERS AND WELDING PROCEDURES ARE IN ACCORDANCE WITH BS.EN.ISO.9806-1 AND BS.EN.ISO.15607.
- PANELS CANNOT BE RADIOUS TO SUIT ON SITE. TIGHTER RADI CAN BE SUPPLIED PERFORMED BY SPECIAL ARRANGEMENT.
- DIMENSIONS RELATIVE TO HEIGHT DATUM ASSUME THERE IS NO LONGITUDINAL FALL ON THE PLINTH, ADDITIONAL TOLERANCES TO TAKE ACCOUNT OF THESE FALLS ARE PERMISSIBLE.
- AN EASILY LEGIBLE IDENTIFICATION PLATE SHALL BE APPLIED AND LOCATED NEAR TO THE TOP OF THE FIRST POST AT EACH APPROACH END IN AN EASILY VISIBLE POSITION.

M16 HOLDING DOWN SETSCREWS / BOLTS TO HAVE A MINIMUM ENGAGEMENT OF 20mm WITH V&G ANCHORAGES. ANCHORAGE SUPPLIER TO CONFIRM MINIMUM ENGAGEMENT.

M16 STAINLESS STEEL FLAT WASHER FORM 'C' UNDER THE BOLT HEAD.

M16 NYLON TOP HAT WASHER BETWEEN THE STAINLESS STEEL WASHER AND THE GALVANISED WASHER.

M20 GALVANISED STEEL FLAT WASHER FORM 'E' BETWEEN THE NYLON WASHER AND THE BASEPLATE.

BEDDING GROUT MUST BE A NON-SHRINK CEMENTITIOUS PRODUCT WITH A MINIMUM COMPRESSIVE STRENGTH OF 50N/mm².

ENLARGED VIEW ON HOLDING DOWN BOLT ARRANGEMENT.

SECTION A-A.

SECTION B-B.

