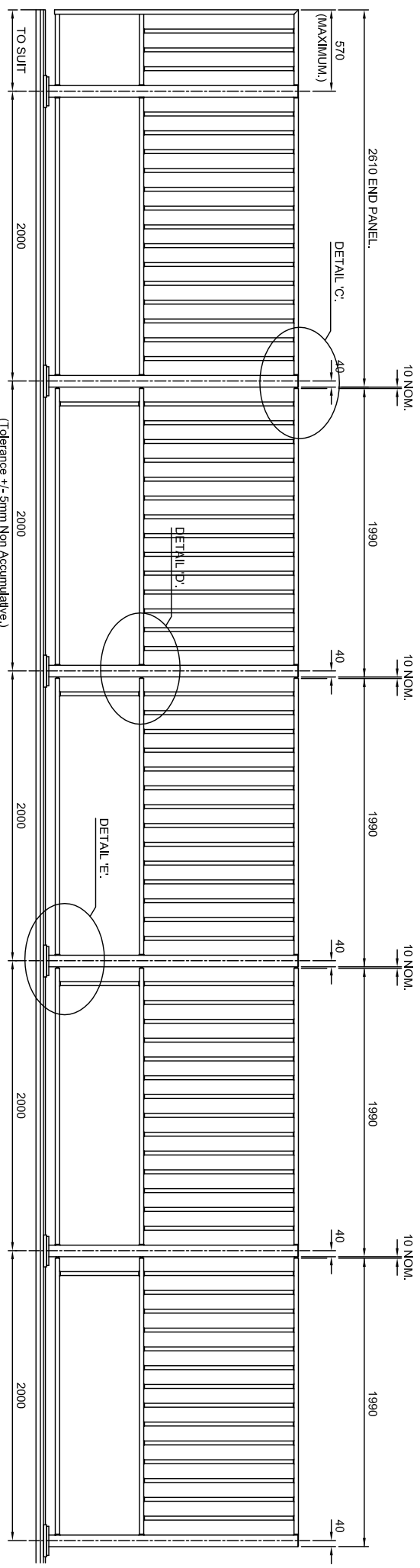
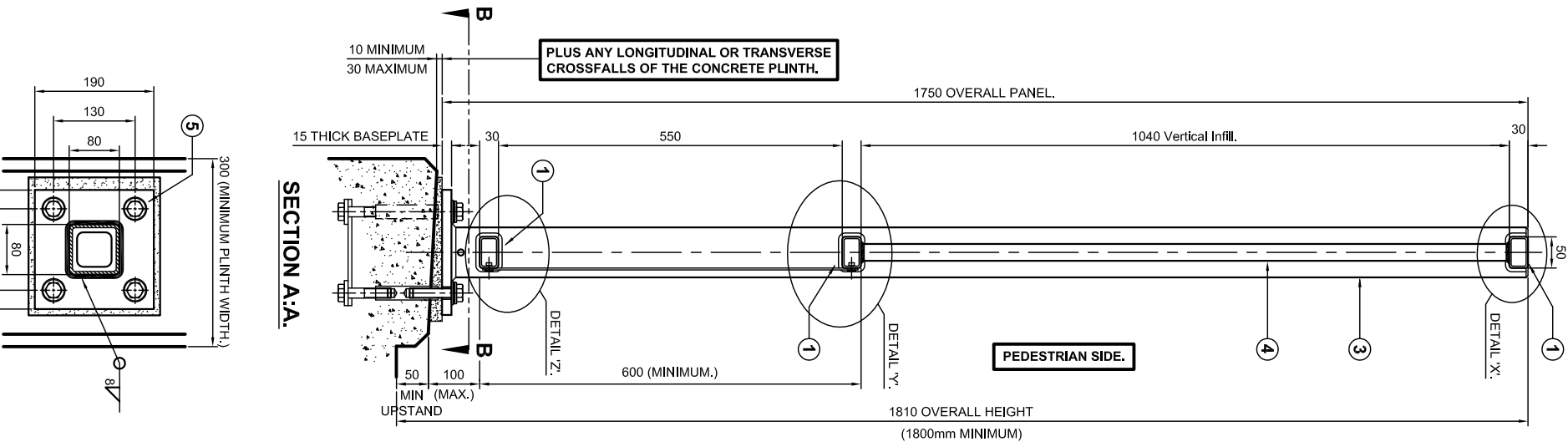


TYPICAL PARAPET ELEVATION WITH SHEETING.



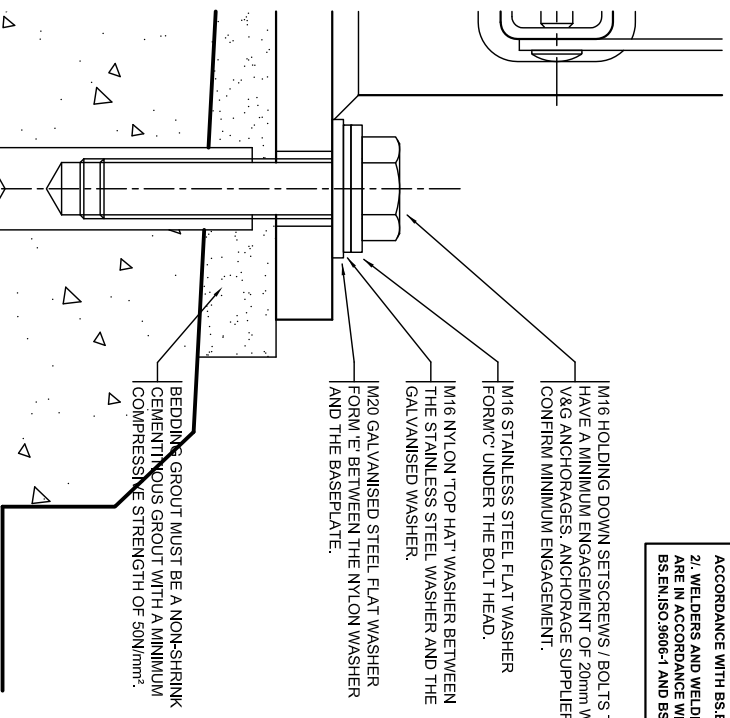
TYPICAL PARAPET ELEVATION WITHOUT SHEETING.

PLUS ANY LONGITUDINAL OR TRANSVERSE CROSSFALLS OF THE CONCRETE PLINTH.



SECTION A.A.

SECTION B.B.



ENLARGED VIEW ON HOLDING DOWN BOLT ARRANGEMENT.

- GENERAL NOTES.**
- 1/ ALL STEEL WELDING TO BE IN ACCORDANCE WITH BS EN 10114 and 2.
 - 2/ WELDERS AND WELDING PROCEDURES ARE IN ACCORDANCE WITH BS EN ISO 9800-1 AND BS EN ISO 15607.
 - 3/ PANELS CANNOT BE RAISED TO SUIT ON SITE. TIGHTER RADI CAN BE SUPPLIED PREFORMED BY SPECIAL ARRANGEMENT.
 - 4/ DIMENSIONS RELATIVE TO HEIGHT DATUM ASSUME THERE IS NO LONGITUDINAL FALL ON THE PLINTH. ADDITIONAL TOLERANCES TO TAKE ACCOUNT OF THESE FALLS ARE PERMISSIBLE.
 - 5/ AN EASILY LEGIBLE IDENTIFICATION PLATE SHALL BE APPLIED AND LOCATED NEAR TO THE TOP OF THE FIRST POST AT EACH APPROACH END IN AN EASILY VISIBLE POSITION.

MATERIAL SPECIFICATION.

ITEM	SPECIFICATION	ITEM	SPECIFICATION
TOP RAIL.	POST, TOP RAIL, INTER RAILS AND VERTICAL INFILLS IN ACCORDANCE WITH BS EN 10219-1, BS EN 10219-2	ALL BOLTS / SETSCREWS TO CONFORM TO BS 3692 AND BE STAINLESS STEEL TO BS EN ISO 3506-1 GRADE A4/80.	
TOP JOINT.	INTER RAIL JOINT.	RIVETS TO BE STAINLESS STEEL REF: MGL-P-UB-4 OR EQUIVALENT.	
INTER RAIL JOINT.	INTER RAIL JOINT.	STAINLESS STEEL WASHERS TO BE M16 FORM 'C' IN ACCORDANCE WITH BS EN 10025-1, BS EN 10025-2	
INTER RAIL.	BASEPLATE.	PLAIN WASHERS.	
BASEPLATE.	VERTICAL INFILL.	STAINLESS STEEL WASHERS TO BE M16 FORM 'C' IN ACCORDANCE WITH BS EN 10025-1, BS EN 10025-2	
INFILL PLATE.		CONFORMING TO BS EN 10025-1, BS EN 10025-2	

PEDESTRIAN PARAPET INFORMATION

UNFACTORED MOMENT OF RESISTANCE OF POST (kNm) AT UNDERSIDE OF BASEPLATE.	11.3kNm
SHEAR FORCE RESISTANCE OF POST (kN)	121kN
SIZE OF HOLDING DOWN BOLTS	M16

PEDESTRIAN PARAPET PERFORMANCE.

POST AND RAIL.	CLASS 'D'.
INFILLSHEET.	CLASS '1'.
POST AND RAIL.	CLASS '3'.
INFILLSHEET.	CLASS 'C'.

APPROVED ANCHORAGE UNITS

DRAWING NUMBER: VGAS/7.
OR OTHER APPROPRIATELY APPROVED CAST-IN OR DRILLED ANCHORAGE SYSTEM.

SECTION SCHEDULE

NO.	DESCRIPTION	DATE	BY	CHECKED
1	TOP AND INTERMEDIATE RAIL SECTION.	06/09/2014		
2	TOP RAIL JOINT SECTION.			
3	POST SECTION.			
4	VERTICAL INFILL SECTION.			
5	BASEPLATE SECTION.			

MANUFACTURING TOLERANCES.

TOLERANCES AS SHOWN UNLESS STATED OTHERWISE.	
DIMENSIONS GREATER THAN 1000mm.	+ 2mm
LESS THAN 1000mm.	+ 1mm
ANGULAR DIMENSIONS.	+ 0°15'

NOTE: ALL ACCUMULATIVE TOLERANCES ARE TO BE CONTAINED WITHIN THE OVERALL TOLERANCE.

SITE ERECTION TOLERANCES.

WILL VARY TO SUIT SITE CONDITIONS.

ALL STANDARDS QUOTED ARE DEEMED CURRENT AT THE DATE THE DRAWING IS ISSUED FOR APPROVAL, UNLESS OTHERWISE STATED.

THIS DRAWING TO BE USED ONLY WITH W/O No. DRAWING TO BE RETURNED TO DRAWING OFFICE ON COMPLETION OF WORK.

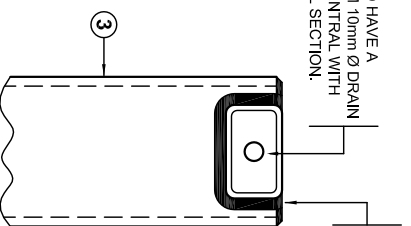
Varley and Gulliver Ltd.
Alfred Street, Sparkbrook, Birmingham B12 8JR
Tel: 44 (0) 121 773 2441
Fax: 44 (0) 121 766 6875
Website: www.v-and-g.co.uk

TITLE: STANDARD ARRANGEMENT DRAWINGS OF STEEL PEDESTRIAN PARAPET BRIDLEWAY SYSTEM - 1800mm HIGH. (SHEET 1 OF 2.)

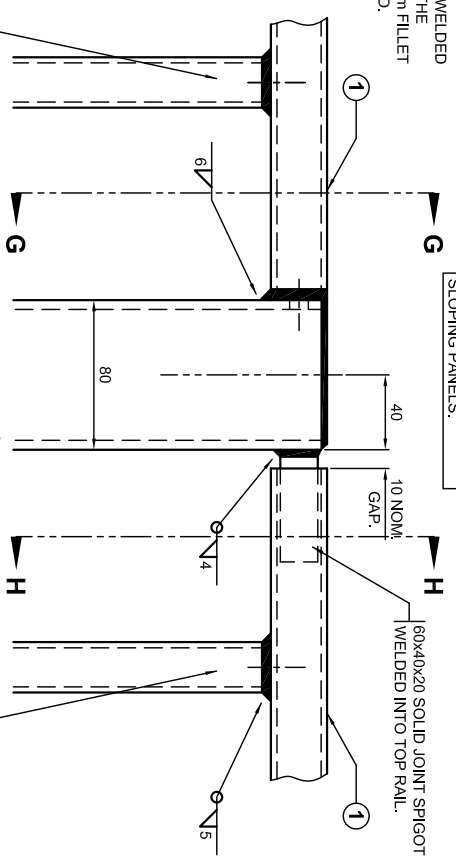
DRAWING NUMBER: VGSP - 08.

ALTERNATIVE END PANEL.
(WITHOUT OVERHANG.)

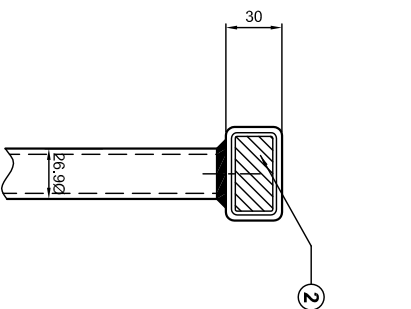
POSTS TO BE AT THE HIGH POINT OF ANY RAKING / SLOPING PANELS.



SECTION G-G.



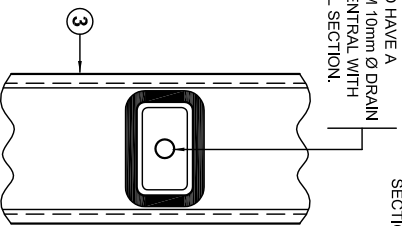
DETAIL C'.



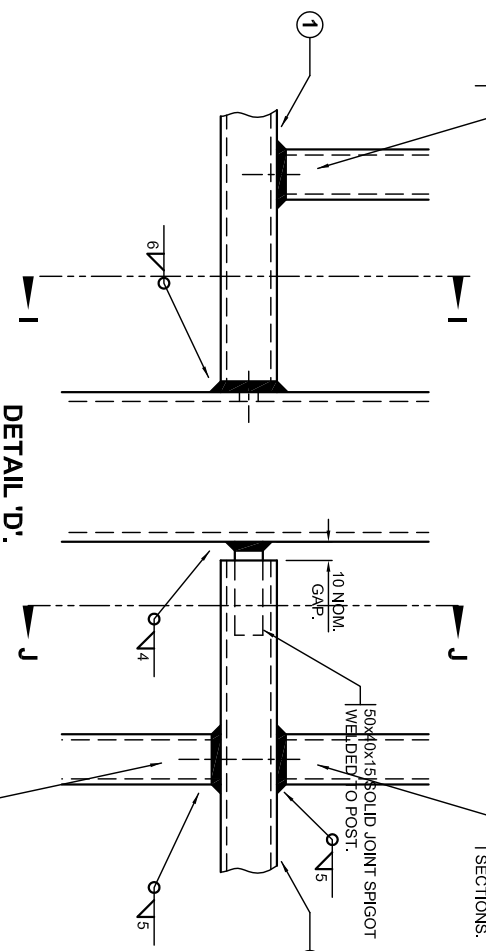
SECTION H-H.

TOP RAIL AND INTER RAILS TO HAVE A MINIMUM 10mm Ø DRAIN HOLE CENTRAL WITH ALL THE INFILL SECTIONS.

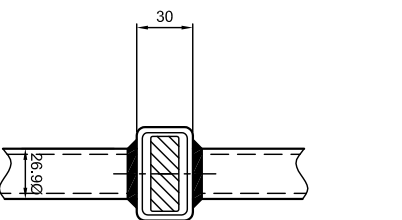
TOP RAIL AND INTER RAILS TO HAVE A MINIMUM 10mm Ø DRAIN HOLE CENTRAL WITH ALL THE INFILL SECTIONS.



SECTION I-I.



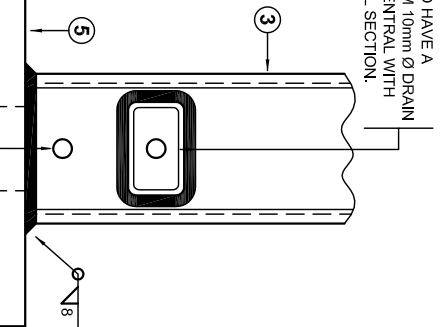
DETAIL D'.



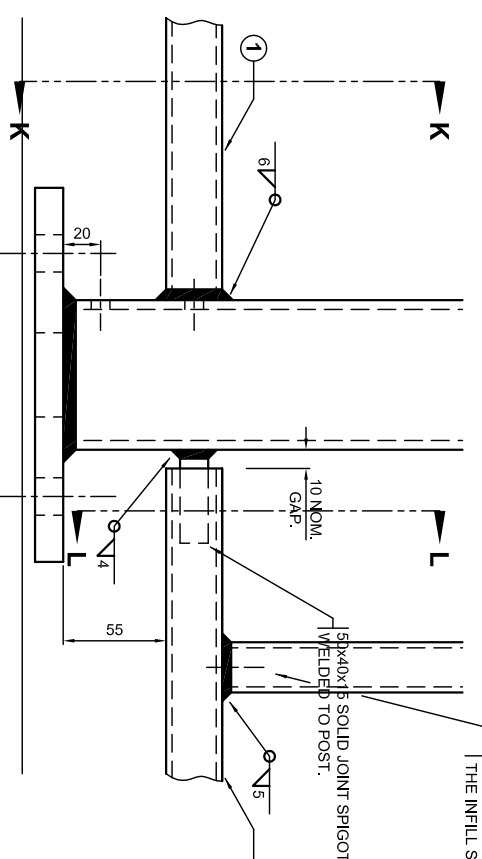
SECTION J-J.

INTER RAIL AND BOTTOM RAIL TO HAVE A MINIMUM 10mm Ø DRAIN HOLE CENTRAL WITH ALL THE INFILL SECTIONS.

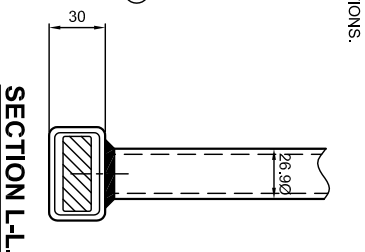
POST TO HAVE A MINIMUM 10mm Ø DRAIN HOLE CENTRAL WITH THE RAIL SECTION.



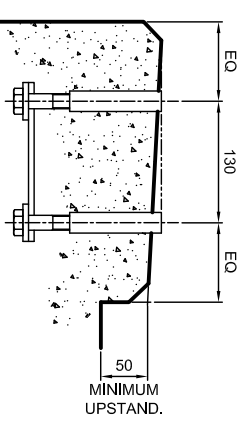
SECTION K-K.



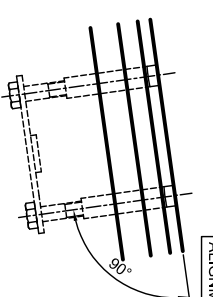
DETAIL E'.



SECTION L-L.

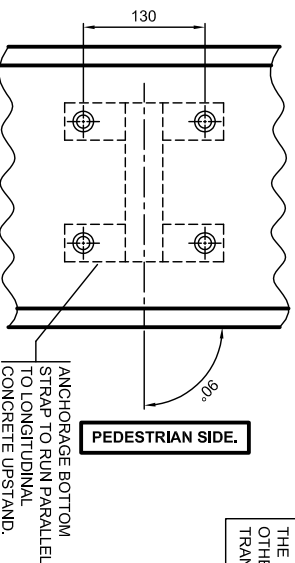


SECTION THROUGH PLINTH.



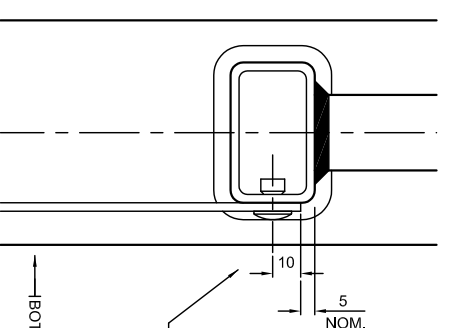
FRONT VIEW.

THE CONCRETE PLINTH IS TO BE DESIGNED BY OTHERS TO RESIST WITHOUT DAMAGE THE FORCES TRANSMITTED BY THE PARAPET UNDER LOAD.

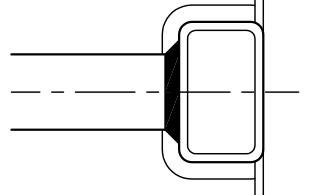


PLAN VIEW.

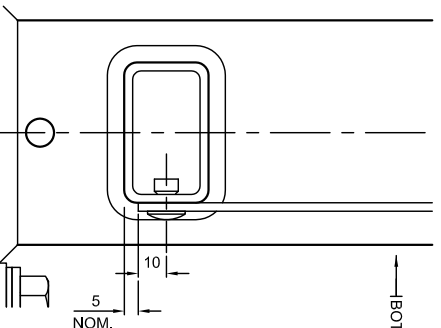
ANCHORAGE DETAILS.



DETAIL Y'.



DETAIL X'.



DETAIL Z'.

ANCHORAGES TO BE ALIGNED PERPENDICULAR TO THE LONGITUDINAL ALIGNMENT OF THE CONCRETE PLINTH.

Rev	Date	By	Description

Rev	Date	By	Description

MANUFACTURING TOLERANCES.	
TOLERANCES AS SHOWN UNLESS STATED OTHERWISE.	
DIMENSIONS.	TOLERANCES.
GREATER THAN 1000mm.	+ 2mm
LESS THAN 1000mm.	+ 1mm
ANGULAR DIMENSIONS.	+ 0°15'

SECTION SCHEDULE	
1	TOP AND INTERMEDIATE RAIL SECTION.
2	TOP AND INTERMEDIATE RAIL JOINT SECTION.
3	POST SECTION.
4	VERTICAL INFILL SECTION.
5	BASEPLATE SECTION.

NOTE: ALL ACCUMULATIVE TOLERANCES ARE TO BE CONTAINED WITHIN THE OVERALL TOLERANCE.	

SITE ERECTION TOLERANCES.	

ALL STANDARDS QUOTED ARE DEEMED CURRENT AT THE DATE THE DRAWING IS ISSUED FOR APPROVAL, UNLESS OTHERWISE STATED.	

W/O No.	

SCALE: P.G.H. / D.V.C. / 06/09/2014

Varley and Gulliver Ltd.
 Alfred Street, Sparkbrook, Birmingham B12 8JR
 Tel: 44 (0) 121 773 2441
 Fax: 44 (0) 121 766 6875
 Website: www.v-and-g.co.uk

TITLE: STANDARD ARRANGEMENT DRAWINGS OF STEEL PEDESTRIAN PARAPET BRIDLEWAY SYSTEM - 1800mm HIGH. (SHEET 2 OF 2.)
 DRAWING NUMBER: VGSP - 08.