

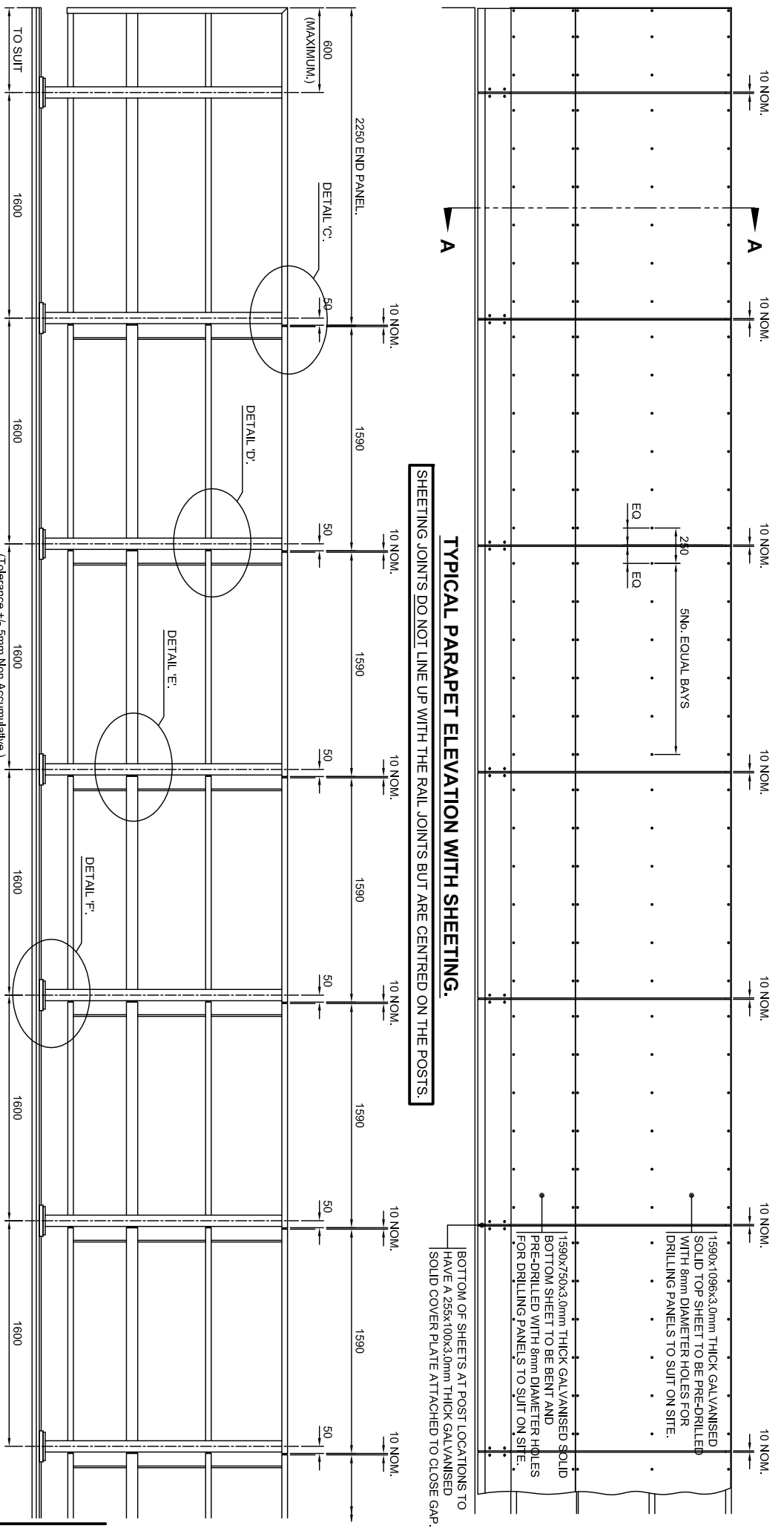
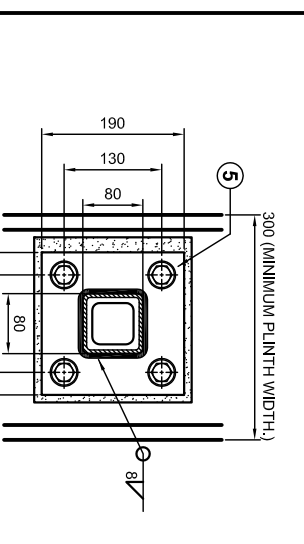
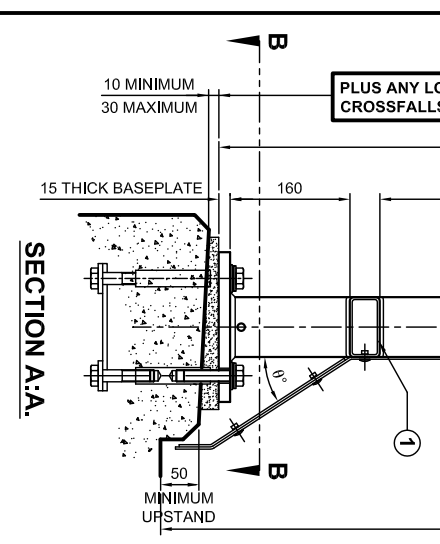
TYPICAL PARAPET ELEVATION WITH SHEETING.

SHEETING JOINTS DO NOT LINE UP WITH THE RAIL JOINTS BUT ARE CENTRED ON THE POSTS.

ALTERNATIVE END PANEL.
(WITHOUT OVERHANG.)

TYPICAL PARAPET ELEVATION WITHOUT SHEETING.

- GENERAL NOTES:**
- ALL STEEL WELDING TO BE IN ACCORDANCE WITH BS EN 1011-1 AND 2.
 - WELDERS AND WELDING PROCEDURES ARE IN ACCORDANCE WITH BS EN ISO 9606-1 AND BS EN ISO 15607.
 - PANELS CANNOT BE RADIUS TO SUIT. TIGHTER RADIUS CAN BE SUPPLIED PERFORMED BY SPECIAL ARRANGEMENT.
 - DIMENSIONS RELATIVE TO HEIGHT DATUM ASSUME THERE IS NO LONGITUDINAL FALL ON THE PLINTH. ADDITIONAL TOLERANCES TO TAKE ACCOUNT OF THESE FALLS ARE PERMISSIBLE.
 - AN EASILY LEGIBLE IDENTIFICATION PLATE SHALL BE APPLIED AND LOCATED NEAR TO THE TOP OF THE FIRST POST AT EACH APPROACH END IN AN EASILY VISIBLE POSITION.



- ENLARGED VIEW ON HOLDING DOWN BOLT ARRANGEMENT.**
- M16 HOLDING DOWN SETSCREWS / BOLTS TO HAVE A MINIMUM ENGAGEMENT OF 20mm WITH VAG ANCHORAGES. ANCHORAGE SUPPLIER TO CONFIRM MINIMUM ENGAGEMENT.
 - M16 STAINLESS STEEL FLAT WASHER FORM 'C' UNDER THE BOLT HEAD.
 - M16 NYLON TOP HAT WASHER BETWEEN THE STAINLESS STEEL WASHER AND THE GALVANISED WASHER.
 - M20 GALVANISED STEEL FLAT WASHER FORM 'C' BETWEEN THE NYLON WASHER AND THE BASEPLATE.
 - BEDDING GROUT MUST BE A NON-SHINK CEMENTITIOUS GROUT WITH A MINIMUM COMPRESSIVE STRENGTH OF 50N/mm².
 - 7 Nom. Gap

PEDESTRIAN PARAPET INFORMATION

UNFACTORED MOMENT OF RESISTANCE OF POST (kNm) AT UNDERSIDE OF BASEPLATE	11.3kNm
SHEAR FORCE RESISTANCE OF POST (kN)	121kN
SIZE OF HOLDING DOWN BOLTS	M16

PEDESTRIAN PARAPET PERFORMANCE:

POST AND RAIL	Eurocode 3 BS EN 1993-1-1:2005
INFILLSHEET	CLASS 'E'
POST AND RAIL	BS 7818:1995
INFILLSHEET	CLASS 'C'

MATERIAL SPECIFICATION

ITEM	SPECIFICATION	ITEM	SPECIFICATION
TOP RAIL	POST, TOP RAIL AND INTER RAILS IN ACCORDANCE WITH BS EN 10219-1, BS EN 10219-2	BOLTS	ALL BOLTS / SCREWS TO CONFORM TO BS 3692 AND BE STAINLESS STEEL TO BS EN ISO 3506-1, GRADE A4-80.
POST SECTION	BS EN 10219-1, BS EN 10219-2	RIVETS	RIVETS TO BE STAINLESS STEEL REF: M6-R-UB-6 OR EQUIVALENT.
INTER RAIL JOINT	JOINTS AND SOLID INFILL IN BS EN 10025-1, BS EN 10025-2	PLAIN WASHERS	WASHERS TO BE M6 FORM 'C' AND M16 FORM 'C' CONFORMING TO BS 4320 AND BE STAINLESS STEEL TO BS EN ISO 3506 GRADE A4 OR A2.
INTER RAIL	INFILL IN BS EN 10025-1, BS EN 10025-2		
BASEPLATE	INFILL IN BS EN 10025-1, BS EN 10025-2		
INFILL PLATE	INFILL IN BS EN 10025-1, BS EN 10025-2		

SECTION SCHEDULE

NO.	SECTION	DESCRIPTION
1	TOP AND INTERMEDIATE RAIL SECTION	
2	TOP AND INTERMEDIATE RAIL JOINT SECTION	
3	POST SECTION	
4	ELECTRICAL LUG SECTION	
5	BASEPLATE SECTION	

APPROVED ANCHORAGE UNITS

DRAWING NUMBER: VGAS7

OR OTHER APPROVED APPROVED CAST-IN OR DRILLED ANCHORAGE SYSTEM.

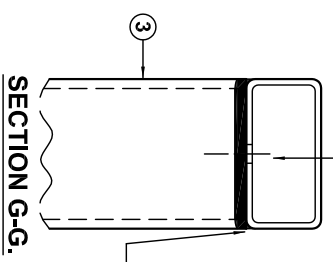
W/O No.
DRAWING TO BE RETURNED TO DRAWING OFFICE ON COMPLETION OF WORK

Varley and Gulliver Ltd.
Alfred Street, Sparkbrook, Birmingham B12 8JR
Tel: 44 (0) 121 773 2441
Fax: 44 (0) 121 766 6875
Website: www.v-and-g.co.uk

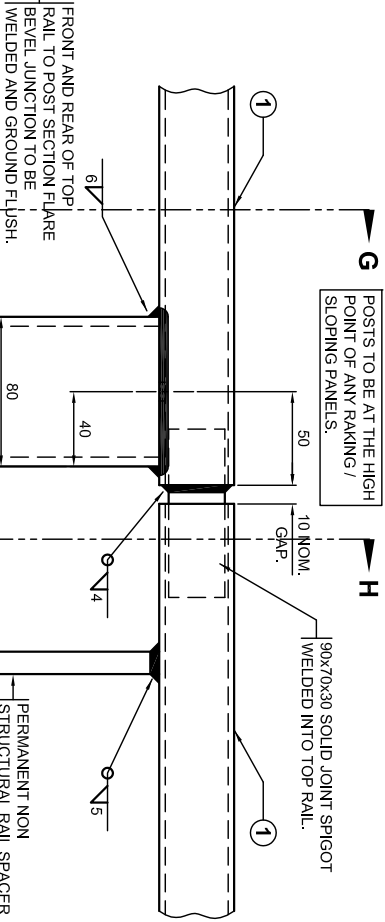
TITLE
STANDARD ARRANGEMENT DRAWINGS OF STEEL PEDESTRIAN PARAPET RAILWAY SYSTEM - 1800mm HIGH (SHEET 1 OF 2)

DRAWING NUMBER
VGSP - 04.

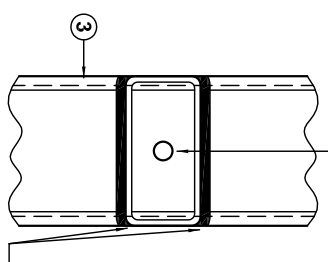
TOP RAIL TO HAVE A 10mm DIAMETER DRAIN HOLE CENTRAL WITH THE POST SECTION.



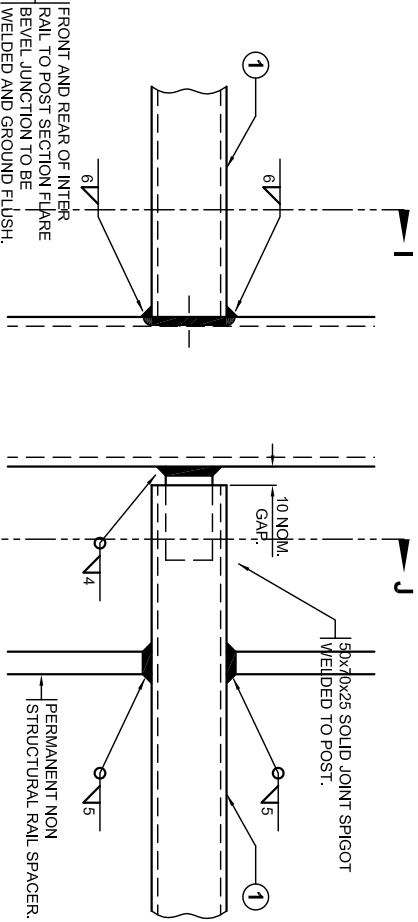
SECTION G-G.



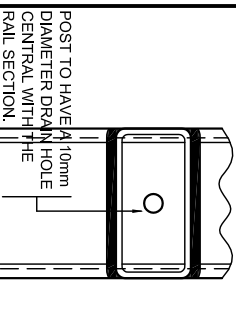
DETAIL C'.



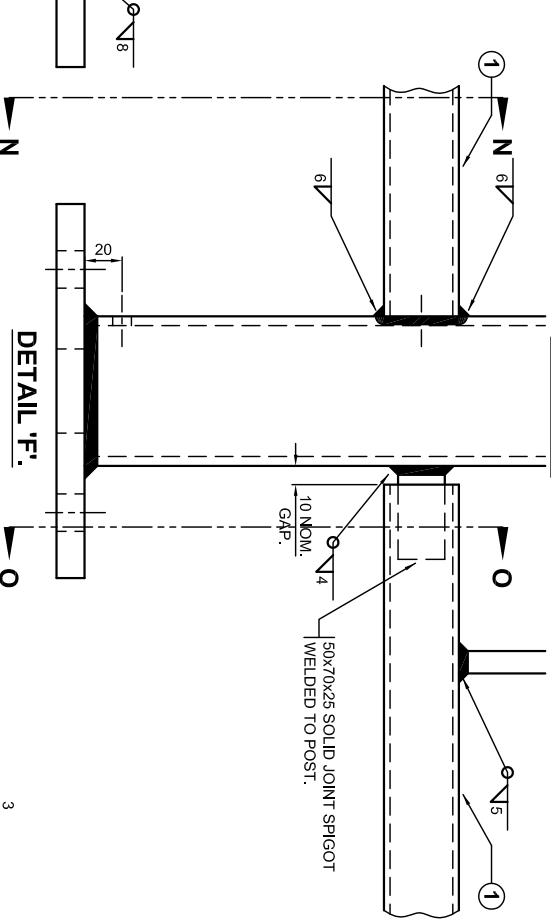
SECTION I-I.



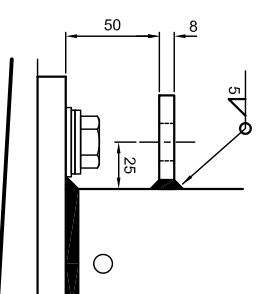
DETAIL D'.



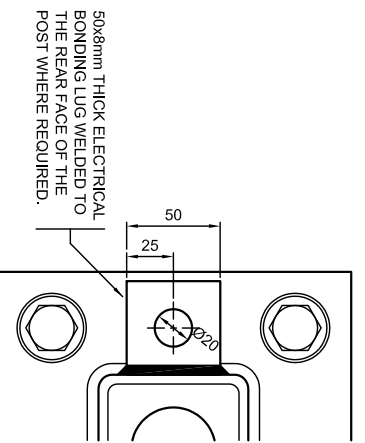
SECTION N-N.



DETAIL F'.

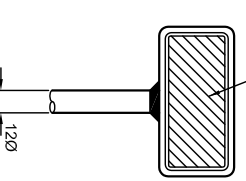


ELECTRICAL BONDING LUGS. (IF REQUIRED.)

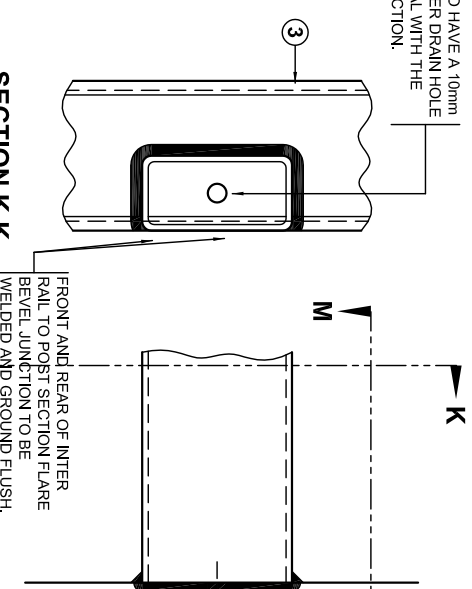


PLAN VIEW ON EBL.

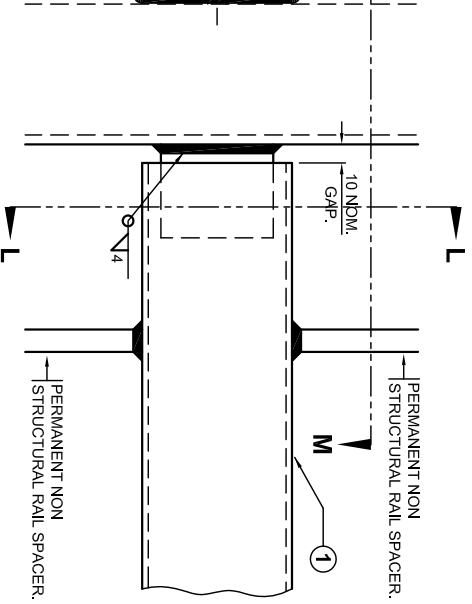
POST TO HAVE A 10mm DIAMETER DRAIN HOLE CENTRAL WITH THE RAIL SECTION.



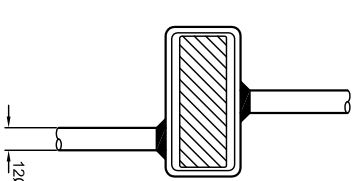
SECTION H-H.



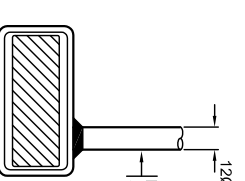
SECTION K-K.



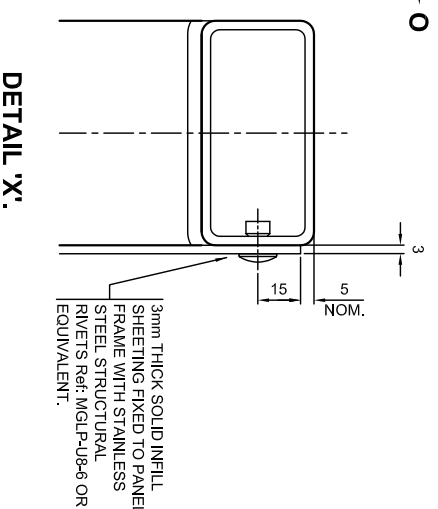
DETAIL E'.



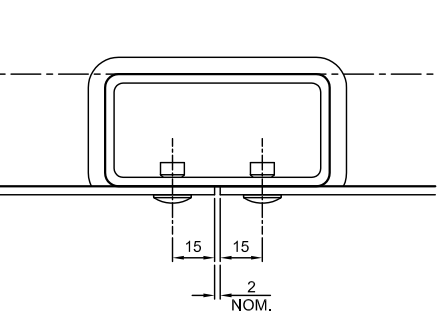
SECTION J-J.



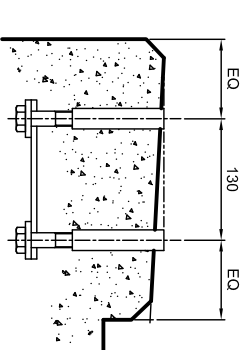
SECTION O-O.



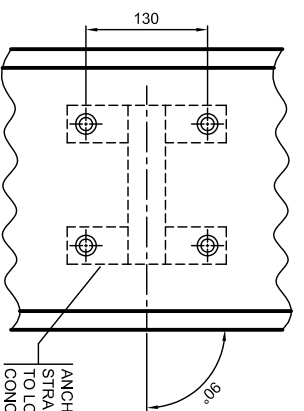
DETAIL X'.



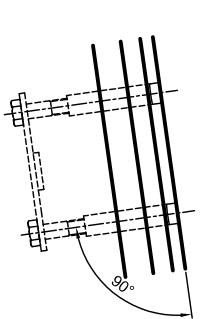
DETAIL Y'.



SECTION THROUGH PLINTH.



ANCHORAGE DETAILS.



FRONT VIEW.

THE CONCRETE PLINTH IS TO BE DESIGNED BY OTHERS TO RESIST WITHOUT DAMAGE THE FORCES TRANSMITTED

SECTION SCHEDULE		Rev	Date	Description
1	TOP AND INTERMEDIATE RAIL SECTION.	MANUFACTURING TOLERANCES.		
2	TOP AND INTERMEDIATE RAIL JOINT SECTION.	TOLERANCES AS SHOWN UNLESS STATED OTHERWISE.		
3	POST SECTION.	DIMENSIONS: TOLERANCES: GREATER THAN + 2mm		
4	ELECTRICAL LUG SECTION.	LESS THAN - 1mm		
5	BASEPLATE SECTION.	ANGULAR DIMENSIONS: + 0°15'		
SCALE		NOTE: ALL ACCUMULATIVE TOLERANCES ARE TO BE CONTAINED WITHIN THE OVERALL TOLERANCE.		
DRN: P.G.H. CHK: D.V.C. DATE: 06/09/2014		SITE ERECTION TOLERANCES.		
W/O No.		WILL VARY TO SUIT SITE CONDITIONS.		
THIS DRAWING TO BE USED ONLY WITH DRAWING ON COMPLETION OF WORK OFFICE ON COMPLETION OF WORK		ALL STANDARDS QUOTED ARE DEEMED CURRENT AT THE DATE THE DRAWING IS ISSUED FOR APPROVAL, UNLESS OTHERWISE STATED.		

Varley and Gulliver Ltd.
 Alfred Street, Sparkbrook, Birmingham B12 8JR
 Tel: 44 (0) 121 773 2441
 Fax: 44 (0) 121 766 6875
 Website: www.v-and-g.co.uk

TITLE	DRAWING NUMBER
STANDARD ARRANGEMENT DRAWINGS OF STEEL PEDESTRIAN PARAPET RAILWAY SYSTEM - 1800mm HIGH (SHEET 2 OF 2.)	VGSP - 04.