

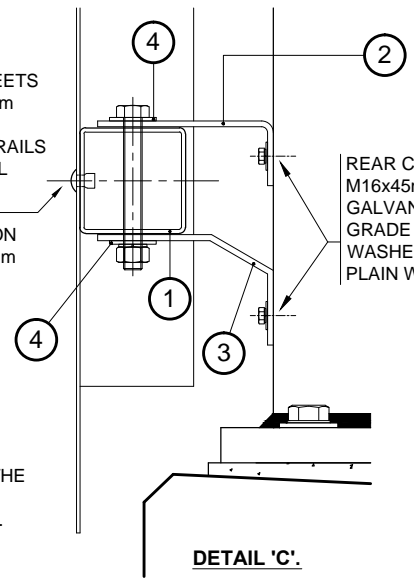
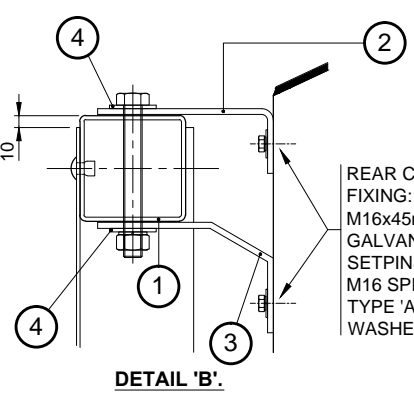
- NOTES:**
- FOR DETAILS OF PARAPETS REFER TO DRAWING NUMBER VGSH 4000-02; VGSH 4000-03 AND VGSH 4000-04.
 - BLOCKING PLATES TYPE 1 AND 2 AS DETAILED ON DRAWING NUMBERS VGSH 4000-CD/45 AND 46.
 - THE POSITION AND EXTENT OF ANTI-ACCESS PANELS SHALL BE IN ACCORDANCE WITH THE ROAD AUTHORITIES REQUIREMENTS.
 - ANTI-ACCESS PANELS TO BE 3.0mm THICK STEEL GRADE S275 HOT DIPPED GALVANISED TO BS.EN.ISO.1461. ADDITIONAL FINISHES TO PRODUCE A NON-REFLECTIVE SURFACE CAN BE PROVIDED.
- ANTI-ACCESS BLOCKING PLATES TYPE 1 AND TYPE 2 ARE **ONLY** TO BE LOCATED AT ONE END OF EACH ANTI ACCESS PANEL FURTHEST FROM THE RAILWAY LINE.
- 3mm THICK ANTI-ACCESS PANELS ARE TO BE CUT TO SIZE, DRILLED AND BENT (IF REQUIRED) PRIOR TO GALVANISING AND DELIVERY TO SITE.
- WHEN VERTICAL CURVES ARE ENCOUNTERED THE MAXIMUM ALLOWABLE GAP BETWEEN INFILL SHEETS SHALL BE 3.0mm.
- PANEL LENGTHS TO SUIT POST AND JOINT CENTRES AND AVAILABLE SHEET SIZES.

TOP OF SHEET TO BE SET A NOMINAL 10mm DOWN FROM THE TOP OF THE RAIL.

REAR CLEAT TO REAR RAIL FIXING:
M16x130mm LONG GALVANISED STEEL BOLTS GRADE 8.8 c/w 1No. M16 HEX. NUT GRADE 8 AND 1No. M16 SPRING WASHER TYPE 'A' (2No. PER REAR RAIL CONNECTION).

3.0mm THICK SOLID INFILL SHEETS TO BE PRE-DRILLED WITH 12mm DIAMETER HOLES PRIOR TO GALVANISING FOR FIXING TO RAILS WITH 10.0mm DIAMETER AVDEL STEEL MONOBOLTS ref: 02771-01228 OR EQUIVALENT. RAIL TO BE DRILLED TO SUIT ON SITE. (10.0mm MINIMUM / 10.4mm MAXIMUM.)

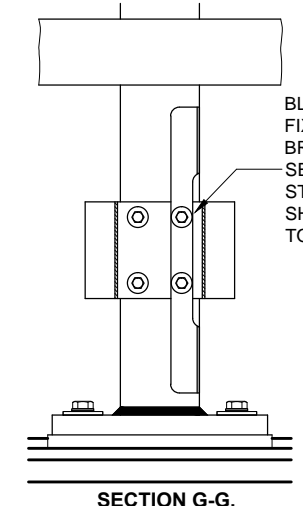
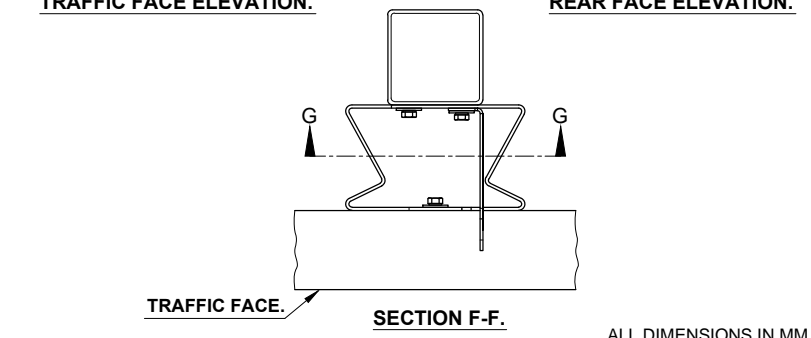
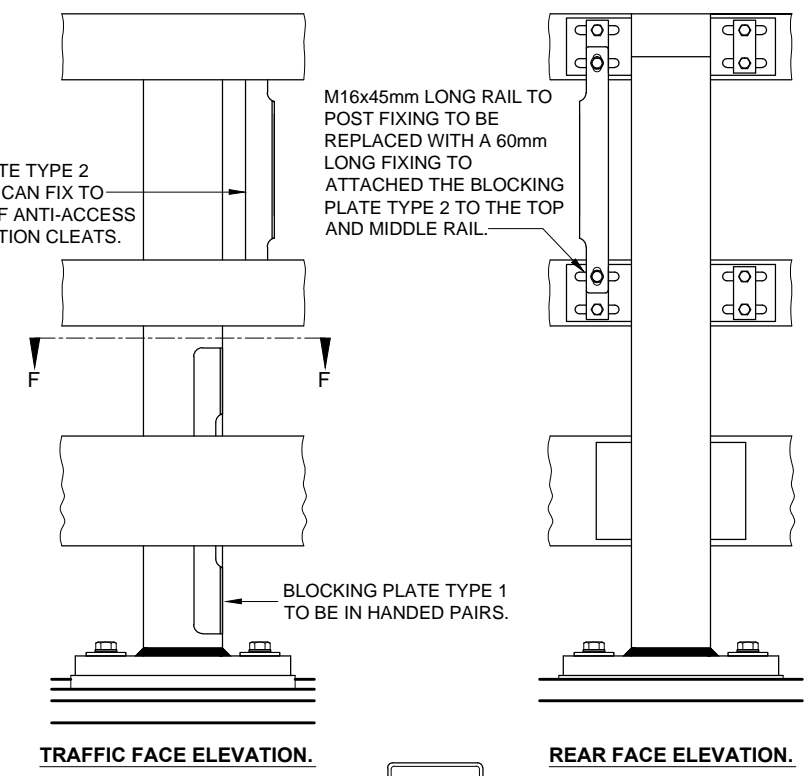
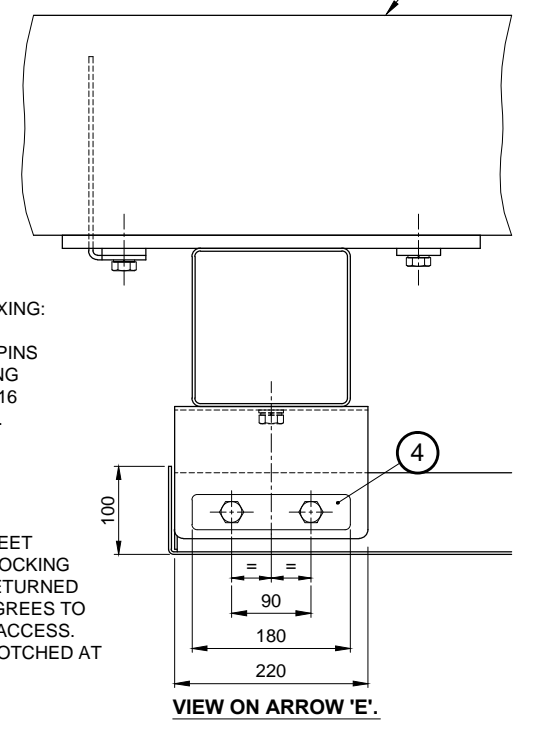
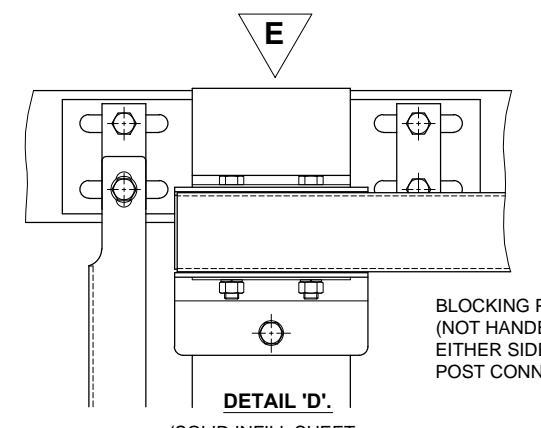
ANTI-ACCESS SHEET END RETURN TO BE NOTCHED AT THE BOTTOM TO AVOID A CLASH WITH THE GROUT AND PLINTH.



REAR CLEAT TO POST FIXING:
M16x45mm LONG GALVANISED STEEL SETPINS GRADE 8.8 c/w M16 SPRING WASHER TYPE 'A' AND M16 PLAIN WASHER FORM 'G'.

REAR CLEAT TO POST FIXING:
M16x45mm LONG GALVANISED STEEL SETPINS GRADE 8.8 c/w M16 SPRING WASHER TYPE 'A' AND M16 PLAIN WASHER FORM 'G'.

ANTI-ACCESS SHEET ADJACENT TO BLOCKING PLATES TO BE RETURNED THROUGH 90 DEGREES TO CLOSE OFF END ACCESS. RETURN TO BE NOTCHED AT THE BOTTOM.



BLOCKING PLATE TYPE 1 TO BE FIXED INSIDE THE COLLAPSIBLE BRACKET WITH EITHER VERTICAL SET OF TWO EXISTING / STANDARD BRACKET FIXINGS AS SHOWN. BOLTS TO BE TIGHTENED TO A TORQUE OF 130Nm.

Rev	Date	By	Description
A	12/16	D.V.C.	Blocking Plates added and minor amendments.

MANUFACTURING TOLERANCES.

DIMENSIONS.	TOLERANCES.
GREATER THAN 1000mm.	± 2mm
LESS THAN 1000mm.	± 1mm
ANGULAR DIMENSIONS.	± 0°15'

SECTION SCHEDULE

SECTION	DESCRIPTION
1	REAR RAIL SECTION 90x90x3.6 RHS.
2	RAIL CLEAT TYPE 1 - 4.0mm FLAT
3	RAIL CLEAT TYPE 2 - 4.0mm FLAT
4	WASHER BAR SECTION 180x40x3.0 FLAT.

NOTE: ALL ACCUMULATIVE TOLERANCES ARE TO BE CONTAINED WITHIN THE OVERALL TOLERANCE.

SITE ERECTION TOLERANCES.

WILL VARY TO SUIT SITE CONDITIONS.

ALL STANDARDS QUOTED ARE DEEMED CURRENT AT THE DATE THE DRAWING IS ISSUED FOR APPROVAL, UNLESS OTHERWISE STATED.

THIS DRAWING TO BE USED ONLY WITH

W/O.No.

DRAWING TO BE RETURNED TO DRAWING OFFICE ON COMPLETION OF WORK

Varley and Gulliver Ltd.
Alfred Street, Sparkbrook, Birmingham B12 8JR
Tel. 44 (0) 121 773 2441
Fax. 44 (0) 121 766 6875
Website. www.v-and-g.co.uk

TITLE STANDARD ARRANGEMENT DRAWINGS OF VGSH 4000 SERIES STEEL PARAPET SYSTEM. ANTI-ACCESS PANEL DETAILS.	DRAWING NUMBER VGSH 4000 - 09.A.
--	-------------------------------------