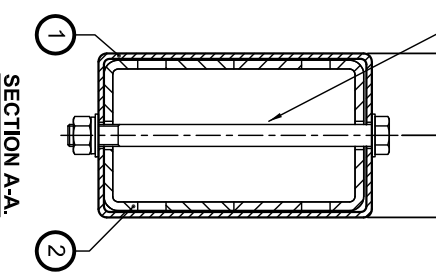
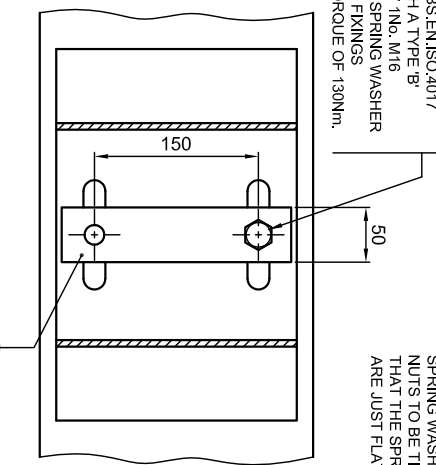
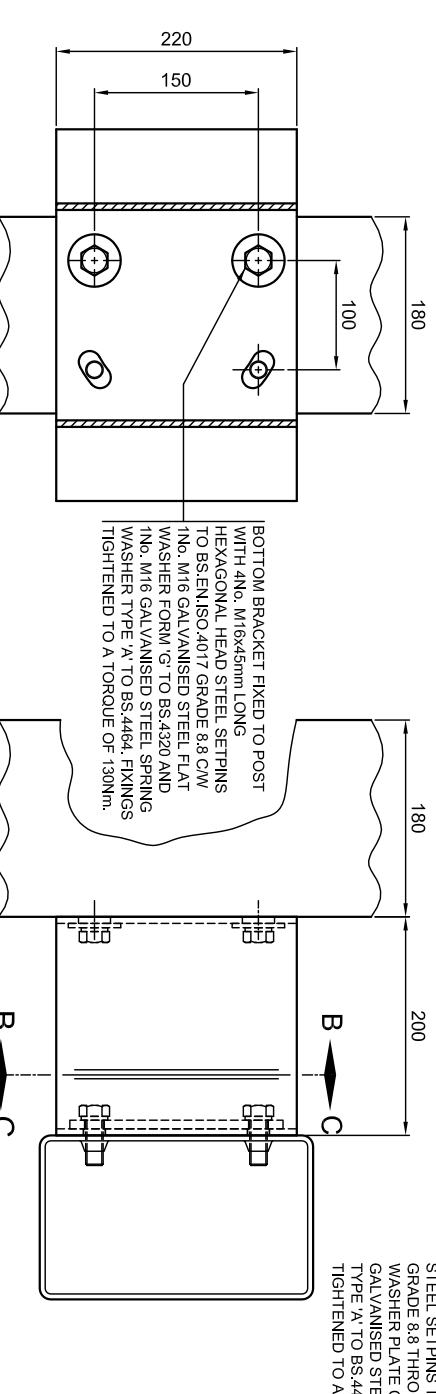
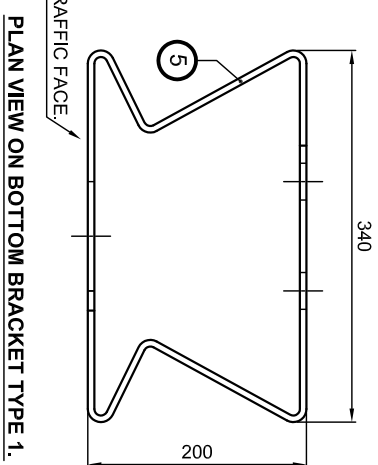
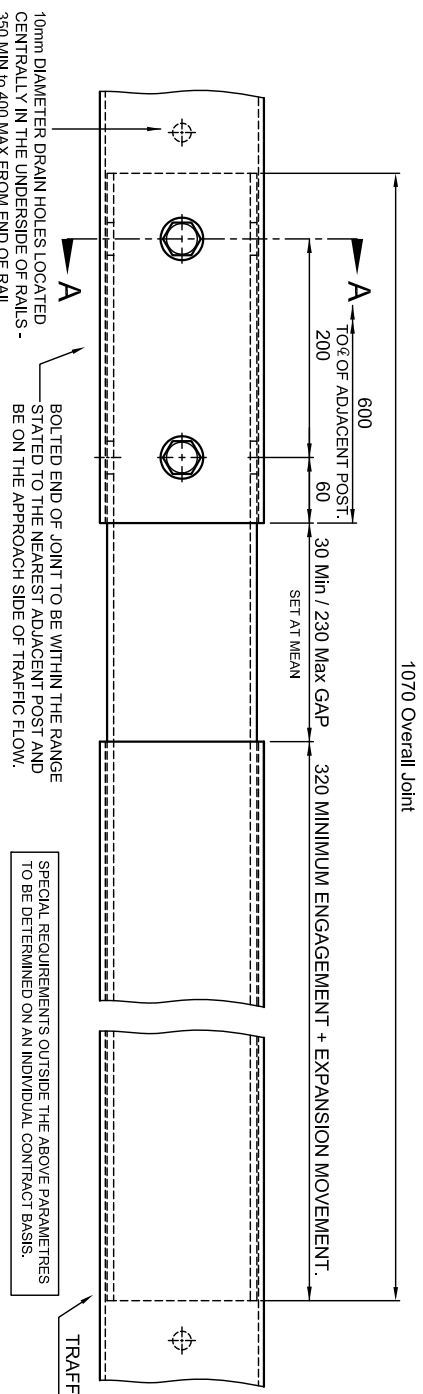
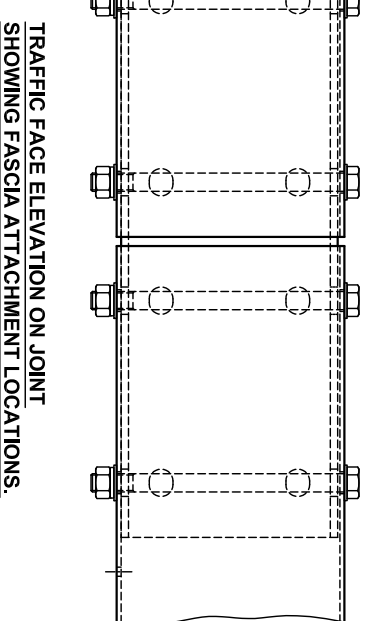
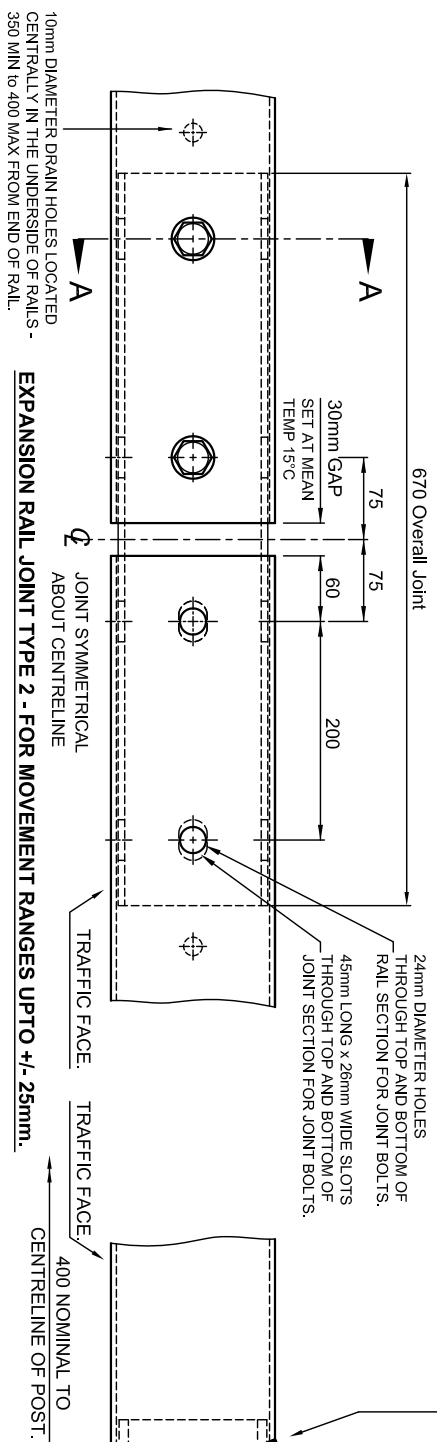
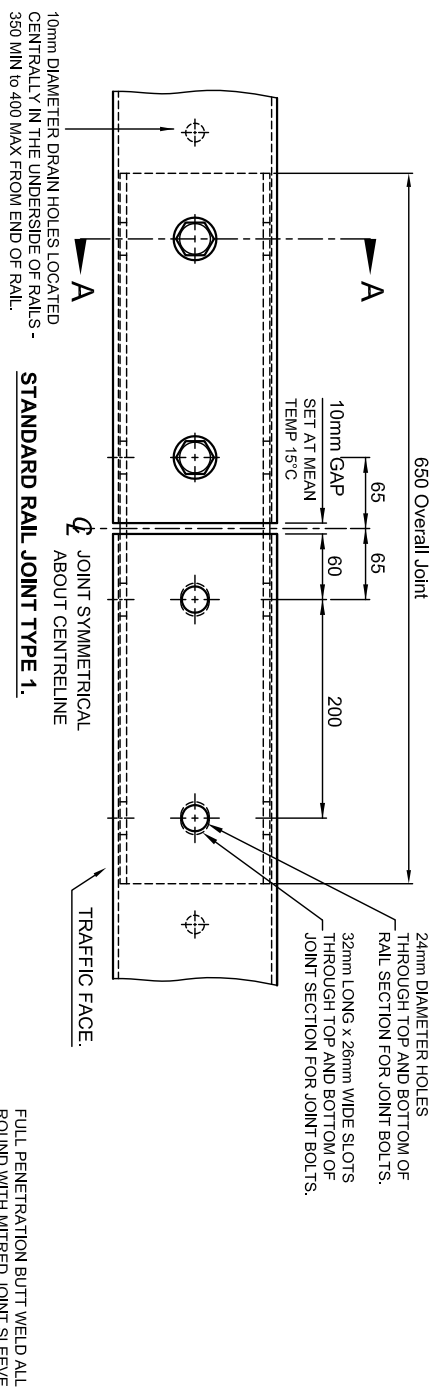


GENERAL NOTES.	
1/	ALL STEEL WELDING TO BE IN ACCORDANCE WITH BS.EN.1011-2.
2/	WELDERS AND WELDING PROCEDURES ARE IN ACCORDANCE WITH BS.EN.287-1 AND BS.EN.ISO.15607 RESPECTIVELY.

MATERIAL SPECIFICATION.			
ITEM	SPECIFICATION	ITEM	SPECIFICATION
RAIL JOINTS.	ALL STEEL SECTIONS ARE TO BE IN ACCORDANCE WITH BS.EN.10025-1 AND BS.EN.10025-2.	BOLTS.	M20 JOINT BOLTS TO GALVANISED STEEL TO CONFORM TO BS.3692 AND BS.EN.ISO.4017 GRADE 8.8. M16 SETPINS TO BE GALVANISED STEEL TO CONFORM TO BS.3692 AND BS.EN.ISO.4014 GRADE 8.8.
POST CLEAT.	RAIL JOINTS TO BE GRADE S355J0. POST CLEATS AND WASHER PLATES TO BE GRADE S275J0.	NUTS.	M20 NUTS TO BE GALVANISED STEEL TO CONFORM TO BS.3692 AND BS.EN.ISO.4032 GRADE 8.
WASHER PLATE.		WASHERS.	GALVANISED PLAIN WASHERS TO BE M20 FORM 'F' AND M16 FORM 'G' CONFORMING TO BS.4320. GALVANISED SPRING WASHERS TO BE TYPE 'A' TO BS.4464.



SECTION SCHEDULE	
1	RAIL SECTION 250x150x5.0 RHS
2	JOINT SECTION 250x150x6.0
3	POST CLEAT 475x130x15 PLATE
4	WASHER PLATE TYPE 'B' - 210x50x8
5	BOTTOM BRACKET TYPE 1, 340x200x11mm PLATE

Rev	Date	By	Description

MANUFACTURING TOLERANCES.	
TOLERANCES AS SHOWN UNLESS STATED OTHERWISE.	
DIMENSIONS GREATER THAN 1000mm.	+ 2mm
LESS THAN 1000mm.	+ 1mm
ANGULAR DIMENSIONS.	+ 0°15'

NOTE: ALL ACCUMULATIVE TOLERANCES ARE TO BE CONTAINED WITHIN THE OVERALL TOLERANCE.

SITE ERECTION TOLERANCES.

WILL VARY TO SUIT SITE CONDITIONS.

ALL STANDARDS QUOTED ARE DEEMED CURRENT AT THE DATE THE DRAWING IS ISSUED FOR APPROVAL, UNLESS OTHERWISE STATED.

THIS DRAWING TO BE USED ONLY WITH W/O No. []

DRAWING TO BE RETURNED TO DRAWING OFFICE ON COMPLETION OF WORK.

Varley and Gulliver Ltd.
 Alfred Street, Sparkbrook, Birmingham B12 8JR
 Tel: 44 (0) 121 773 2441
 Fax: 44 (0) 121 766 6875
 Website: www.v-and-g.co.uk

TITLE	DRAWING NUMBER
STANDARD ARRANGEMENT DRAWINGS OF VGSH 4000 SERIES STEEL PARAPET SYSTEM.	VGSH 4000 - 04.