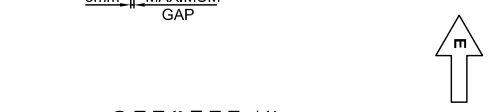
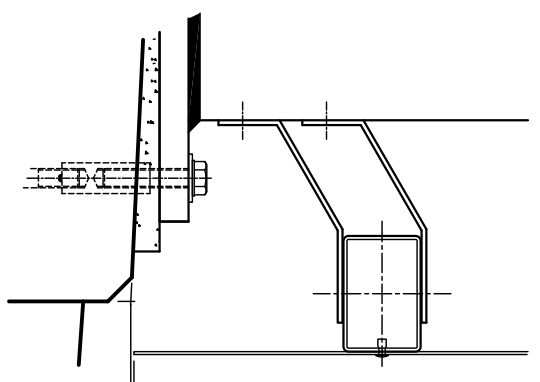
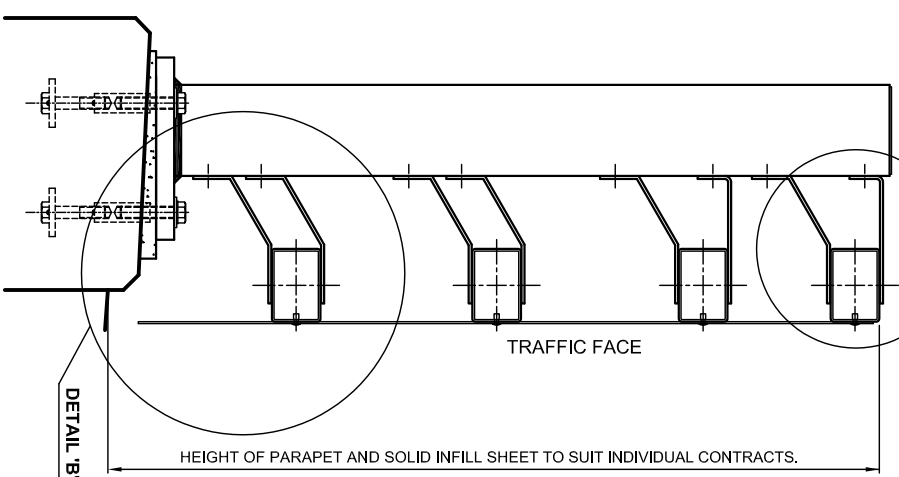
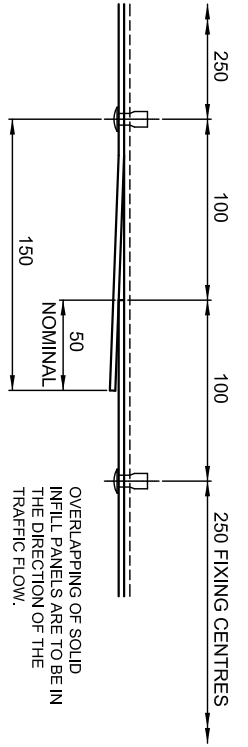
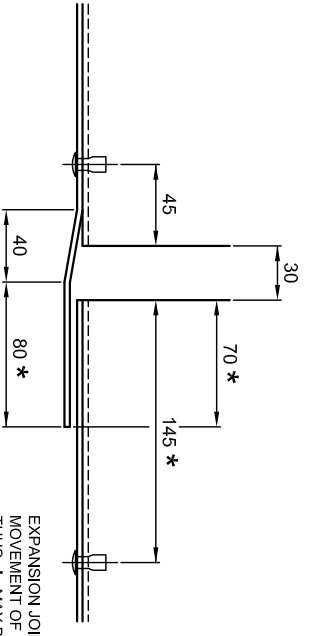
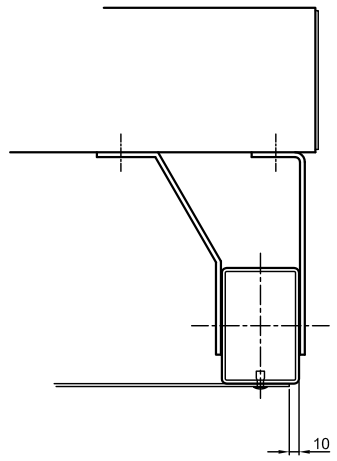


SOLID INFILL SHEETS ARE TO BE CONTINUOUS OVER STANDARD JOINTS BUT MUST STOP / START AT EXPANSION JOINTS TYPE 2 AND 3. SPECIAL INFILL PANELS TO ACCOMMODATE RAKES AND METRAGE PARAMETERS ARE TO BE LOCATED ADJACENT TO EXPANSION JOINTS AND ENDS OF PARAPET.

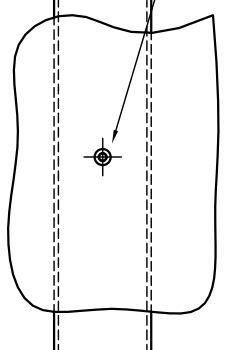
TRAFFIC FACE ELEVATION ON SHEETED PARAPET.

IMPORTANT NOTE.
OVERLAPPING SOLID INFILL SHEETS ARE TO BE FIXED FROM THE DEPARTURE END TOWARDS THE APPROACH END TO ENSURE THE OVERLAP IS IN THE DIRECTION OF TRAFFIC FLOW.

TOP OF SOLID INFILL PANELS TO BE A NOMINAL 10mm BELOW THE TOP OF THE TOP RAIL. VARIATIONS IN LEVELS DUE TO SITE CONDITIONS TO BE ACCOMMODATED BY GAP AT BOTTOM OF THE INFILL PANELS.



3mm THICK SOLID INFILL PANELS ARE TO PRE-DRILLED WITH 8mm DIAMETER HOLES PRIOR TO GALVANISING FOR FIXING TO RAILS WITH 6.35mm DIAETER MAGNALOK STAINLESS STEEL MONOBOLTS ref. MGL-P-48-6 OR EQUIVALENT. RAILS TO BE DRILLED TO SUIT ON SITE. (6.5mm MINIMUM / 7.0mm MAXIMUM).



NOTES:

- FOR DETAILS OF PARAPETS REFER TO DRAWING NUMBER VGSH 2000 - 01; VGSH 200 - 02 AND VGSH 2000 - 03.
- THE POSITION AND EXTENT OF SOLID INFILL PANELS SHALL BE IN ACCORDANCE WITH LAYOUT DRAWINGS.
- SOLID INFILL PANELS TO BE 3.0mm THICK STEEL GRADE S275 HOT DIPPED GALVANISED TO BS EN ISO 1461. ADDITIONAL FINISHES TO PRODUCE A NON-REFLECTIVE SURFACE CAN BE PROVIDED.

Rev	Date	By	Description
A	04/07	dvc	Drawing reallocated

SECTION SCHEDULE	
1	RAIL SECTION 120x80x4.0 RHS
2	POST SECTION 150x70x4.0 RHS
3	BASEPLATE SECTION 300x270x40
4	RAIL CLIENT TYPE 3: 42mm FLAT
5	RAIL CLIENT TYPE 4: 42mm FLAT

TOLERANCES AS SHOWN UNLESS STATED OTHERWISE.	
DIMENSIONS GREATER THAN 1000mm.	+ 2mm
LESS THAN 1000mm.	+ 1mm
ANGULAR DIMENSIONS.	+ 0°15'

NOTE: ALL ACCUMULATIVE TOLERANCES ARE TO BE CONTAINED WITHIN THE OVERALL TOLERANCE.

SITE ERECTION TOLERANCES WILL VARY TO SUIT SITE CONDITIONS.

ALL STANDARDS QUOTED ARE DEEMED CURRENT AT THE DATE THE DRAWING IS ISSUED FOR APPROVAL, UNLESS OTHERWISE STATED.

THIS DRAWING TO BE USED ONLY WITH W/O No. []

DRAWING TO BE RETURNED TO DRAWING OFFICE ON COMPLETION OF WORK.

Varley and Gulliver Ltd.
Alfred Street, Sparkbrook, Birmingham B12 8JR
Tel: 44 (0) 121 773 2441
Fax: 44 (0) 121 766 6875
Website: www.v-and-g.co.uk

TITLE STANDARD ARRANGEMENT DRAWINGS OF VGSH 2000 SERIES STEEL PARAPET SYSTEM. SOLID INFILL SHEETING.

DRAWING NUMBER VGSH 2000 - 08.A.