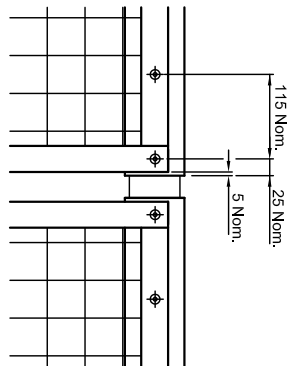
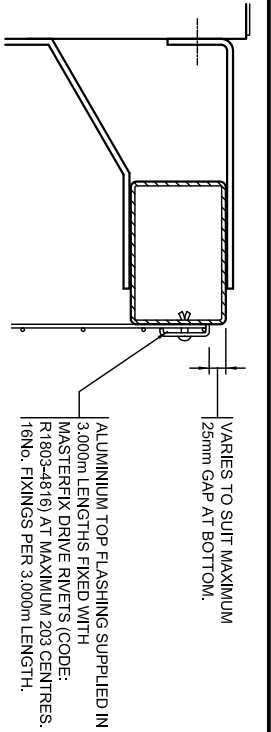


TYPICAL ELEVATION ON VGSH 2002 PARAPET SHOWING MESHING DETAILS.

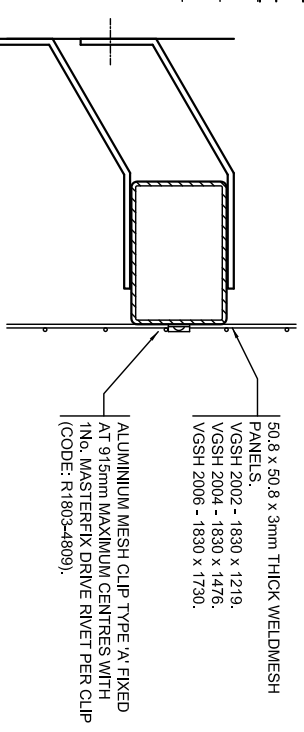
ENLARGED VIEW SHOWING NOMINAL FIXING LOCATIONS.



DETAIL C:

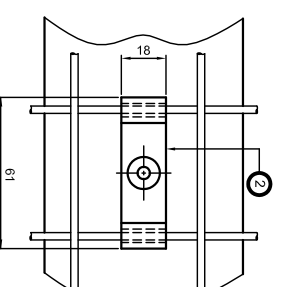


DETAIL D:



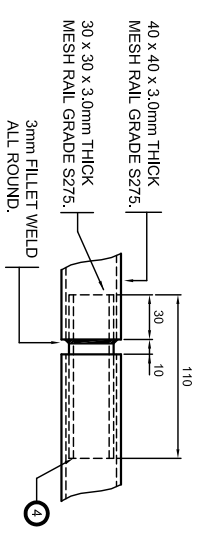
SYSTEM	REQUIREMENTS	NOTES
VGSH 2002	9No. PER 1.830m PANEL.	3.0m LONG TOP RAIL FLASHING STRIP TO HAVE FIXINGS SPACED AT MAXIMUM LONGITUDINAL CENTRES OF 203mm. MIDDLE AND BOTTOM RAIL CLIPS TO BE SPACED AT MAXIMUM LONGITUDINAL CENTRES OF 915mm.
VGSH 2004	12No. PER 1.830m PANEL.	
VGSH 2006		

MESH FIXING CLIP REQUIREMENTS.

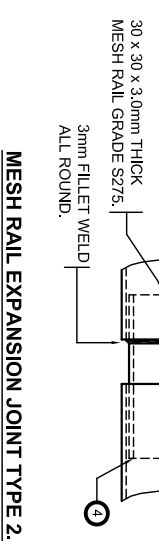


ELEVATION ON MESH CLIP TYPE 'A'.

MESH RAIL STANDARD JOINT TYPE 1.



MESH RAIL EXPANSION JOINT TYPE 2.



MATERIAL SPECIFICATION.

ITEM	SPECIFICATION	ITEM	SPECIFICATION
TOP FLASHING AND MESH CLIPS.	ALL EXTRUSIONS ARE TO BE ALUMINIUM ALLOY EN AW6082 T6.	MESH RAIL AND JOINTS.	ALL STEEL SECTIONS ARE TO BE IN ACCORDANCE WITH BS.EN.10025-1, BS.EN.10025-2, BS.EN.10219-1 AND BS.EN.10219-2.
WELDMESH PANELS.	STANDARD WELDMESH PANELS WITH 50.8 x 50.8 CENTRES x 3.0mm THICK WIRE TO ONE OF THE FOLLOWING SPECIFICATIONS: 1). CARBON STEEL WIRE HOT DIPPED GALVANISED TO BS.EN.ISO.1461 OR BY AN ALTERNATIVE METHOD SPECIFIED BY THE ENGINEER. 2). STAINLESS STEEL WIRE TO GRADE 304S31, 316S31 OR TO AN ALTERNATIVE SPECIFIED BY THE ENGINEER.	BOLTS.	M8 BOLTS / SETS TO BE GALVANISED STEEL TO CONFORM TO BS.3692 AND BS.ENISO.4016 GRADE 4.6. *
		WASHERS.	GALVANISED PLAIN WASHERS TO BE M8 FORM 'C' CONFORMING TO BS.4320. *
		RIVETS.	ALL RIVETS TO BE ALUMINIUM MASTERFIX DRIVE RIVETS CODE: R1803-4816 OR R1803-4809 OR SIMILAR APPROVED.

SECTION SCHEDULE	DESCRIPTION	TOLERANCES AS SHOWN UNLESS STATED OTHERWISE.
1	TOP FLASHING SECTION 1000mm.	± 2mm
2	MESH CLIP SECTION 113790.	± 1mm
3	MESH RAIL SECTION 40x40x3.0.	± 0.15
4	MESH RAIL JOINT SECTION 30x30x3.0.	± 0.15
5	MESH RAIL LUG SECTION 50x6.	± 0.15

SECTION SCHEDULE	DESCRIPTION	TOLERANCES AS SHOWN UNLESS STATED OTHERWISE.
1	TOP FLASHING SECTION 1000mm.	± 2mm
2	MESH CLIP SECTION 113790.	± 1mm
3	MESH RAIL SECTION 40x40x3.0.	± 0.15
4	MESH RAIL JOINT SECTION 30x30x3.0.	± 0.15
5	MESH RAIL LUG SECTION 50x6.	± 0.15

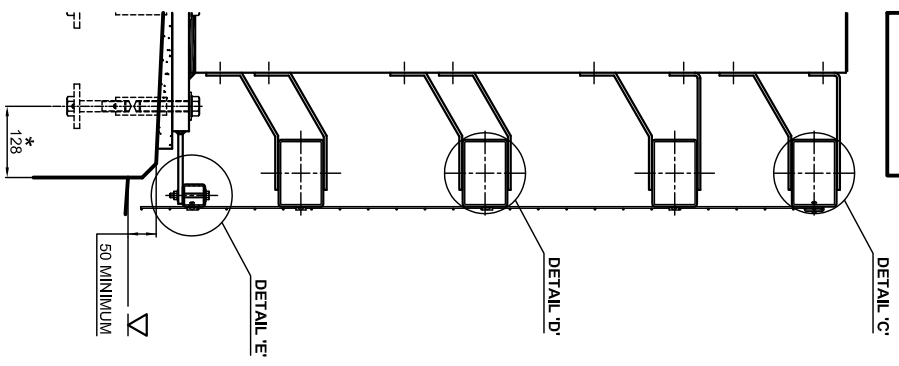
ALL DIMENSIONS IN MM. VGSH 2000 PARAPET SYSTEM ARE COVERED BY DESIGN RIGHTS AND PATENT APPLICATIONS.

Varley and Gulliver Ltd.
 Alfred Street, Sparkbrook, Birmingham B12 8JR
 Tel: 44 (0) 121 773 2441
 Fax: 44 (0) 121 766 6875
 Website: www.v-and-g.co.uk

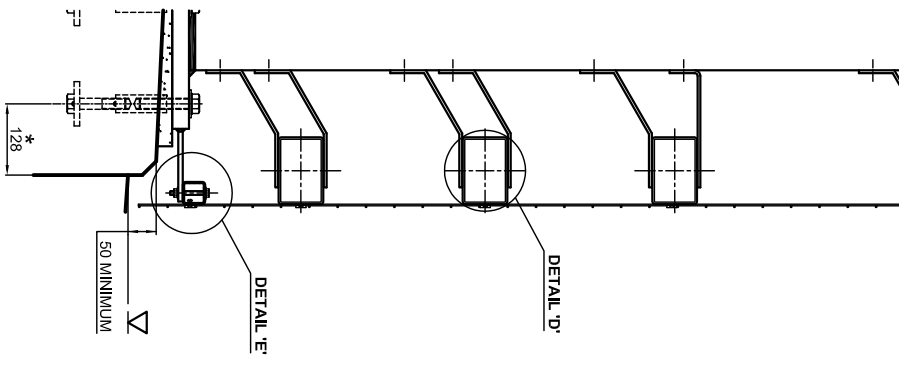
STANDARD ARRANGEMENT DRAWINGS OF VGSH 2000 SERIES STEEL PARAPET SYSTEM. PARAPET MESHING DETAILS. (OPTION 2)

DRAWING NUMBER: VGSH 2000 - 07.A.

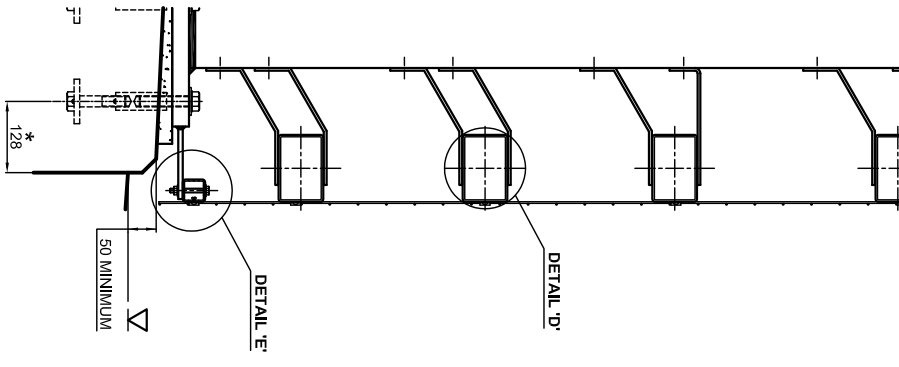
SECTION A-A FOR VGSH 2002 PARAPET.



SECTION A-A FOR VGSH 2004 PARAPET.



SECTION A-A FOR VGSH 2006 PARAPET.



COPYRIGHT © JANUARY 2007. VARLEY AND GULLIVER LIMITED.