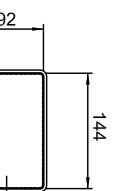
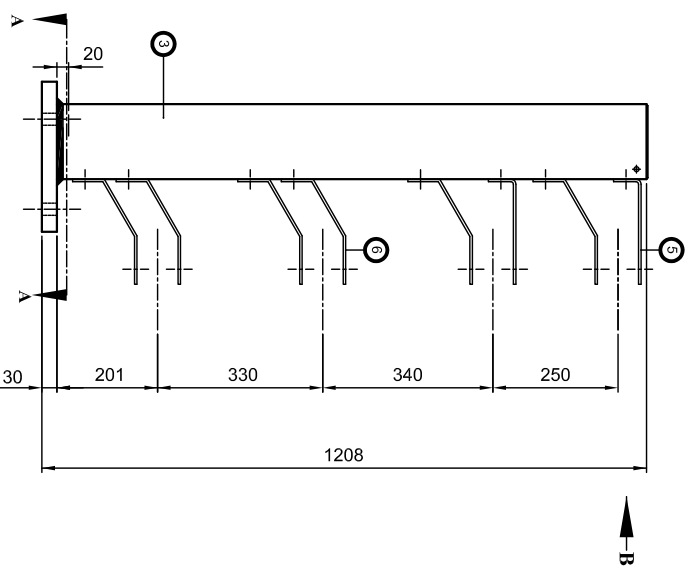


POST CAP.

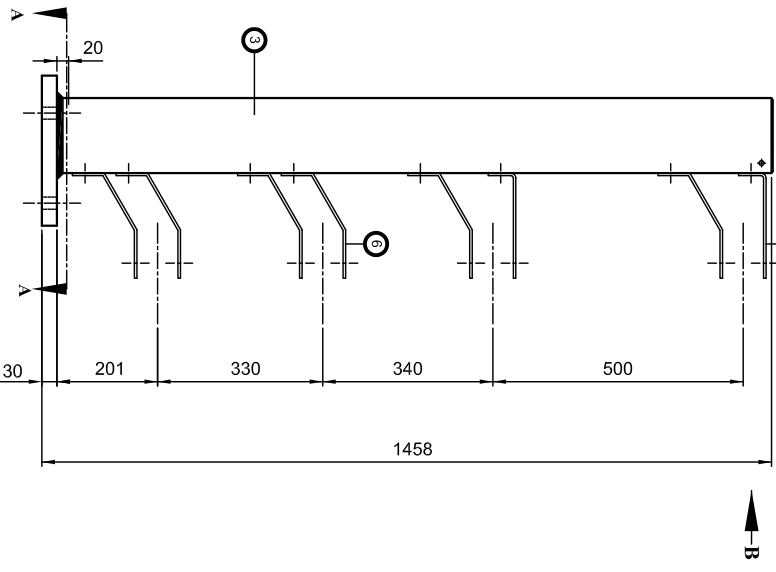


MINIMUM 3mm POST CAP TO BE WELDED TO TOP OF POST WITH A FILLET WELD ALL ROUND.

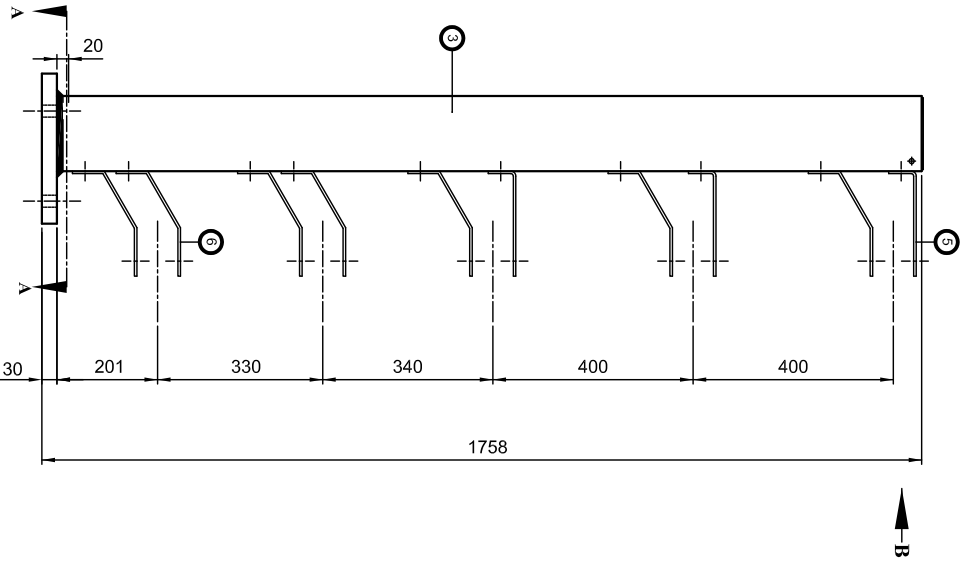
VIEW ON ARROW 'B'.



VGSH 2001 / 2002.

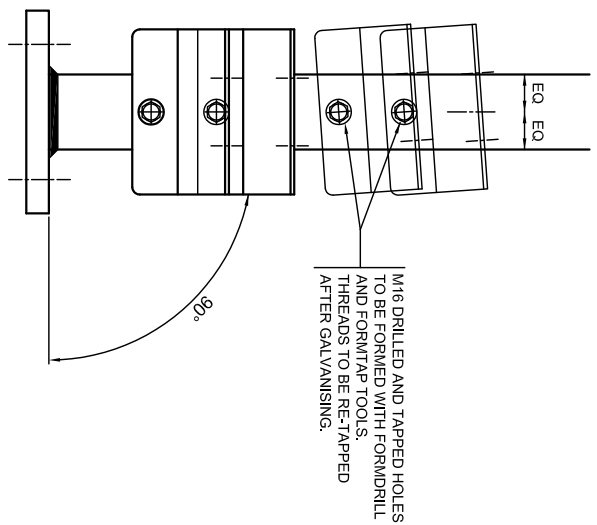


VGSH 2003 / 2004.



VGSH 2005 / 2006.

ALL POST TO RAIL CLEATS TO HAVE 1No. 20mm DIAMETER HOLE AND 2No. 50mm LONG x 20mm WIDE SLOTS IN THE POSITIONS SHOWN. CLEATS ARE TO BOLTED TO POSTS WITH AN M16 SETPIN, FLAT WASHER AND SPRING WASHER.



PART ELEVATION ON POST.

FOR POST RAKES UP TO AND INCLUDING 4°00'.

FOR POST RAKES OVER 4°01' CLEATS AND BASEPLATES TO BE RAKED TO SUIT SPECIAL REQUIREMENTS.

* ALTERNATIVE FINISHES:
AS A COST OPTION - IF THE PARAPET FINISH IS NOT DIPPED GALVANISED ONLY ALL FIXINGS CAN BE STAINLESS STEEL. TO BS.EN.10025-1 GRADE A480. ALL A480 SUPPLIED WITH APPROPRIATE NYLON ISOLATION WASHERS.

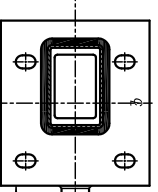
GENERAL NOTES.

- 1/ ALL STEEL WELDING TO BE IN ACCORDANCE WITH BS.EN.10111-1 AND BS.EN.10111-2.
- 2/ WELDERS AND WELDING PROCEDURES ARE IN ACCORDANCE WITH BS.EN.287-1 AND BS.EN.ISO.15607 RESPECTIVELY.
- 3/ DIMENSIONS RELATIVE TO HEIGHT DATUM ASSUME THERE IS NO LONGITUDINAL FALL ON THE PLATH. ADDITIONAL TOLERANCES TO TAKE ACCOUNT OF THESE FALLS ARE PERMISSIBLE.

MATERIAL SPECIFICATION.

ITEM	SPECIFICATION	ITEM	SPECIFICATION
POST SECTION.	ALL STEEL SECTIONS ARE TO BE IN ACCORDANCE WITH BS.EN.10025-1, BS.EN.10025-2, BS.EN.10210-1, BS.EN.10219-2, BS.EN.10219-3, BS.EN.10219-4, BS.EN.10219-5, BS.EN.10219-6, BS.EN.10219-7, BS.EN.10219-8, BS.EN.10219-9, BS.EN.10219-10, BS.EN.10219-11, BS.EN.10219-12, BS.EN.10219-13, BS.EN.10219-14, BS.EN.10219-15, BS.EN.10219-16, BS.EN.10219-17, BS.EN.10219-18, BS.EN.10219-19, BS.EN.10219-20, BS.EN.10219-21, BS.EN.10219-22, BS.EN.10219-23, BS.EN.10219-24, BS.EN.10219-25, BS.EN.10219-26, BS.EN.10219-27, BS.EN.10219-28, BS.EN.10219-29, BS.EN.10219-30, BS.EN.10219-31, BS.EN.10219-32, BS.EN.10219-33, BS.EN.10219-34, BS.EN.10219-35, BS.EN.10219-36, BS.EN.10219-37, BS.EN.10219-38, BS.EN.10219-39, BS.EN.10219-40, BS.EN.10219-41, BS.EN.10219-42, BS.EN.10219-43, BS.EN.10219-44, BS.EN.10219-45, BS.EN.10219-46, BS.EN.10219-47, BS.EN.10219-48, BS.EN.10219-49, BS.EN.10219-50.	BOLTS.	HOLDING DOWN SETPINS TO CONFORM TO BS.3692 AND BE STAINLESS STEEL TO BS.EN.ISO.3506-1 GRADE A480. ALL OTHER BOLTS / SETPINS TO BE GALVANISED STEEL TO CONFORM TO BS.3692 AND BS.EN.ISO.4014 GRADE 8.8.
BASEPLATE.	ALL STEEL SECTIONS ARE TO BE IN ACCORDANCE WITH BS.EN.10025-1, BS.EN.10025-2, BS.EN.10210-1, BS.EN.10219-2, BS.EN.10219-3, BS.EN.10219-4, BS.EN.10219-5, BS.EN.10219-6, BS.EN.10219-7, BS.EN.10219-8, BS.EN.10219-9, BS.EN.10219-10, BS.EN.10219-11, BS.EN.10219-12, BS.EN.10219-13, BS.EN.10219-14, BS.EN.10219-15, BS.EN.10219-16, BS.EN.10219-17, BS.EN.10219-18, BS.EN.10219-19, BS.EN.10219-20, BS.EN.10219-21, BS.EN.10219-22, BS.EN.10219-23, BS.EN.10219-24, BS.EN.10219-25, BS.EN.10219-26, BS.EN.10219-27, BS.EN.10219-28, BS.EN.10219-29, BS.EN.10219-30, BS.EN.10219-31, BS.EN.10219-32, BS.EN.10219-33, BS.EN.10219-34, BS.EN.10219-35, BS.EN.10219-36, BS.EN.10219-37, BS.EN.10219-38, BS.EN.10219-39, BS.EN.10219-40, BS.EN.10219-41, BS.EN.10219-42, BS.EN.10219-43, BS.EN.10219-44, BS.EN.10219-45, BS.EN.10219-46, BS.EN.10219-47, BS.EN.10219-48, BS.EN.10219-49, BS.EN.10219-50.	NUTS.	ALL NUTS TO BE GALVANISED STEEL TO CONFORM TO BS.3692 AND BS.EN.ISO. 4032 GRADE 8.
CLEAT TYPE 1.	POST SECTIONS TO BE GRADE S355J2H, POST TO RAIL CLEATS TO BE GRADE S275J0 AND BASEPLATE TO BE GRADE S355J2G3.	WASHERS.	GALVANISED PLAIN WASHERS TO BE M20x50 o/dia. x 4mm THICK AND M16 FROM A CONFORMING TO BS.4320. GALVANISED SPRING WASHERS TO BE TYPE A TO BS.4464.
CLEAT TYPE 2.	POST SECTIONS TO BE GRADE S275J0 AND BASEPLATE TO BE GRADE S355J2G3.		
MESH LUG.			

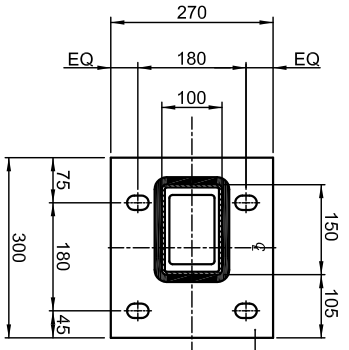
SECTION A-A. (APPLICABLE TO VGSH 2002, 2004 AND 2006 ONLY)



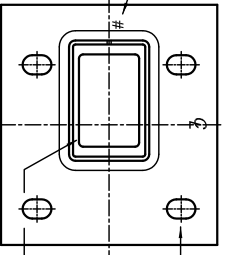
4No. SLOTS 36mm LONG x 26mm WIDE IN THE BASEPLATE IN THE LOCATIONS SHOWN. ORIENTATION OF SLOTS CAN ROTATE 90° TO SUIT SITE CONDITIONS.

PARAPET SYSTEM VGSH 2002, VGSH 2004 AND VGSH 2006 WITH OPTION 2 (50.8x50.8) MESH PANELS TO HAVE MESH LUG WELDED TO THE BASEPLATE IN LOCATION SHOWN.

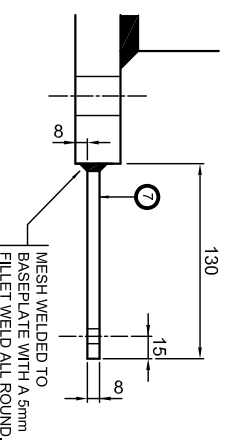
SECTION A-A.



from DIAMETER DRAIN HOLE TO BE LOCATED CENTRALLY IN THE REAR WALL OF POST ADJACENT TO TOP OF WELD AS INDICATED BY #.



4No. SLOTS 36mm LONG x 26mm WIDE IN THE BASEPLATE IN THE LOCATIONS SHOWN. ORIENTATION OF SLOTS CAN ROTATE 90° TO SUIT SITE CONDITIONS.



ENLARGED VIEW ON MESH LUG.

Varley and Gulliver Ltd.
 Alfred Street, Sparkbrook, Birmingham B12 8JR
 Tel: 44 (0) 121 773 2441
 Fax: 44 (0) 121 766 6875
 Website: www.v-and-g.co.uk

STANDARD ARRANGEMENT DRAWINGS OF VGSH 2000 SERIES STEEL PARAPET SYSTEM. PARAPET POST DETAILS.

DRAWING NUMBER: VGSH 2000 - 05.A.

SECTION SCHEDULE	TOLERANCES AS SHOWN UNLESS STATED OTHERWISE.
1. POST SECTION 150x100x5.0 RHS	TOLERANCES AS SHOWN UNLESS STATED OTHERWISE.
2. BASEPLATE SECTION 300x270x30	TOLERANCES AS SHOWN UNLESS STATED OTHERWISE.
3. RAIL CLEAT TYPE 3, 4mm FLAT	TOLERANCES AS SHOWN UNLESS STATED OTHERWISE.
4. RAIL CLEAT TYPE 4, 4mm FLAT	TOLERANCES AS SHOWN UNLESS STATED OTHERWISE.
5. RAIL CLEAT TYPE 5, 4mm FLAT	TOLERANCES AS SHOWN UNLESS STATED OTHERWISE.
6. MESH RAIL TYPE 4, 4mm SECTION 50x4	TOLERANCES AS SHOWN UNLESS STATED OTHERWISE.
7. MESH RAIL TYPE 5, 4mm SECTION 50x4	TOLERANCES AS SHOWN UNLESS STATED OTHERWISE.

W/O No. []
 DRAWING TO BE RETURNED TO DRAWING OFFICE ON COMPLETION OF WORK.

Rev	Date	By	Description
A	04/07	dvc	Drawing reallocated

MANUFACTURING TOLERANCES:

LESS THAN 1000mm.	± 1mm
1000mm TO 10000mm.	± 0.15

NOTE: ALL ACCUMULATIVE TOLERANCES ARE TO BE CONTAINED WITHIN THE OVERALL TOLERANCE.

NOTE: ALL STANDARDS QUOTED ARE DEEMED CURRENT AT THE DATE THE DRAWING IS ISSUED FOR APPROVAL, UNLESS OTHERWISE STATED.

WILL VARY TO SUIT SITE CONDITIONS.

ALL STANDARDS QUOTED ARE DEEMED CURRENT AT THE DATE THE DRAWING IS ISSUED FOR APPROVAL, UNLESS OTHERWISE STATED.

THIS DRAWING TO BE USED ONLY WITH W/O No. []