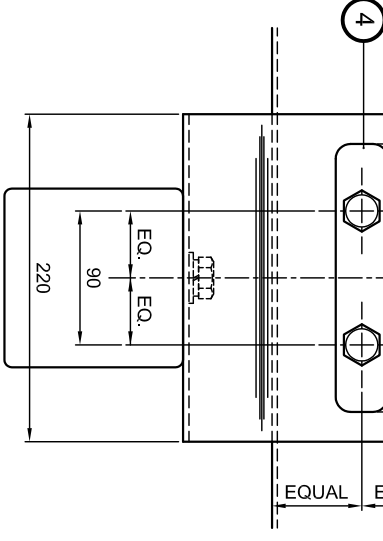
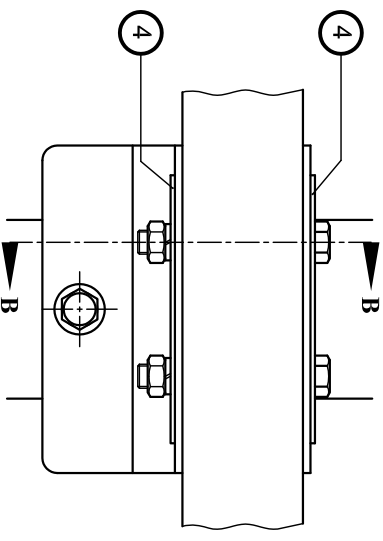
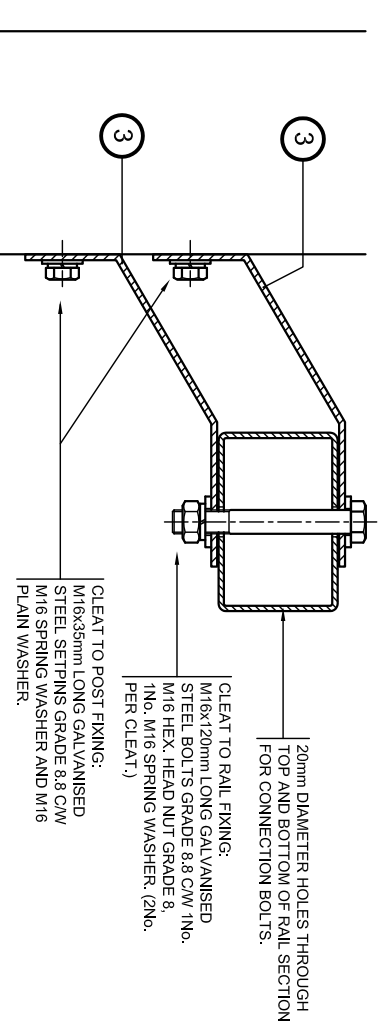
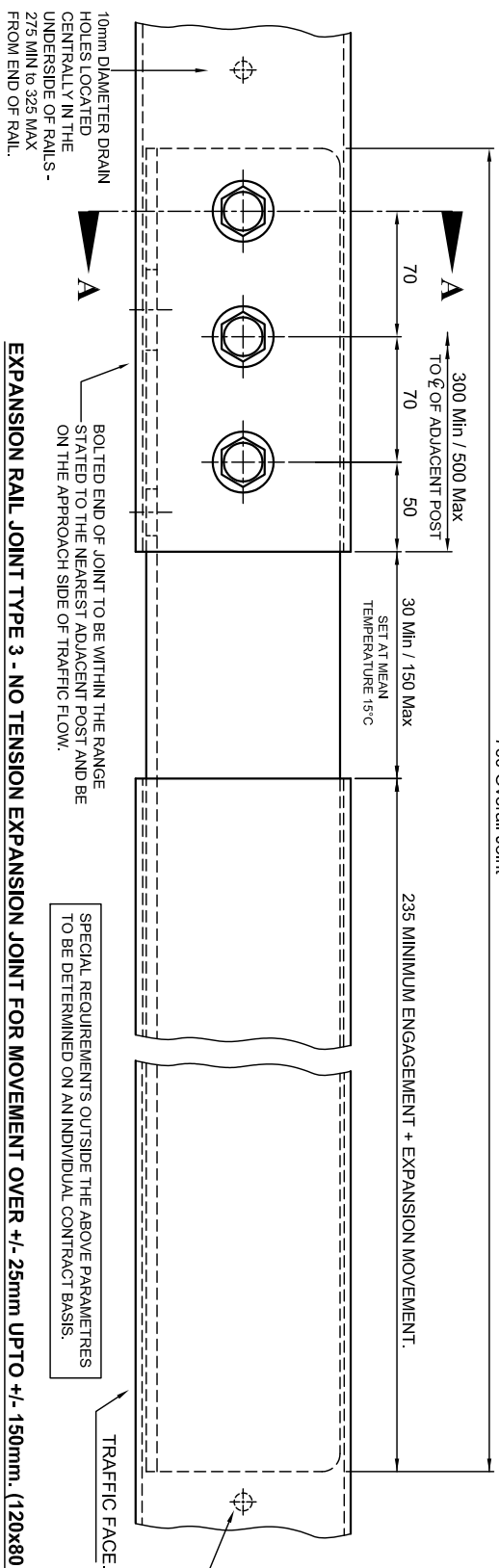


**GENERAL NOTES.**

- 1/ ALL STEEL WELDING TO BE IN ACCORDANCE WITH BS.EN.1011-2.
- 2/ WELDERS AND WELDING PROCEDURES ARE IN ACCORDANCE WITH BS.EN.287-1 AND BS.EN.ISO.15607 RESPECTIVELY.



MATERIAL SPECIFICATION.	
ITEM	SPECIFICATION
RAIL JOINTS.	ALL STEEL SECTIONS ARE TO BE IN ACCORDANCE WITH BS.EN.10025-1 AND BS.EN.10025-2
CLEAT TYPE 4.	RAIL JOINTS, POST TO RAIL CLEATS TO BE GRADE S275, 40 AND WASHER BARS TO BE GRADE S275.
WASHER BAR.	WASHERS.
	HOLDING DOWN SETPINS TO CONFORM TO BS.3692 AND BE STAINLESS STEEL TO BS.EN.ISO.3506-1 GRADE A4-70. ALL OTHER BOLTS / SETPINS TO BE GALVANISED STEEL TO CONFORM TO BS.3692 AND BS.EN.ISO.4014 GRADE 8.8.*
	NUTS.
	ALL NUTS TO BE GALVANISED STEEL TO CONFORM TO BS.3692 AND BS.EN.ISO. 4032 GRADE 8.
	WASHERS.
	GALVANISED PLAIN WASHERS TO BE M20x50 o/dia. x 4mm THICK AND M16 FORM 'A' CONFORMING TO BS.4320. GALVANISED SPRING WASHERS TO BE TYPE 'A' TO BS.4464.

\* ALTERNATIVE FIXINGS: AS A COST OPTION - IF THE PARAPET FINISH IS HOT DIPPED GALVANISED ONLY ALL FIXINGS CAN BE STAINLESS STEEL TO BS.EN.ISO.3506-1 GRADE A4-70 SUPPLIED WITH APPROPRIATE NYLON ISOLATION WASHERS.

SECTION SCHEDULE	
1	RAIL SECTION 120x80x10/15/20
2	RAIL JOINT SECTION 100x80x20.
3	RAIL CLEAT TYPE 'A' 40mm THICK PLAT
4	WASHER BAR SECTION 180x40x3.0 FLAT.

SCALE	DATE	SCALE	DATE
P.G.H.	29/01/2007	CHK.	D.V.C.

W/O No. \_\_\_\_\_

DRAWING TO BE RETURNED TO DRAWING OFFICE ON COMPLETION OF WORK.

**Varley and Gulliver Ltd.**  
 Alfred Street, Sparkbrook, Birmingham B12 8JR  
 Tel: 44 (0) 121 773 2441  
 Fax: 44 (0) 121 766 6875  
 Website: www.v-and-g.co.uk

TITLE: STANDARD ARRANGEMENT DRAWINGS OF VGSH 2000 SERIES STEEL PARAPET SYSTEM.  
 DRAWING NUMBER: VGSH 2000 - 04.A.

Copyright © January 2007. Varley and Gulliver Limited.  
 VGSH 2000 Parapet System are covered by design rights and patent pending.