

**RAIL JOINT TYPE 1.** 16 NOMINAL GAP. UPTO +/- 10 MOVEMENT. TOP FLASHING TO STOP AND START AT ALL RAIL JOINTS.

**RAIL JOINT TYPE 2.** 30 NOMINAL GAP. UPTO +/- 25 MOVEMENT. SOLID INFILL PANELS, MESH AND BOTTOM MESH RAIL ANGLE TO STOP AND START AT RAIL JOINTS TYPE 2.

**DETAIL G.**

**DETAIL A.** INDIVIDUAL INFILL PANELS ARE TO BE CLOSELY BUTTED TOGETHER EXCEPT AT RAIL JOINTS AND RIVETTED TO RAILS AS SHOWN.

**DETAIL B.** 3mm THICK COVER PLATES FITTED TO REAR OF SOLID INFILL SHEET AT EACH RAIL JOINT. COVER PLATES ATTACHED ON SITE WITH POP RIVETS ref. TEPD 666 AS /AS66 ABS OR SIMILAR.

**DETAIL C.** EXPANSION JOINTS IN RAILS NEED NOT BE ABOVE THE BRIDGE EXPANSION JOINT BUT MUST OCCUR IN THE PANEL SPANNING THE BRIDGE JOINT.

**DETAIL D.** VERTICAL FLASHING AND BOTTOM ANGLE TO BE JOINED WITH 1No. M8 x 25mm LONG (MIN.) STAINLESS STEEL SET SCREW c/w 1No. M8 STAINLESS STEEL HEXAGONAL NUT GRADE A2 (MIN), 2No. STAINLESS STEEL FLAT WASHERS FORM 'B' AND 1No. STAINLESS STEEL SPRING WASHER TYPE 'B'.

**DETAIL E.** 57 LONG x 45 WIDE x 9.5mm THICK ALUMINIUM SHEETING LUG TO BE WELDED TO THE BASEPLATE WITH A 4mm FILLET WELD ALL ROUND.

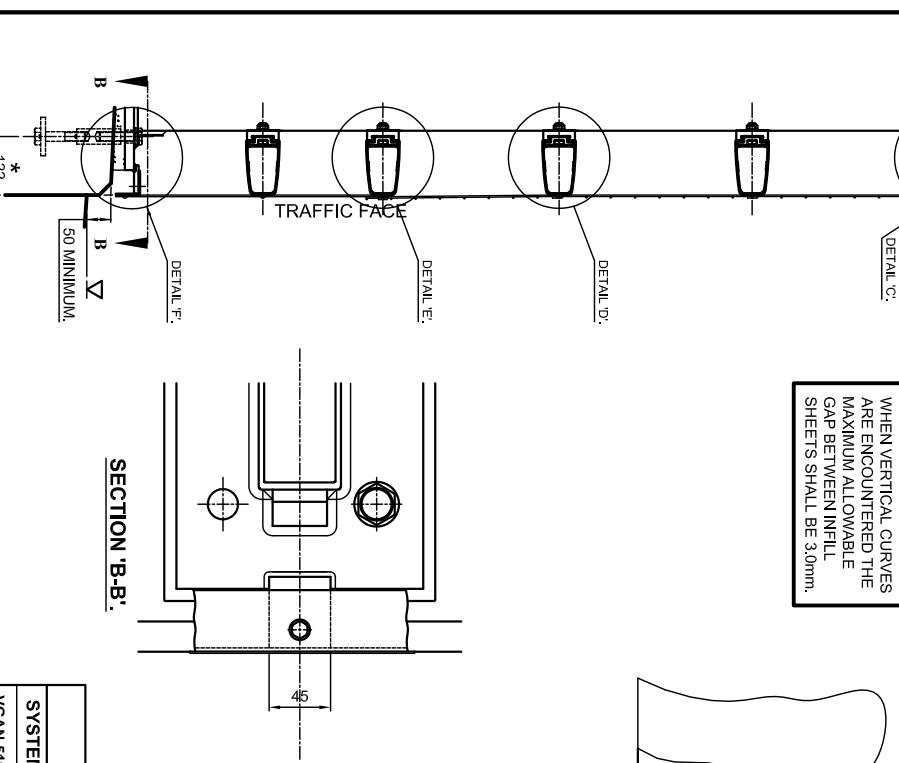
**DETAIL F.** SHEETING LUG TO BE DRILLED AND TAPPED FOR 1No. M8 x 25mm LONG STAINLESS STEEL SET SCREW.

**DETAIL H.** 6,000mm LONG 50.8 x 50.8 x 3.2mm THICK ALUMINIUM SHEETING ANGLE RAIL. 10mm DIAMETER HOLE FOR ATTACHING TO MESH LUG TO BE DRILLED TO SUIT ON SITE.

**DETAIL I.** MESH ANGLE RAIL TO BE DRILLED WITH 10mm DIAMETER HOLES ON SITE TO SUIT SPLICE JOINT.

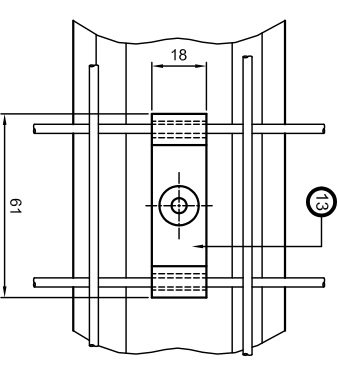
**DETAIL J.** SPLICE JOINT TO HAVE 4No. 38mm LONG x 10mm WIDE SLOTS IN THE LOCATIONS INDICATED.

**TYPICAL ELEVATION ON VGAN 510 PARAPET SHOWING MESHING AND SHEETING DETAILS.**

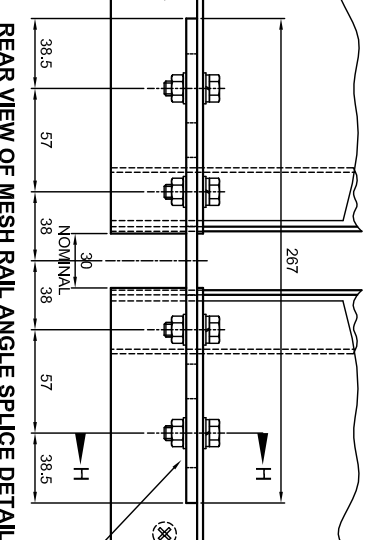


**SECTION A-A FOR VGAN 510 PARAPET.**

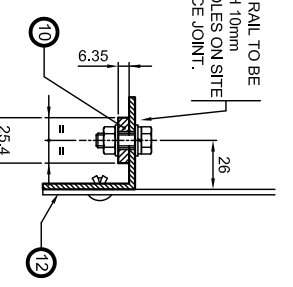
**ELEVATION ON MESH CLIP TYPE 'A'.**



**REAR VIEW OF MESH RAIL ANGLE SPLICE DETAIL.**



**SECTION H-H.**



**GENERAL NOTES.**

1. ALL ALUMINIUM WELDING TO BE IN ACCORDANCE WITH BS EN 1011-4.

2. FABRICATION TO BE IN ACCORDANCE WITH BS 8118-2.

**MATERIAL SPECIFICATION.**

ITEM	SPECIFICATION	ITEM	SPECIFICATION
TOP FLASHING, MESH CLIPS, BOTTOM ANGLE AND BOTTOM ANGLE JOINTS.	ALL EXTRUSIONS ARE TO BE ALUMINIUM ALLOY EN AW6082 T6.	BOLTS.	ALL BOLTS / SETSCREWS TO CONFORM TO BS 3692 AND BE STAINLESS STEEL TO BS EN ISO 3506-1 GRADE A480.
STANDARD WELDMESH PANELS WITH 50.8 x 50.8 CENTRES x 3.2mm THICK WIRE TO ONE OF THE FOLLOWING SPECIFICATIONS: 1. CARBON STEEL WIRE HOT DIPPED GALVANISED TO BS EN ISO 1461 OR BY AN ALTERNATIVE METHOD SPECIFIED BY THE ENGINEER. 2. STAINLESS STEEL WIRE TO GRADE 304S31, 316S31 OR TO AN ALTERNATIVE SPECIFIED BY THE ENGINEER.		NUTS.	ALL NUTS TO CONFORM TO BS 3692 AND BE STAINLESS STEEL TO BS EN ISO 3506-2 GRADE A4.
WELDMESH PANELS.		PLAIN WASHERS.	WASHERS TO BE M20 FORM 'B' AND M12 FORM 'A' CONFORMING TO BS 4320 AND BE STAINLESS STEEL TO BS EN ISO 3506 GRADE A4 OR A2.
		INFILL SHEETING AND COVER PLATES.	3.0mm THICK ALUMINIUM ALLOY EN AW1050A EITHER SELF-COLOURED OR GRIT BLASTED TO A MAXIMUM DEPTH OF 1.0mm ON THE TRAFFIC FACE ONLY.

SYSTEM	REQUIREMENTS	NOTES
VGAN 510.	9No. PER 1.830m PANEL.	THE MAXIMUM LONGITUDINAL SPACING BETWEEN MESH CLIPS TYPE 'A' IS 1,000mm.

**SECTION SCHEDULE**

NO.	SECTION	DESCRIPTION
10	MESH RAIL ANGLE SPLICE SECTION	
11	TOP FLASHING SECTION	
12	MESH RAIL ANGLE SECTION	
13	MESH CLIP TYPE 'A' SECTION	

Rev	Date	By	Description
			MANUFACTURING TOLERANCES.
			TOLERANCES AS SHOWN UNLESS STATED OTHERWISE.
			DIMENSIONS: TOLERANCES: GREATER THAN ± 2mm
			LESS THAN ± 1mm
			ANGULAR DIMENSIONS: ± 0°15'

NOTE: ALL ACCUMULATIVE TOLERANCES ARE TO BE CONTAINED WITHIN THE OVERALL TOLERANCE.

SCALE	DRAWING TO BE RETURNED TO DRAWING OFFICE ON COMPLETION OF WORK	W/O No.
DRAWING TO BE RETURNED TO DRAWING OFFICE ON COMPLETION OF WORK		

**Varley and Gulliver Ltd.**

Alfred Street, Sparkbrook, Birmingham B12 8JR

Tel: 44 (0) 121 773 2441

Fax: 44 (0) 121 766 6875

Website: www.v-and-g.co.uk

TITLE	DRAWING NUMBER
STANDARD ARRANGEMENT DRAWINGS OF VGAN 500 SERIES ALUMINIUM PARAPET SYSTEM.	VGAN 510 SHEETING AND MESHING DETAILS.
VGAN 500 PARAPET SYSTEM ARE COVERED BY DESIGN RIGHTS AND PATENT APPLICATIONS.	VGAN 500 - 09.