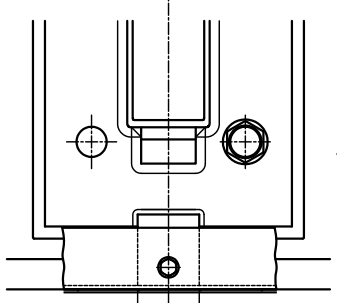
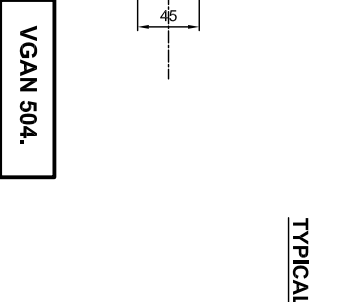


TYPICAL ELEVATION ON VGAN 502 PARAPET SHOWING MESHING DETAILS.

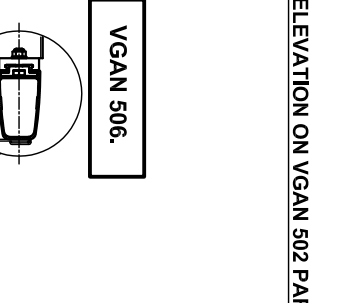
| SYSTEM | REQUIREMENTS | NOTES |
|-----------|-------------------------|--|
| VGAN 502. | 9No. PER 1,830m PANEL. | THE MAXIMUM LONGITUDINAL SPACING BETWEEN MESH CLIPS TYPE 'A' IS 1,000mm. |
| VGAN 504. | 12No. PER 1,830m PANEL. | |
| VGAN 506. | | |
| VGAN 508. | | |



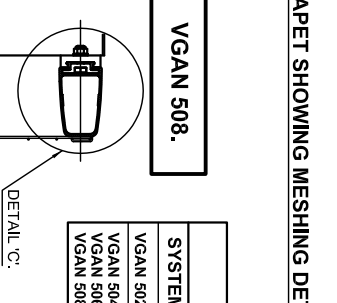
SECTION 'B-B'



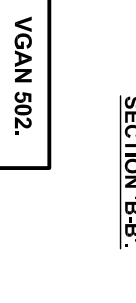
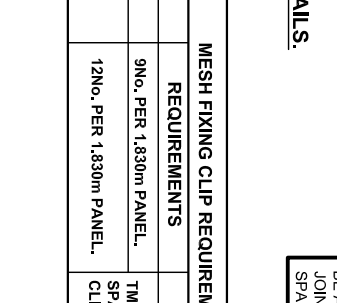
VGAN 504.



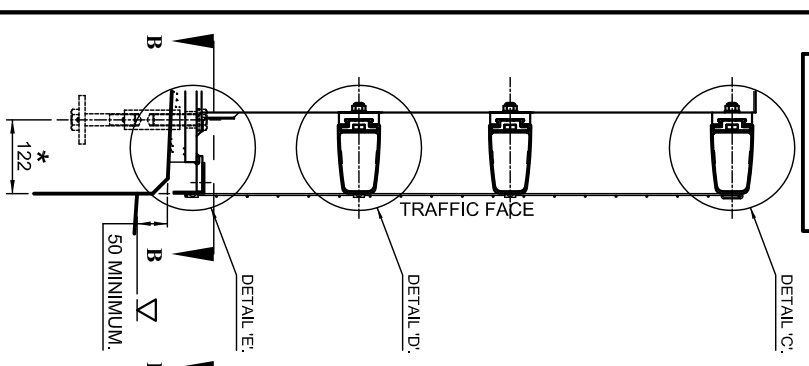
VGAN 506.



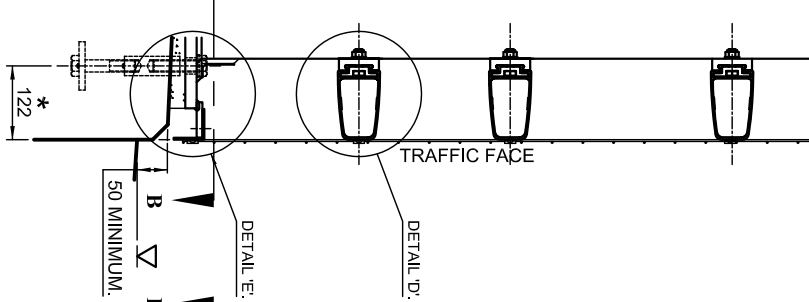
VGAN 508.



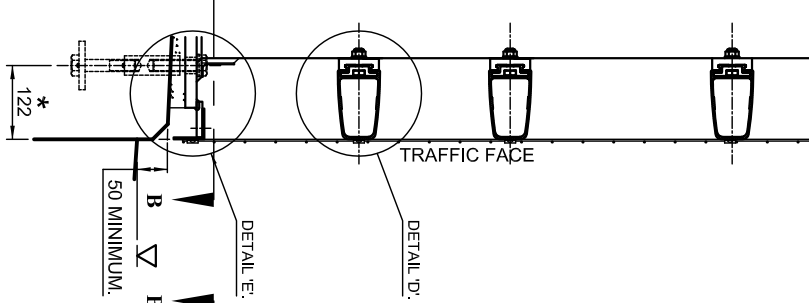
VGAN 502.



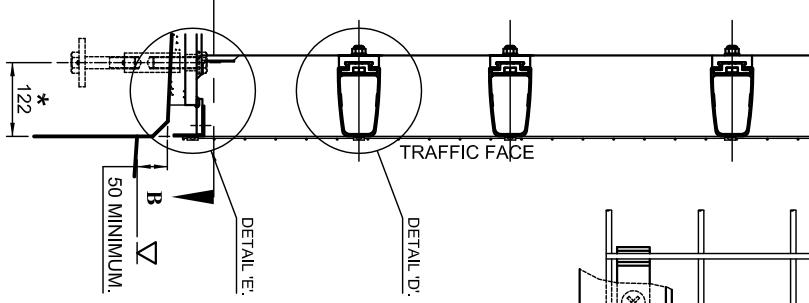
SECTION A-A FOR VGAN 502 PARAPET.



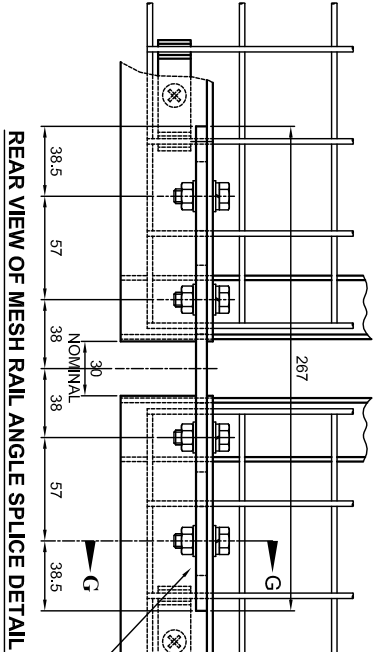
SECTION A-A FOR VGAN 504 PARAPET.



SECTION A-A FOR VGAN 506 PARAPET.



SECTION A-A FOR VGAN 508 PARAPET.

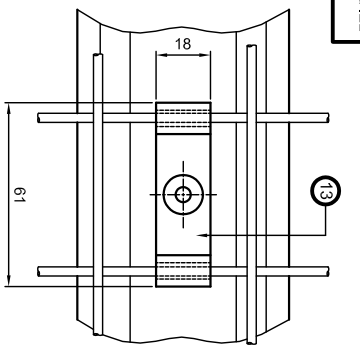


REAR VIEW OF MESH RAIL ANGLE SPLICE DETAIL.

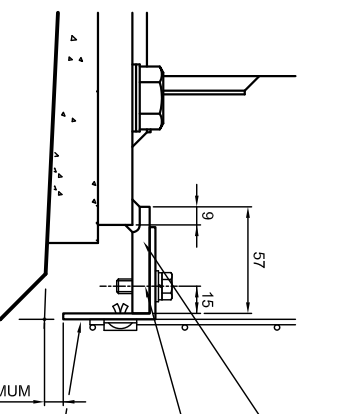
GENERAL NOTES.
 1. ALL ALUMINIUM WELDING TO BE IN ACCORDANCE WITH BS.8118-2.
 2. FABRICATION TO BE IN ACCORDANCE WITH BS.8118-2.
 BS.EN.1011-4.

MATERIAL SPECIFICATION.

| ITEM | SPECIFICATION | ITEM | SPECIFICATION |
|---|--|----------------|--|
| TOP FLASHING, MESH CLIPS, BOTTOM ANGLE AND BOTTOM ANGLE JOINTS. | ALL EXTRUSIONS ARE TO BE ALUMINIUM ALLOY EN AW6082 T6. | BOLTS. | ALL BOLTS / SETSCIPS TO CONFORM TO BS.3692 AND BE STAINLESS STEEL TO BS.EN.ISO.3506-1 GRADE A4/80. |
| WELDMESH PANELS. | STANDARD WELDMESH PANELS WITH 50.8 x 50.8 CENTRES x 3.2mm THICK WIRE TO ONE OF THE FOLLOWING SPECIFICATIONS: 1). CARBON STEEL WIRE HOT DIPPED GALVANISED TO BS.EN.ISO.1461 OR BY AN ALTERNATIVE METHOD SPECIFIED BY THE ENGINEER. 2). STAINLESS STEEL WIRE TO GRADE 304S31, 316S31 OR TO AN ALTERNATIVE SPECIFIED BY THE ENGINEER. | NUTS. | ALL NUTS TO CONFORM TO BS.3692 AND BE STAINLESS STEEL TO BS.EN.ISO.3506-2 GRADE A4. |
| | | PLAIN WASHERS. | WASHERS TO BE M20 FORM 'B' AND M12 FORM 'A' CONFORMING TO BS.4320 AND BE STAINLESS STEEL TO BS.EN.ISO.3506 GRADE A4 OR A2. |

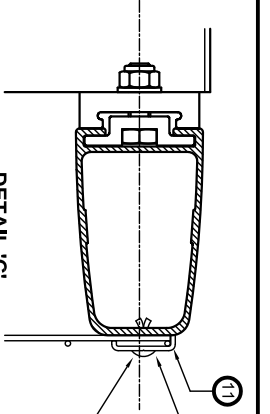


ELEVATION ON MESH CLIP TYPE 'A'.



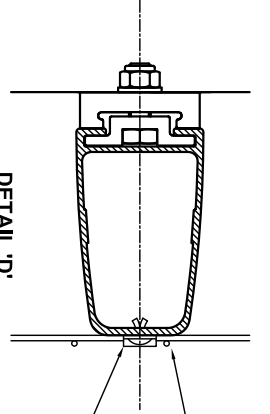
DETAIL 'F'.

57 LONG x 45 WIDE x 9.5mm THICK ALUMINIUM MESH LUG TO BE WELDED TO THE BASEPLATE WITH A 4mm FILLET WELD ALL ROUND.
 MESH LUG TO BE DRILLED AND TAPPED FOR 1No. M8 x 25mm LONG STAINLESS STEEL SET SCREW.
 6,000mm LONG 50.8 x 50.8 x 3.2mm THICK ALUMINIUM MESH ANGLE RAIL. 10mm DIAMETER HOLE FOR ATTACHING TO MESH LUG TO BE DRILLED TO SUIT ON SITE.



DETAIL 'C'.

ALUMINIUM TOP FLASHINGS SUPPLIED IN 3,000mm LENGTHS.
 ALUMINIUM FLASHING FIXED WITH AMFAST DRIVE RIVETS (CODE: HSBN 48180) AT MAXIMUM 203 CENTRES. 16No. FIXINGS PER 3,000mm LENGTH.



DETAIL 'D'.

50.8 x 50.8 x 3mm THICK WELDMESH PANELS.
 VGAN 502 - 1830 x 915.
 VGAN 504 - 1830 x 1168
 VGAN 506 - 1830 x 1320
 VGAN 508 - 1830 x 1422
 ALUMINIUM MESH CLIP TYPE 'A'.
 MESH CLIP FIXED WITH 1No. AMFAST DRIVE RIVET (CODE: HSBN 48100).

| Rev | Date | Description |
|-----|------|-------------|
| | | |

| SECTION | SCALE | DATE | DATE |
|---------|-------|------------|------|
| 13 | 1:1 | 01/06/2006 | |
| 12 | 1:1 | | |
| 11 | 1:1 | | |
| 10 | 1:1 | | |

| SECTION | SCALE | DATE | DATE |
|---------|-------|------------|------|
| 13 | 1:1 | 01/06/2006 | |
| 12 | 1:1 | | |
| 11 | 1:1 | | |
| 10 | 1:1 | | |

| SECTION | SCALE | DATE | DATE |
|---------|-------|------------|------|
| 13 | 1:1 | 01/06/2006 | |
| 12 | 1:1 | | |
| 11 | 1:1 | | |
| 10 | 1:1 | | |

Varley and Gulliver Ltd.
 Alfred Street, Sparkbrook, Birmingham B12 8JR
 Tel: 44 (0) 121 773 2441
 Fax: 44 (0) 121 766 6875
 Website: www.v-and-g.co.uk

| TITLE | DRAWING NUMBER |
|---|----------------|
| STANDARD ARRANGEMENT DRAWINGS OF VGAN 500 SERIES ALUMINIUM PARAPET SYSTEM. PARAPET MESHING DETAILS. | VGAN 500 - 08. |