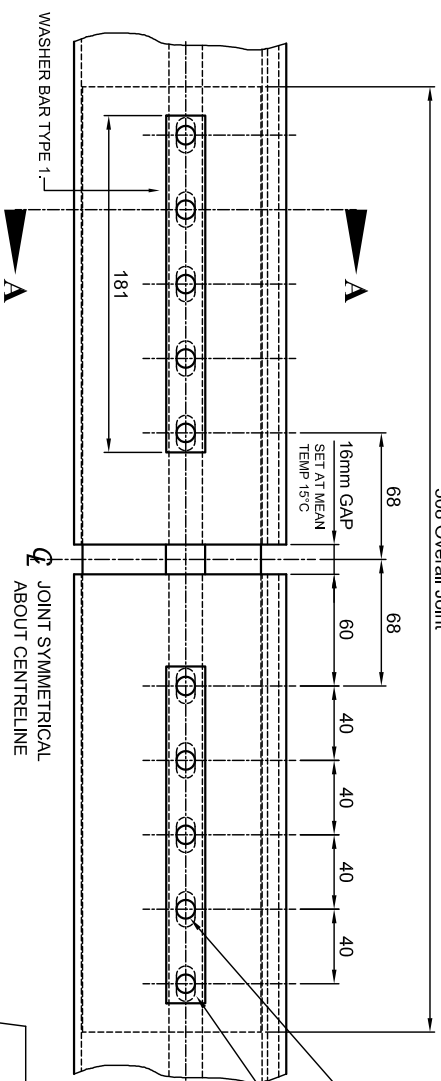
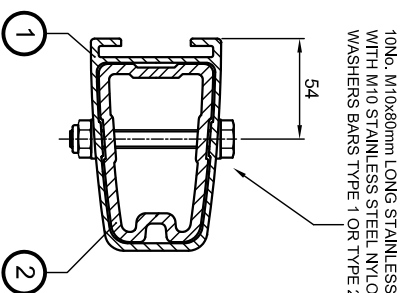


508 Overall Joint



STANDARD RAIL JOINT TYPE 1.

10.5mm DIAMETER HOLES THROUGH TOP AND BOTTOM OF RAIL SECTION FOR JOINT BOLTS.  
19mm LONG x 10.5mm WIDE SLOTS THROUGH TOP AND BOTTOM OF JOINT SECTION FOR JOINT BOLTS.

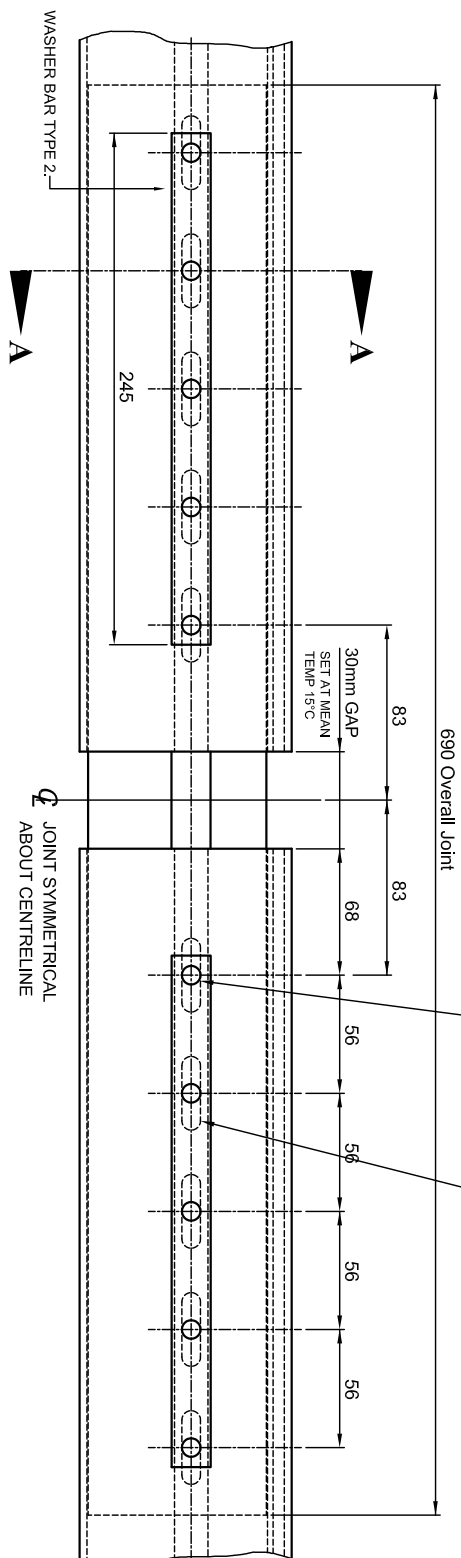


SECTION A-A.

10No. M10x80mm LONG STAINLESS STEEL BOLTS WITH M10 STAINLESS STEEL NYLOC NUTS AND 2No. WASHERS BARS TYPE 1 OR TYPE 2.

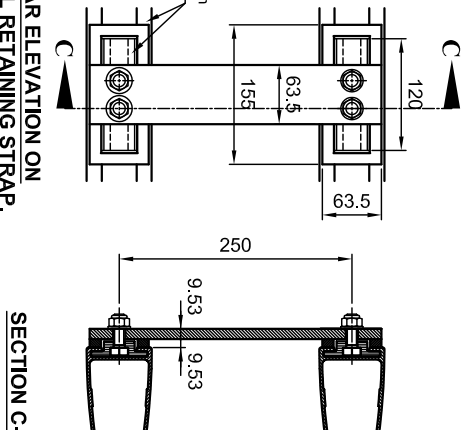
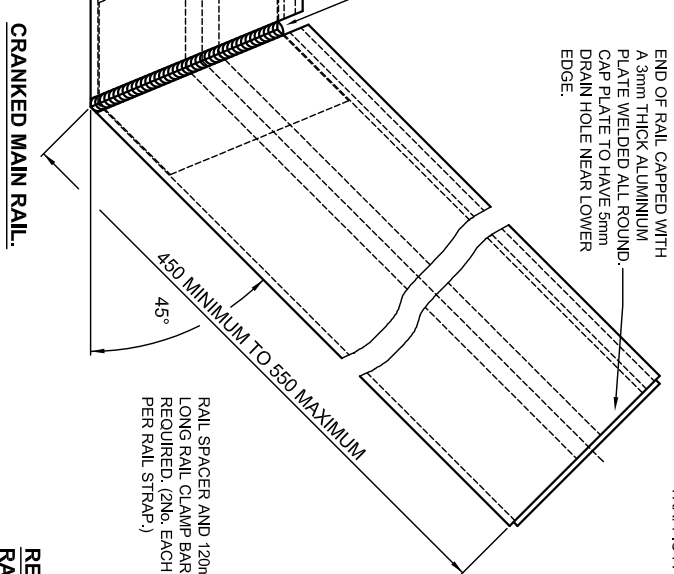
ITEM	SPECIFICATION	ITEM	SPECIFICATION
RAIL CAPS.	ALUMINIUM PLATES / SHEETS ARE TO BE ALUMINIUM ALLOY EN AW5083 O IN ACCORDANCE WITH BS.EN.485-1, BS.EN.485-2, BS.EN.485-3 AND BS.EN.485-4.	BOLTS.	ALL BOLTS / SETSCREWS TO CONFORM TO BS.3692 AND BE STAINLESS STEEL TO BS.EN.ISO.3506-1 GRADE A4/80.
WASHERS BARS TYPE 1 OR TYPE 2.	EXTRUSIONS ARE TO BE ALUMINIUM ALLOY EN AW6063 T6.	NUTS.	ALL NUTS TO CONFORM TO BS.3692 AND BE STAINLESS STEEL TO BS.EN.ISO.3506-2 GRADE A4.
		PLAN WASHERS.	WASHERS TO BE M20 FORM 'B' AND M12 FORM 'A' CONFORMING TO BS.4320 AND BE STAINLESS STEEL TO BS.EN.ISO.3506 GRADE A4 OR A2.

END OF RAIL CAPPED WITH A 3mm THICK ALUMINIUM PLATE WELDED ALL ROUND. CAP PLATE TO HAVE 5mm DRAIN HOLE NEAR LOWER EDGE.



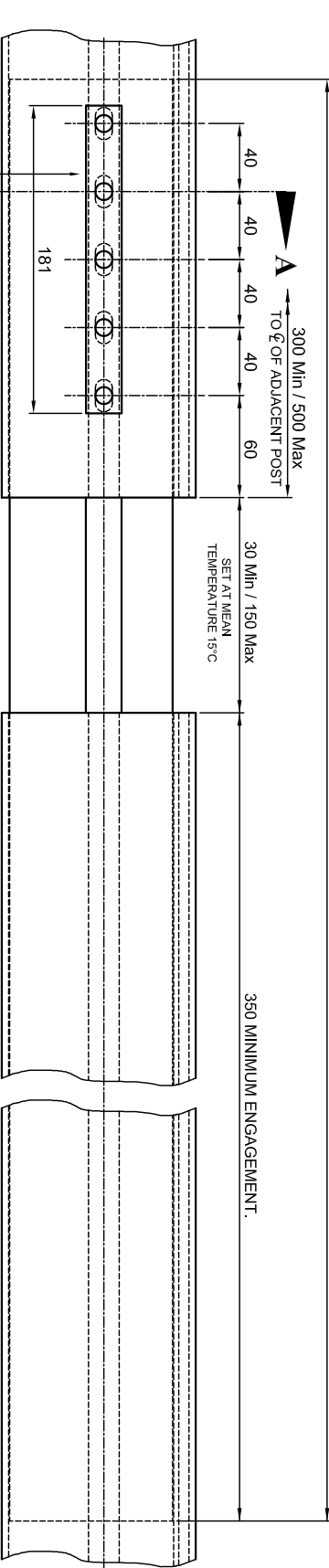
EXPANSION RAIL JOINT TYPE 2 - FOR MOVEMENT RANGE UPTO +/- 25mm.

FULL PENETRATION BUTT WELD ALL ROUND WITH MITRED JOINT SLEEVE BACKING. WELDS LEFT AS LAD.



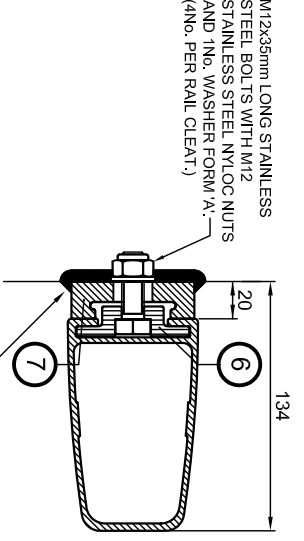
SECTION C-C.

1000 Overall Joint

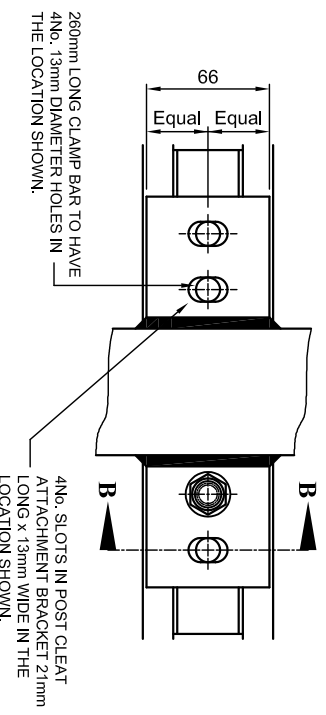


EXPANSION RAIL JOINT TYPE 3 - NO TENSION EXPANSION JOINT FOR MOVEMENT OVER +/- 25mm UPTO +/- 150mm.

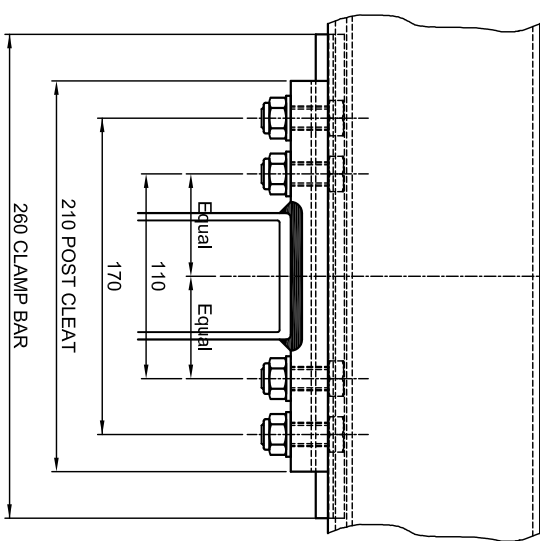
SPECIAL REQUIREMENTS OUTSIDE THE ABOVE PARAMETERS TO BE DETERMINED ON AN INDIVIDUAL CONTRACT BASIS.



SECTION B-B.



REAR VIEW ON POST TO RAIL CLEAT.



PLAN VIEW ON POST TO RAIL FIXINGS.

**GENERAL NOTES.**  
1/ ALL ALUMINIUM WELDING TO BE IN ACCORDANCE WITH BS.EN.1011-4.  
2/ WELDERS AND WELDING PROCEDURES ARE IN ACCORDANCE WITH BS.ENISO.9606-2 AND BS.ENISO.15614-2 RESPECTIVELY.  
3/ FABRICATION TO BE IN ACCORDANCE WITH BS.8118-2.

M12 RAIL TO RAIL RETAINING STRAP FIXINGS TO BE TIGHTENED TO A TORQUE OF 80Nm (60 lb ft).

Rev	Date	By	Description

SECTION SCHEDULE	DESCRIPTION	TOLERANCES
1	MAIN RAIL SECTION 38135	± 2mm
2	RAIL JOINT SECTION 38319	± 1mm
3	POST SECTION 38050	± 0.15
4	CLAMP BAR SECTION 38137	± 0.15
5	WASHER BAR SECTION 118930	± 0.15
6	RAIL CLEAT SECTION 120995	± 0.15
7	RAIL CLEAT SECTION 120995	± 0.15
8	WASHER BAR SECTION 118930	± 0.15

**Varley and Gulliver Ltd.**  
Alfred Street, Sparkbrook, Birmingham B12 8JR  
Tel: 44 (0) 121 773 2441  
Fax: 44 (0) 121 766 6875  
Website: www.v-and-g.co.uk

TITLE	DRAWING NUMBER
STANDARD ARRANGEMENT DRAWINGS OF VGAN 500 SERIES ALUMINIUM PARAPET SYSTEM. RAIL CONNECTIONS DETAILS.	VGAN 500 - 06.