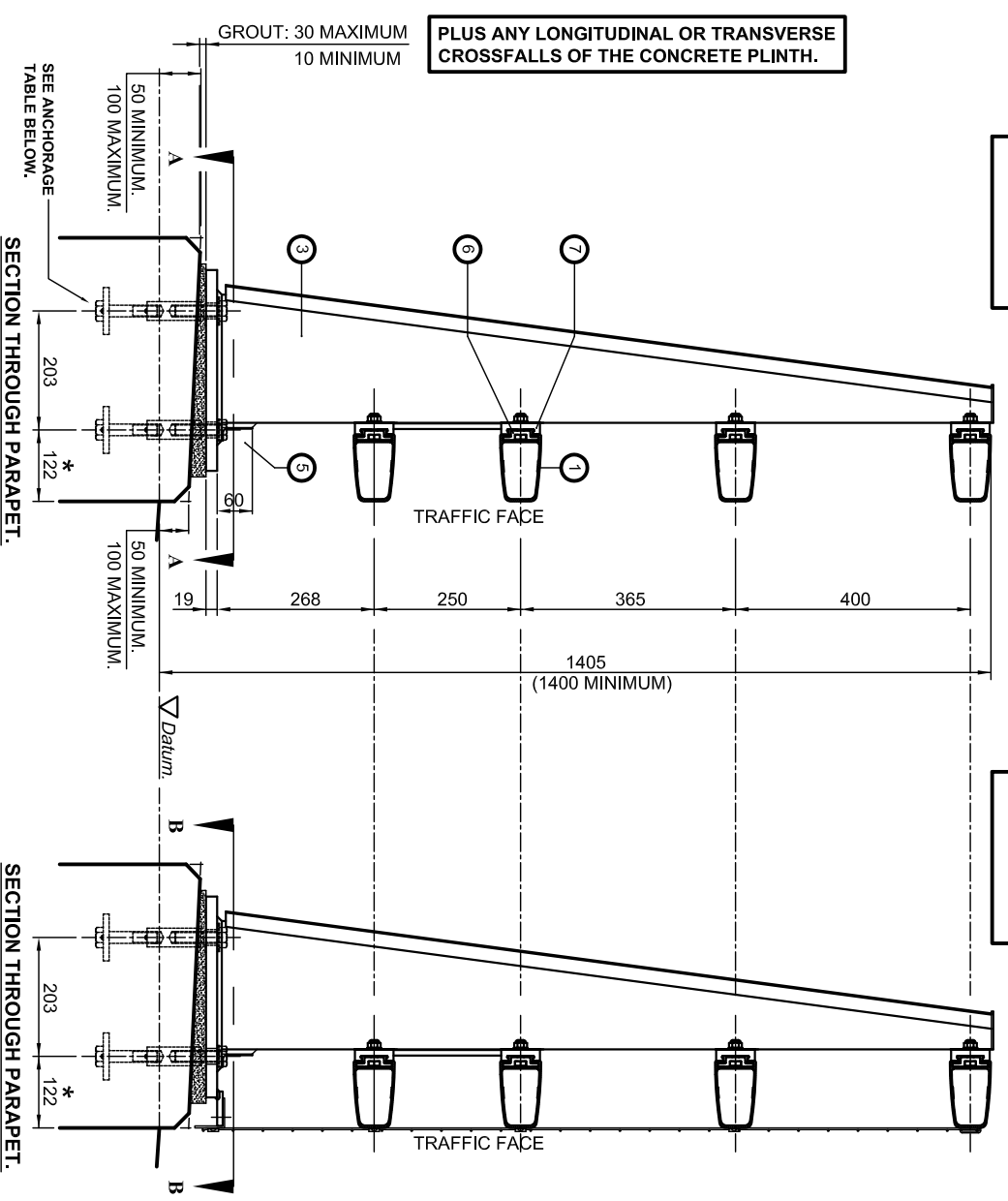


VGAN 505.

VGAN 506.



PLUS ANY LONGITUDINAL OR TRANSVERSE CROSSFALLS OF THE CONCRETE PLINTH.

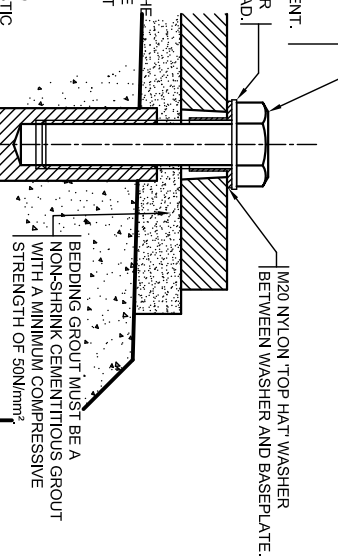
M20 ANTI-TURNING FINISHES TO BE AT THE REAR DEPARTURE POSITION ON THE BASEPLATE AS INDICATED.

SECTION THROUGH PARAPET.

SECTION THROUGH PARAPET.

SECTION A-A.

SECTION B-B.



M20 HOLDING DOWN SETSCREWS / BOLTS TO HAVE A MINIMUM ENGAGEMENT OF 25mm WITH VGAS ANCHORAGES. ANCHORAGE SUPPLIER TO CONFIRM MINIMUM ENGAGEMENT. M20 STAINLESS STEEL WASHER FORM 'B' UNDER THE BOLT HEAD.

M20 NYLON TOP HAT WASHER BETWEEN WASHER AND BASEPLATE.

BEDDING GROUT MUST BE A NON-SHRINK CEMENTITIOUS GROUT WITH A MINIMUM COMPRESSIVE STRENGTH OF 50N/mm².

AFTER THE GROUT HAS HARDENED THE TORQUE TO THE HOLDING DOWN BOLTS MAY BE ADJUSTED AS NECESSARY BUT MUST NOT EXCEED 70Nm.

UNDERSIDE OF BASEPLATE TO RECEIVE 2 COATS OF BITUMASTIC PAINT OR PITCH TO BS.3416. APPLIED TO A SURFACE WHICH HAS BEEN CLEANED AND DEGREASED IN ACCORDANCE WITH BS.8118-2.

ENLARGED VIEW ON HOLDING DOWN BOLT.

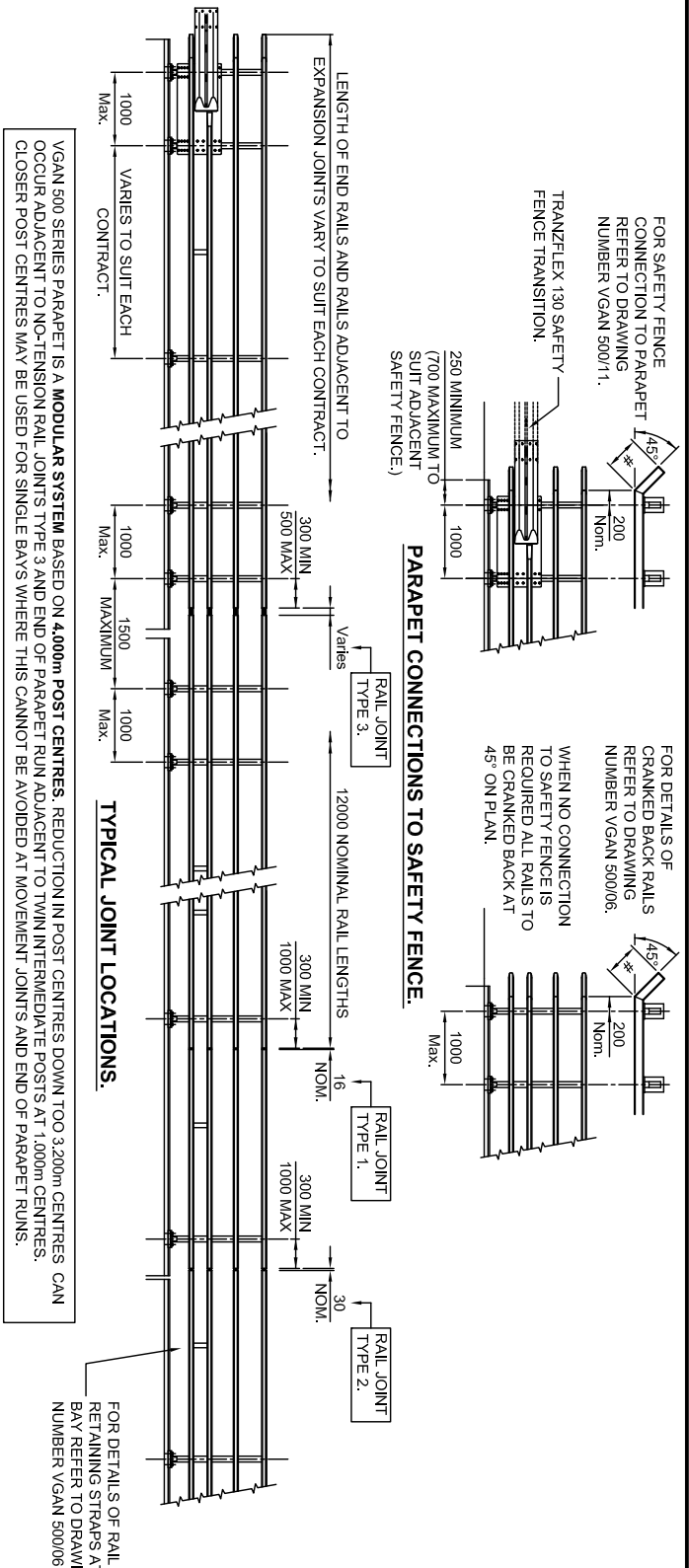
VGAN 500 SERIES POST INFORMATION	
UNFACTORED MOMENT OF RESISTANCE OF POST (kNm) AT UNDERSIDE OF BASEPLATE:	32.51
ULTIMATE SHEAR FORCE RESISTANCE OF POST (kN)	116.4
SIZE OF HOLDING DOWN BOLTS	M20

APPROVED ANCHORAGE UNITS	
DRAWING NUMBER	
VGAS/1.	
VGAS/2.	
VGAS/3.	
OR OTHER APPROPRIATELY APPROVED CAST-IN OR DRILLED ANCHORAGE SYSTEM.	

LIST OF ADDITIONAL REFERENCE DRAWING FOR THE VGAN 500 PARAPETS	
DRAWING NUMBER	TITLE
VGAN 500 / 06.	RAIL CONNECTION DETAIL S.
VGAN 500 / 07.	PARAPET POST DETAILS.
VGAN 500 / 08.	PARAPET MESHING DETAILS.
VGAN 500 / 09.	SHEETING AND MESHING DETAILS OF VGAN 510.
VGAN 500 / 10.	ANTIACCESS PANNELLING.
VGAN 500 / 11.	CONNECTION TO SAFETY FENCE.

VGAN 500 SERIES PARAPET PERFORMANCE	
BS. EN. 1317-1 and BS. EN. 1317-2.	
IMPACT TEST CRITERIA	TB31.
CONTAINMENT LEVEL.	N1.
WORKING WIDTH.	W2. (0.8m)
IMPACT SEVERITY LEVEL.	A.
DYNAMIC DEFLECTION.	0.6m.

ALL DIMENSIONS IN MM. VGAN 500 PARAPET SYSTEM ARE COVERED BY DESIGN RIGHTS AND PATENT PENDING.



TYPICAL JOINT LOCATIONS.

VGAN 505 PARAPET.

VGAN 506 PARAPET.

GENERAL NOTES.

1/ ALL ALUMINIUM WELDING TO BE IN ACCORDANCE WITH BS. EN. 1011-4. WELDERS AND WELDING PROCEDURES ARE IN ACCORDANCE WITH BS. EN. ISO. 9806-2 AND BS. EN. ISO. 15614-2 RESPECTIVELY. TAKE ACCOUNT OF THESE FALLS ARE PERMISSIBLE.

2/ MAIN RAILS CAN BE RADIUS TO SUIT ON SITE DOWN TO MINIMUM RADIUS OF 50 METRES. TIGHTER RADIUS CAN BE SUPPLIED PREFORMED BY SPECIAL ARRANGEMENT.

3/ DIMENSIONS RELATIVE TO HEIGHT DATUM ASSUME THERE IS NO LONGITUDINAL FALL ON THE PLINTH. ADDITIONAL TOLERANCES TO TAKE ACCOUNT OF THESE FALLS ARE PERMISSIBLE.

4/ ALL EXTRUSIONS ARE TO BE ALUMINIUM ALL OY EN AW6082 T6 IN ACCORDANCE WITH BS. EN. 573-4, BS. EN. 573-3, BS. EN. 573-1, BS. EN. 755-2, BS. EN. 755-5, BS. EN. 755-7 AND BS. EN. 755-9. MAIN RAIL TO HAVE AN ADDITIONAL REQUIREMENT OF 10% MINIMUM ELONGATION.

5/ FABRICATION TO BE IN ACCORDANCE WITH BS.8118-2. AN EASILY LEGIBLE IDENTIFICATION PLATE SHALL BE APPLIED AND LOCATED NEAR TO THE TOP OF THE FIRST POST AT EACH APPROACH END IN AN EASILY VISIBLE POSITION.

6/ AN EASILY LEGIBLE IDENTIFICATION PLATE SHALL BE APPLIED AND LOCATED NEAR TO THE TOP OF THE FIRST POST AT EACH APPROACH END IN AN EASILY VISIBLE POSITION.

MATERIAL SPECIFICATION.		
ITEM	SPECIFICATION	ITEM
MAIN RAIL.	ALL EXTRUSIONS ARE TO BE ALUMINIUM ALL OY EN AW6082 T6 IN ACCORDANCE WITH BS. EN. 573-4, BS. EN. 573-3, BS. EN. 573-1, BS. EN. 755-2, BS. EN. 755-5, BS. EN. 755-7 AND BS. EN. 755-9. MAIN RAIL TO HAVE AN ADDITIONAL REQUIREMENT OF 10% MINIMUM ELONGATION.	
RAIL JOINT.	BOLTS.	ALL BOLTS / SETPINS TO CONFORM TO BS. 3692 AND BE STAINLESS STEEL TO BS. EN. ISO. 3506-4 GRADE A4-80.
POST SECTION.	NUTS.	ALL NUTS TO CONFORM TO BS. 3692 AND BE STAINLESS STEEL TO BS. EN. ISO. 3506-2 GRADE A4.
BASEPLATE.	PLAIN WASHERS.	WASHERS TO BE M20 FORM 'B' AND M12 FORM 'A'. CONFORMING TO BS. 4320 AND BE STAINLESS STEEL TO BS. EN. ISO. 3506 GRADE A4 OR A2.
POST GUSSET.		
RAIL CLAMP BAR.		
RAIL CLEAT.		

SECTION SCHEDULE		TOLERANCES AS SHOWN UNLESS STATED OTHERWISE.	
1	MAIN RAIL SECTION 38195	DIMENSIONS:	TOLERANCES:
2	RAIL JOINT SECTION 38319	GREATER THAN 1000mm.	± 2mm
3	POST SECTION 38639	LESS THAN 1000mm.	± 1mm
4	BASEPLATE SECTION 129005	ANGULAR DIMENSIONS:	± 0°15'
5	GUSSET SECTION 120501	NOTE: ALL ACCUMULATIVE TOLERANCES ARE TO BE CONTAINED WITHIN THE OVERALL TOLERANCE.	
6	CLAMP BAR SECTION 38137	SITE ERECTION TOLERANCES:	
7	RAIL CLEAT SECTION 120095	WILL VARY TO SUIT SITE CONDITIONS.	

ALL STANDARDS QUOTED ARE DEEMED CURRENT AT THE DATE THE DRAWING IS ISSUED FOR APPROVAL, UNLESS OTHERWISE STATED.

THIS DRAWING TO BE USED ONLY WITH W/O No.

DRAWING TO BE RETURNED TO DRAWING OFFICE ON COMPLETION OF WORK.

Varley and Gulliver Ltd.
 Alfred Street, Sparkbrook, Birmingham B12 8JR
 Tel: 44 (0) 121 773 2441
 Fax: 44 (0) 121 766 6875
 Website: www.v-and-g.co.uk

TITLE: STANDARD ARRANGEMENT DRAWINGS OF VGAN 500 SERIES ALUMINIUM PARAPET SYSTEM. VGAN 505 and VGAN 506.

DRAWING NUMBER: VGAN 500 - 03.C.