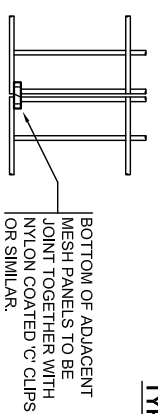


TYPICAL ELEVATION ON VGAH 2002 PARAPET SHOWING MESHING DETAILS.

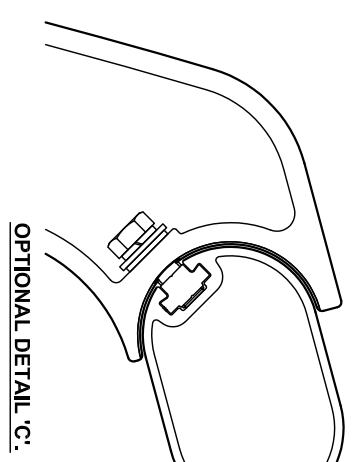
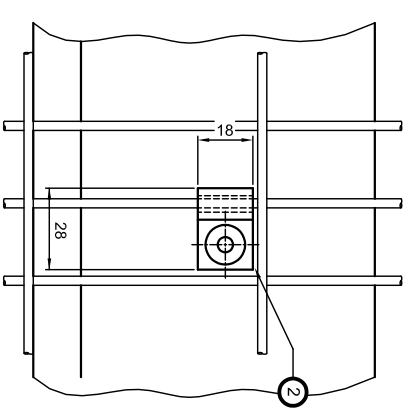
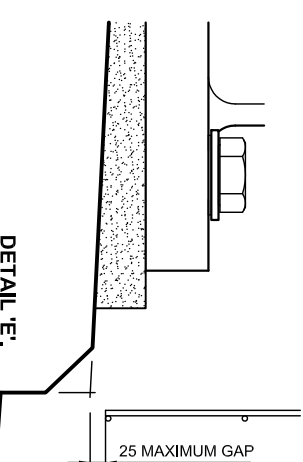
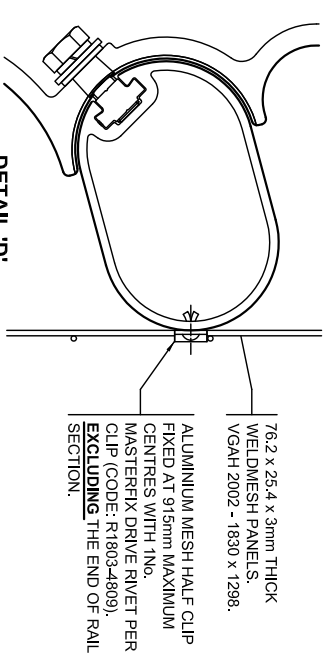
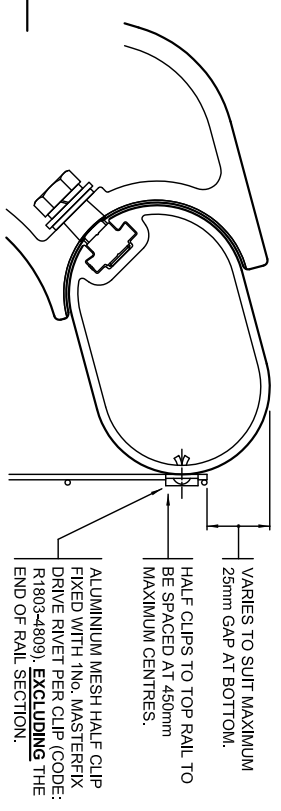


DETAIL B.  
ELEVATION ON 'C' CLIP.

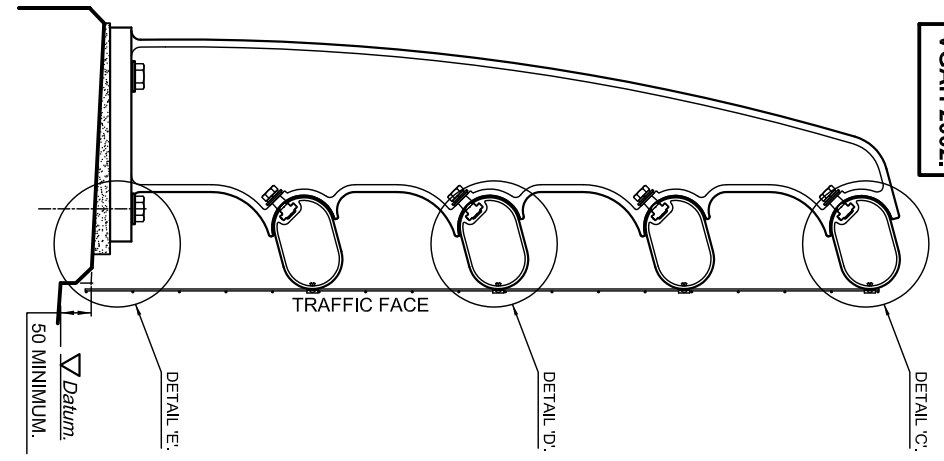
**SPECIAL FIXING NOTE:**

- ANY MESH FIXING WITHIN THE 380mm LENGTH OF THE RAIL END TO BE FIXED WITH THE FOLLOWING:
- MESH CLIPS - 6x5x8mm LONG DOME SOCKET HEAD STAINLESS STEEL SETSCREWS GRADE A2.
  - OPTIONAL TOP FLASHING - 6x5x16mm LONG DOME SOCKET HEAD STAINLESS STEEL SETSCREWS GRADE A2.
  - VERTICAL END FLASHING - STAINLESS STEEL DOME SOCKET HEAD SETSCREWS GRADE A2. 6x5x16mm LONG FOR ALL RAIL FIXINGS. AT ALL OTHER LOCATIONS THE APPROPRIATE DRIVE RIVETS ARE TO BE UTILISED.

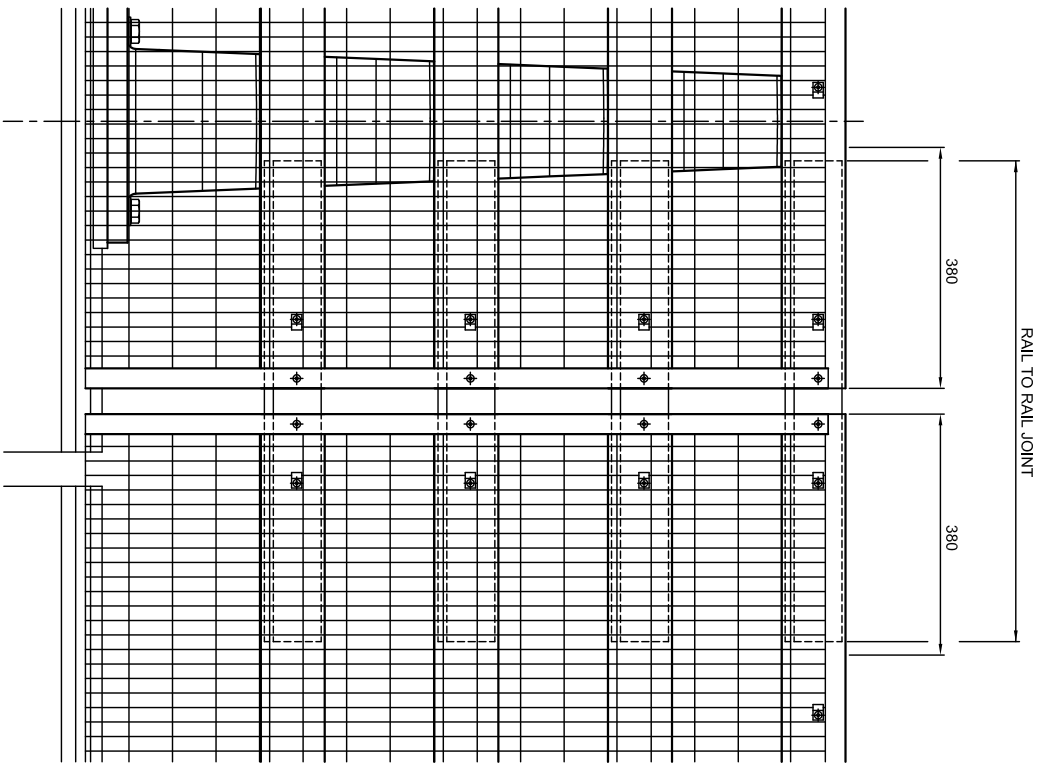
| SYSTEM     | REQUIREMENTS                          | NOTES  |
|------------|---------------------------------------|--|
| VGAH 2002. | HALF CLIP MESHING SYSTEM.             | TOP RAIL CLIPS ARE TO BE SPACED AT MAXIMUM LONGITUDINAL CENTRES OF 450mm. MIDDLE AND BOTTOM RAIL CLIPS TO BE SPACED AT MAXIMUM LONGITUDINAL CENTRES OF 915mm.                          |
| VGAH 2002. | OPTIONAL TOP FLASHING MESHING SYSTEM. | 3.0m LONG TOP RAIL FLASHING STRIP TO HAVE FIXINGS SPACED AT MAXIMUM LONGITUDINAL CENTRES OF 203mm. MIDDLE AND BOTTOM RAIL CLIPS TO BE SPACED AT MAXIMUM LONGITUDINAL CENTRES OF 915mm. |



OPTIONAL ALUMINIUM TOP FLASHING SUPPLIED IN 3.000m LENGTHS FIXED WITH MASTERFIX DRIVE RIVETS (CODE: R1803-4816) AT MAXIMUM 203 CENTRES. 16No. FIXINGS PER 3.000m LENGTH, EXCLUDING THE END OF RAIL SECTION.



SECTION A-A FOR VGAH 2002 PARAPET.



ENLARGED VIEW AT RAIL TO RAIL JOINTS.

| ITEM                         | SPECIFICATION  | ITEM        | SPECIFICATION   |
|------------------------------|--|-------------|---|
| TOP FLASHING AND MESH CLIPS. | ALL EXTRUSIONS ARE TO BE ALUMINIUM ALLOY EN AW6082 T6.   | RIVETS.     | ALL RIVETS TO BE ALUMINIUM MASTERFIX DRIVE RIVETS CODE: R1803-4816 OR R1803-4809 OR SIMILAR APPROVED. |
| WELDMESH PANELS.             | STANDARD WELDMESH PANELS WITH 76.2 x 25.4 CENTRES x 3.0mm THICK WIRE TO ONE OF THE FOLLOWING SPECIFICATIONS:<br>1). CARBON STEEL WIRE HOT DIPPED GALVANISED TO BS EN ISO 1461 OR BY AN ALTERNATIVE METHOD SPECIFIED BY THE ENGINEER.<br>2). STAINLESS STEEL WIRE TO GRADE 304SS31, 316SS31 OR TO AN ALTERNATIVE SPECIFIED BY THE ENGINEER. | SET SCREWS. | 6x5x8mm AND 16mm LONG DOME SOCKET HEAD SET SCREWS TO BE STAINLESS STEEL GRADE A2 OR SIMILAR APPROVED. |

ELEVATION ON MESH HALF CLIP.

**MATERIAL SPECIFICATION.**

ALL DIMENSIONS IN MM.

|   |  |
|---|--|
| <p>Alfred Street, Sparkbrook, Birmingham B12 8JR<br/>Tel: 44 (0) 121 773 2441<br/>Fax: 44 (0) 121 766 6875<br/>Website: www.v-and-g.co.uk</p> |  |
| TITLE   | STANDARD ARRANGEMENT DRAWINGS OF VGAH 2000 SERIES ALUMINIUM PARAPET SYSTEM. VGAH 2001. |
| DRAWING NUMBER  | VGAH 2000 - 04.  |

| Rev | Date | By | Description |
|-----|------|----|-------------|
|     |      |    |             |

**MANUFACTURING TOLERANCES.**  
TOLERANCES AS SHOWN UNLESS STATED OTHERWISE.  
DIMENSIONS: TOLERANCES:  
GREATER THAN + 2mm  
1000mm.  
LESS THAN + 1mm  
1000mm.  
ANGULAR DIMENSIONS: + 0°15'

NOTE: ALL ACCUMULATIVE TOLERANCES ARE TO BE CONTAINED WITHIN THE OVERALL TOLERANCE.

**SITE ERECTION TOLERANCES.**  
WILL VARY TO SUIT SITE CONDITIONS.  
ALL STANDARDS QUOTED ARE DEEMED CURRENT AT THE DATE THE DRAWING IS ISSUED FOR APPROVAL, UNLESS OTHERWISE STATED.

THIS DRAWING TO BE USED ONLY WITH W/O No. DRAWING TO BE RETURNED TO DRAWING OFFICE ON COMPLETION OF WORK.