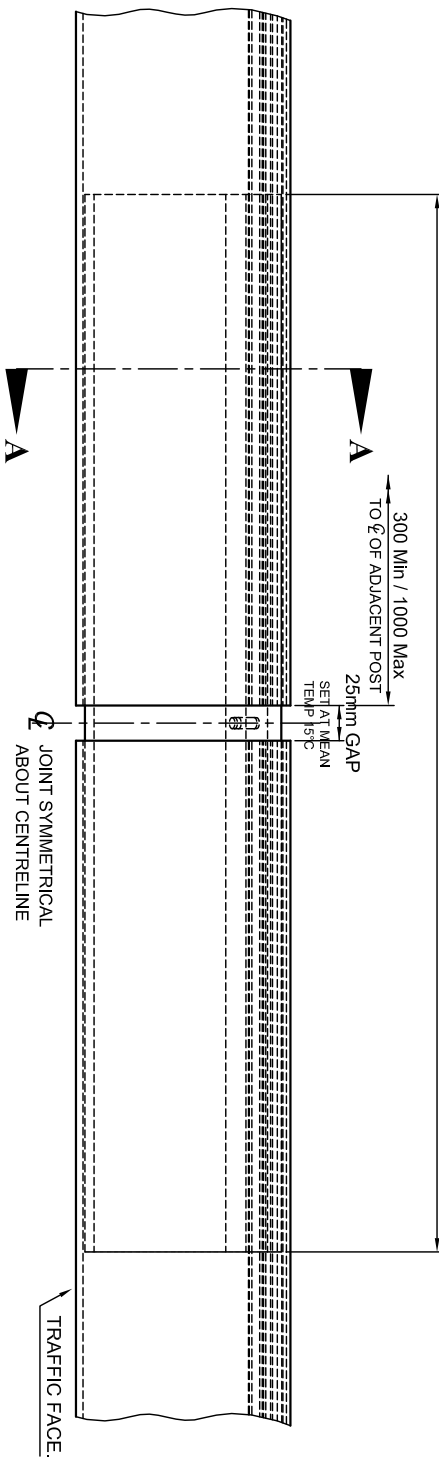
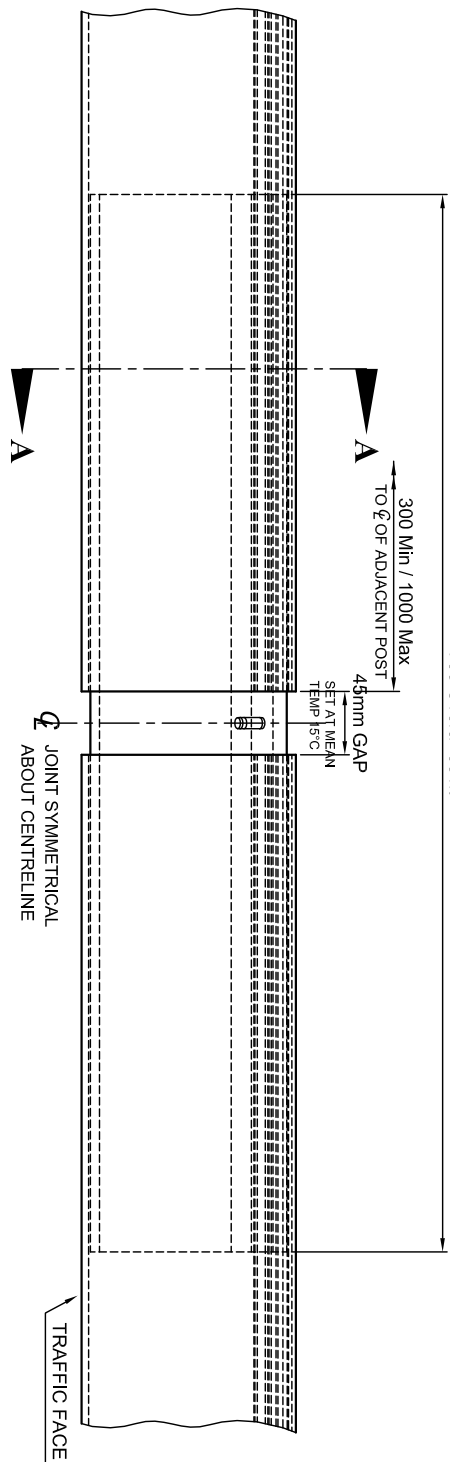


750 Overall Joint



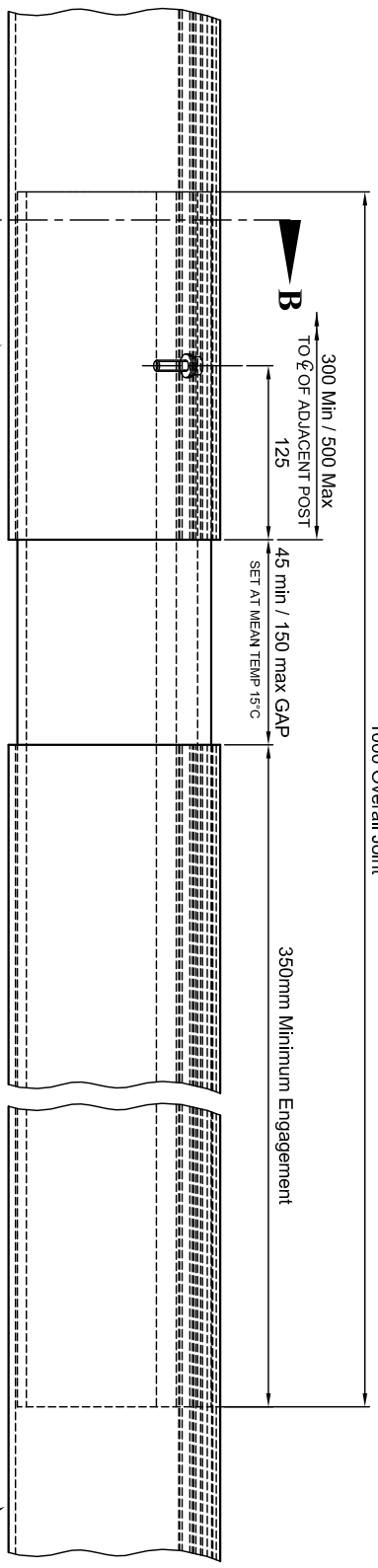
STANDARD RAIL JOINT TYPE 1.

750 Overall Joint



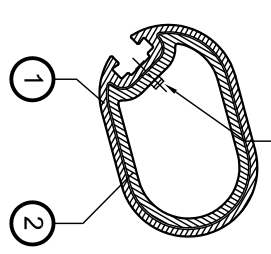
EXPANSION RAIL JOINT TYPE 2 - FOR MOVEMENT RANGE UPTO +/- 25mm.

1000 Overall Joint



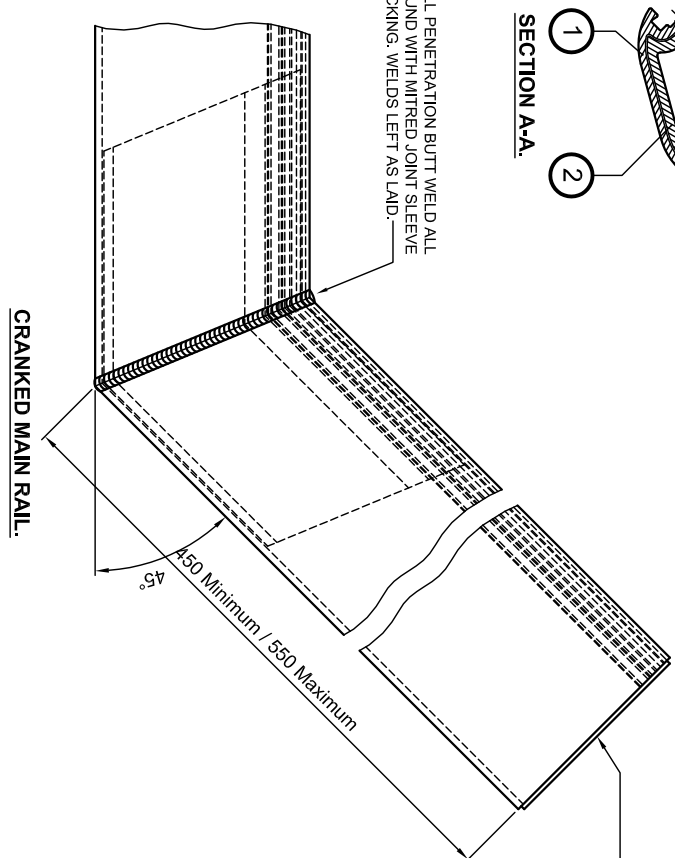
EXPANSION RAIL JOINT TYPE 3 - NO TENSION EXPANSION JOINT FOR MOVEMENT OVER +/- 25mm UPTO +/- 150mm.

1No. STANDARD COILED SPRING PIN ref: CLDP8x20MDK INSTALL ED CENTRALLY IN RAIL JOINT SECTION WITH 10mm EXTENDING OUT OF SECTION.



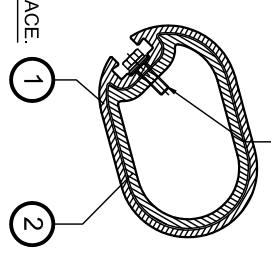
SECTION A-A.

FULL PENETRATION BUTT WELD ALL ROUND WITH MITRED JOINT SLEEVE BACKING. WELDS LEFT AS LAD.



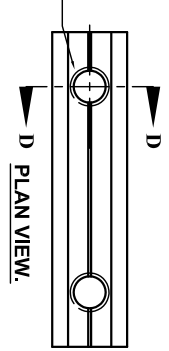
CRANKED MAIN RAIL.

1No. M8x30mm LONG HEXAGONAL HEAD STAINLESS STEEL SET PINS WITH M8 FLAT WASHER FORM 'A', M8 SPRING WASHER TYPE 'B' AND M8 NYLON FLAT WASHER.

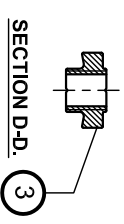


SECTION B-B.

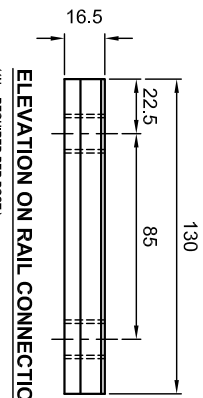
RAIL CONNECTION NUT TO BE DRILLED AND TAPPED CENTRALLY FOR TWO M16 CONNECTION FIXINGS.



PLAN VIEW.



SECTION D-D.



ELEVATION ON RAIL CONNECTION NUT. (4x4, REQUIRED PER POST.)

MATERIAL SPECIFICATION.			
ITEM	SPECIFICATION	ITEM	SPECIFICATION
RAIL CAPS.	ALUMINIUM PLATES / SHEETS ARE TO BE ALUMINIUM ALLOY EN AW5083 O IN ACCORDANCE WITH BS.EN.485-1, BS.EN.485-2, BS.EN.485-3 AND BS.EN.485-4.	BOLTS.	ALL BOLTS / SETPINS TO CONFORM TO BS.3692 AND BE STAINLESS STEEL TO BS.EN.ISO.3506-1 GRADE A4/8.0.
STANDARD COILED SPRING PINS.	STANDARD COILED SPRING PINS IN STAINLESS STEEL TO BS.EN.ISO.8750.	NUTS.	ALL NUTS TO CONFORM TO BS.3692 AND BE STAINLESS STEEL TO BS.EN.ISO.3506-2 GRADE A4.
		PLAIN WASHERS.	WASHERS TO BE M24 FORM 'B' AND M16 FORM 'C' CONFORMING TO BS.4320 AND BE STAINLESS STEEL TO BS.EN.ISO.3506 GRADE A4 OR A2.

END OF RAIL CAPPED WITH A 3mm THICK ALUMINIUM PLATE WELDED ALL ROUND. GAP PLATE TO HAVE 5mm DRAIN HOLE NEAR LOWER EDGE.

- GENERAL NOTES.**
- 1/ ALL ALUMINIUM WELDING TO BE IN ACCORDANCE WITH BS.EN.1011-4.
  - 2/ WELDERS AND WELDING PROCEDURES ARE IN ACCORDANCE WITH BS.EN.ISO.9806-2 AND BS.EN.ISO.15614-2 RESPECTIVELY.
  - 3/ FABRICATION TO BE IN ACCORDANCE WITH BS.8118-2.

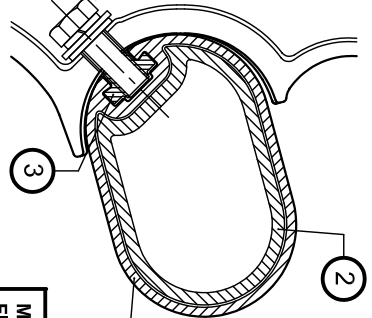
Rev	Date	By	Description

MANUFACTURING TOLERANCES.	TOLERANCES.
GREATER THAN 1000mm.	+ 2mm
LESS THAN 1000mm.	+ 1mm
ANGULAR DIMENSIONS.	+ 0°15'

SECTION SCHEDULE	SECTION	DESCRIPTION
1	MAIN RAIL SECTION 110931	
2	RAIL JOINT SECTION 110932	
3	RAIL CONNECTION NUT SECTION 110933	

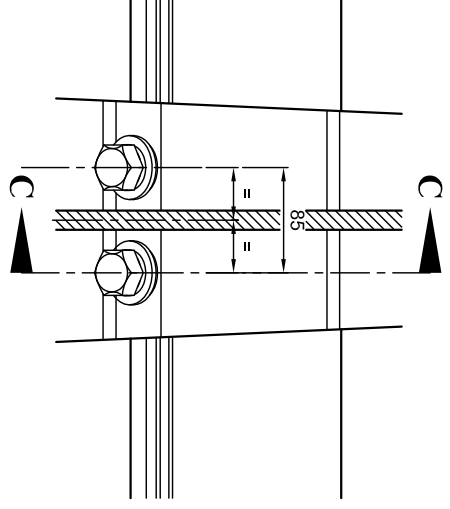
W/O No. THIS DRAWING TO BE USED ONLY WITH DRAWING TO BE RETURNED TO DRAWING OFFICE ON COMPLETION OF WORK.

M16x45mm LONG STAINLESS STEEL SETPINS WITH M16 STAINLESS STEEL FLAT WASHER FORM 'C', M16 STAINLESS STEEL SPRING WASHER TYPE 'B' AND M16 FLAT NYLON WASHER. (2No. PER POST TO RAIL CONNECTION).



SECTION C-C.

M16 POST TO RAIL FIXINGS TO BE TIGHTENED TO A TORQUE OF 40Nm (30 lb ft).



REAR VIEW ON POST TO RAIL CLEAT.

COPYRIGHT © JANUARY 2015. VARLEY AND GULLIVER LIMITED.

VGAH 2000 PARAPET SYSTEMS ARE COVERED BY DESIGN RIGHTS AND PATENT PENDING.

ALL DIMENSIONS IN MM.

**Varley and Gulliver Ltd.**  
 Alfred Street, Sparkbrook, Birmingham B12 8JR  
 Tel: 44 (0) 121 773 2441  
 Fax: 44 (0) 121 766 6875  
 Website: www.v-and-g.co.uk

TITLE: STANDARD ARRANGEMENT DRAWINGS OF VGAH 2000 SERIES ALUMINIUM PARAPET SYSTEM. VGAH 2001.

DRAWING NUMBER: VGAH 2000-02.