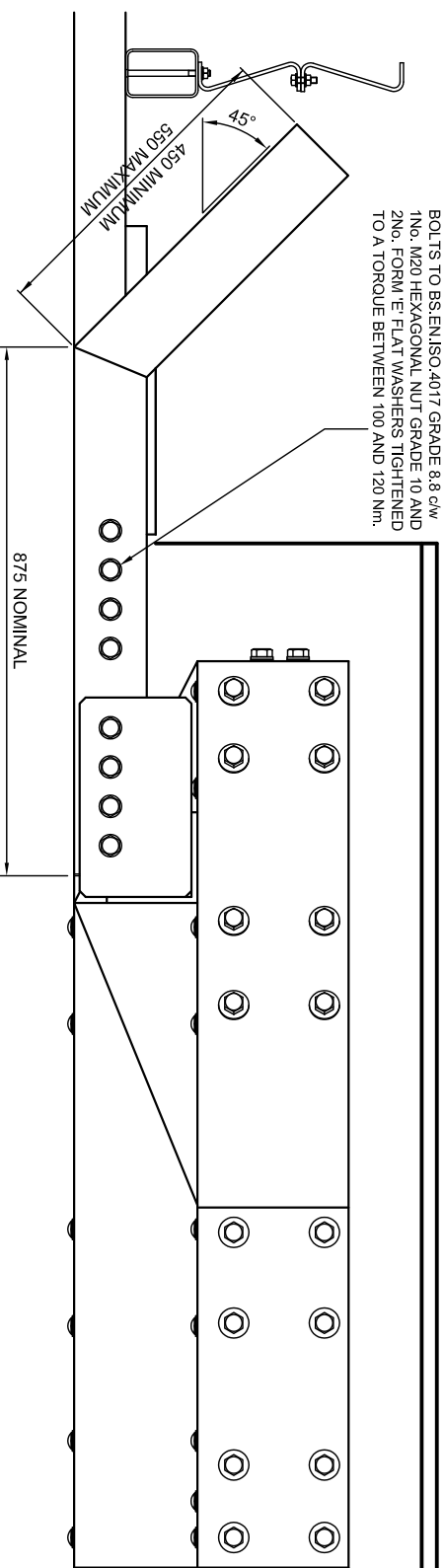
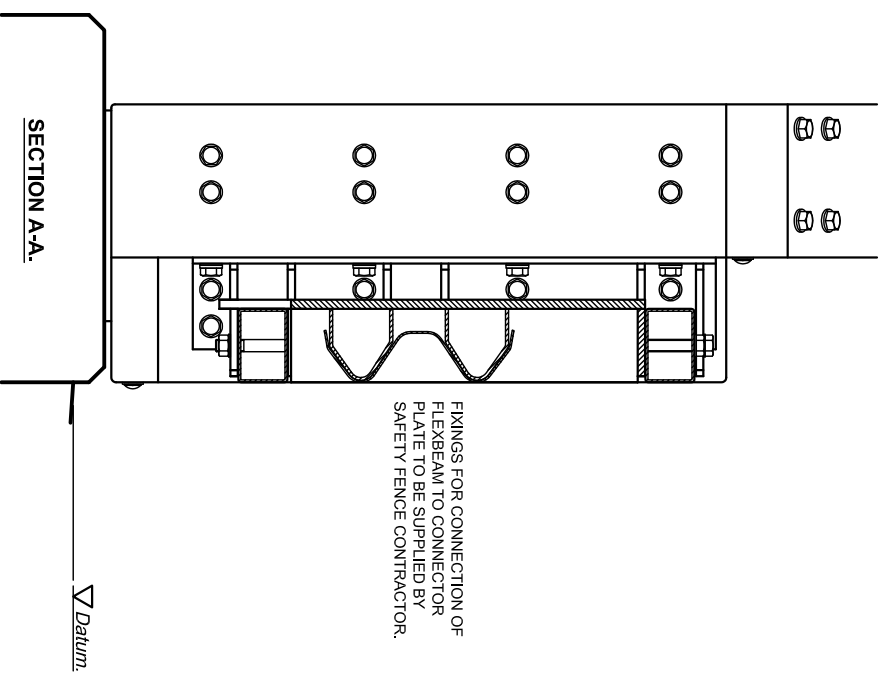


SAFETY FENCE CONNECTOR ATTACHED TO 120x80 MAIN RAILS AND V6Guard CONNECTION PLATE WITH M20x140 LONG HEXAGONAL HEAD GALVANISED STEEL BOLTS TO BS.EN.10025 GRADE 8.8 c/w 1No. M20 HEXAGONAL NUT GRADE 10 AND 2No. FORM 'E' FLAT WASHERS TIGHTENED TO A TORQUE BETWEEN 100 AND 120 Nm.



PLAN VIEW.



SECTION A-A.

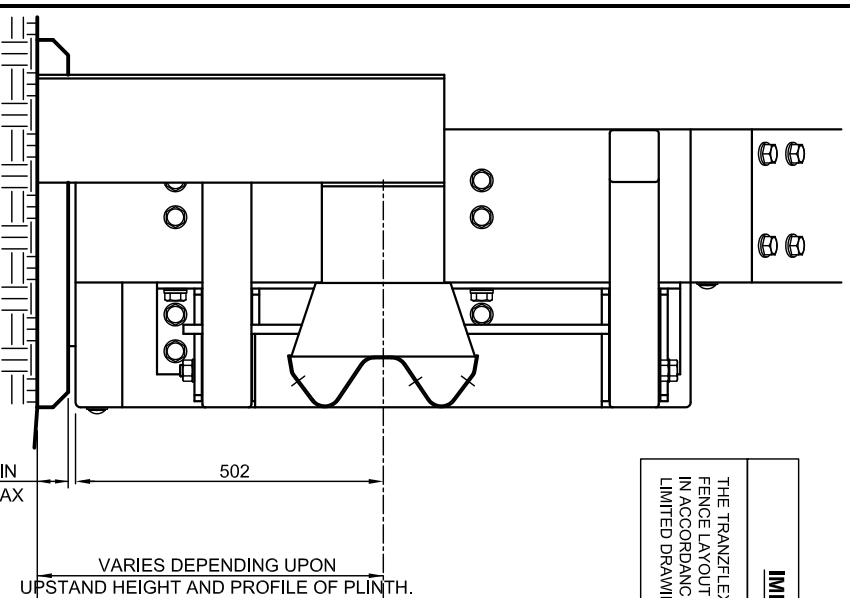
TRANZFLEX 160 COMPONENTS TO BE SUPPLIED AND FITTED BY OTHERS.

FIXINGS FOR CONNECTION OF FLEXBEAM TO CONNECTOR PLATE TO BE SUPPLIED BY SAFETY FENCE CONTRACTOR.

▽ Datum.

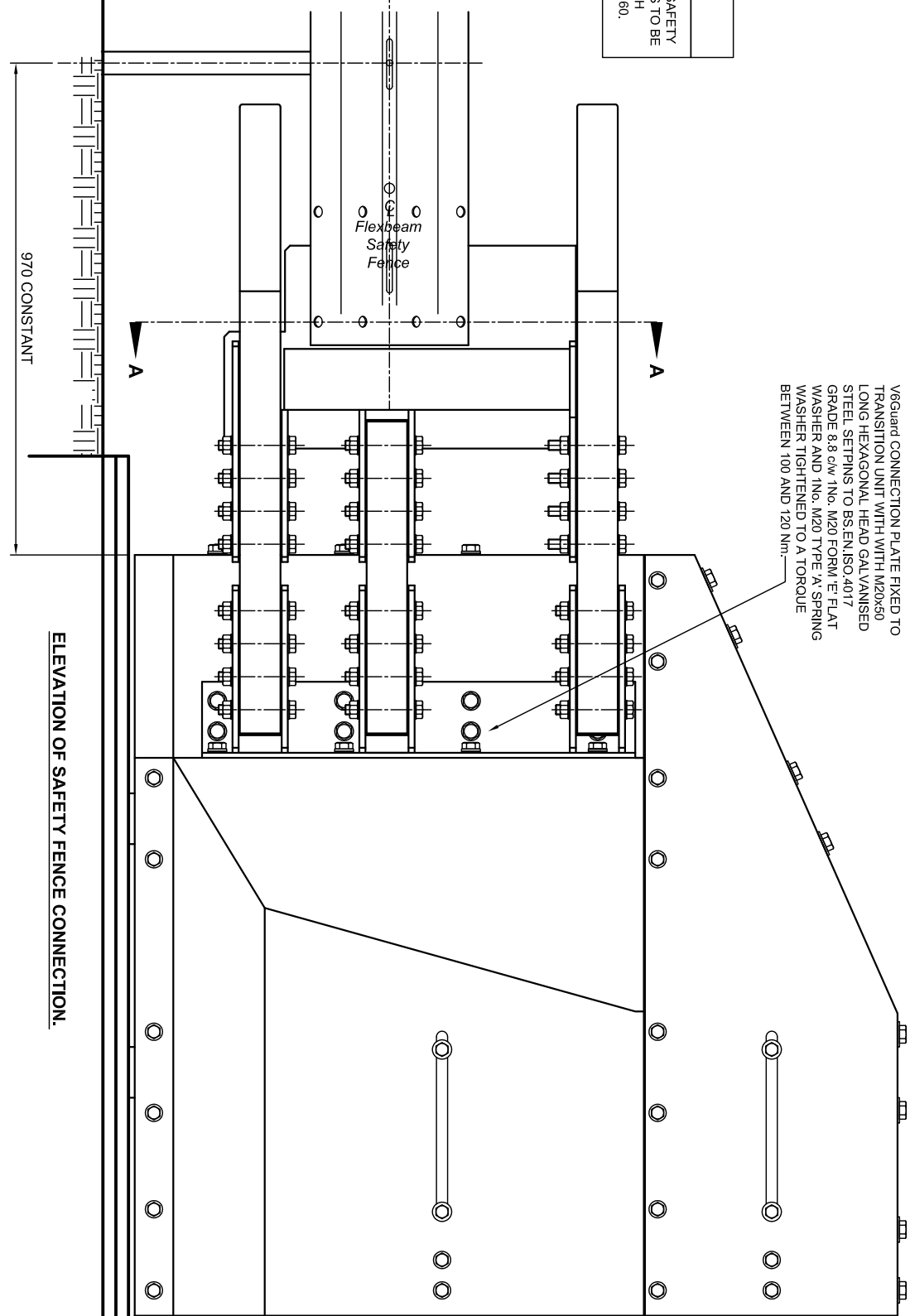
IMPORTANT.

THE TRANZFLEX 160 TRANSITION SAFETY FENCE LAYOUT AND COMPONENTS TO BE IN ACCORDANCE WITH HILL & SMITH LIMITED DRAWING NUMBER FBGA160.



VARIABLES VARY UPON UPSTAND HEIGHT AND PROFILE OF PLINTH.

▽ Datum.



V6Guard CONNECTION PLATE FIXED TO TRANSITION UNIT WITH WITH M20x30 LONG HEXAGONAL HEAD GALVANISED STEEL SETPINS TO BS.EN.ISO.4017 GRADE 8.8 c/w 1No. M20 FORM 'E' FLAT WASHER AND 1No. M20 TYPE 'A' SPRING WASHER TIGHTENED TO A TORQUE BETWEEN 100 AND 120 Nm.

ELEVATION OF SAFETY FENCE CONNECTION.

970 CONSTANT

END ELEVATION OF SAFETY FENCE CONNECTION.

NOTES:

- 1/ TO BE READ IN CONJUNCTION WITH HILL & SMITH LIMITED DRAWING NUMBER FBGA160.
- 2/ TRANZFLEX 160 CONNECTION BEAM TO BE STEEL TO BS.EN.10025 GRADE S275. ALL TO BE HOT DIPPED GALVANISED TO BS.EN.ISO.1461 AFTER FABRICATION.
- 3/ REFER TO DRAWING NUMBER V6Guard - 05 FOR ADDITIONAL ITEM DETAILS.

02	May 13	dmc	MINOR AMENDMENTS.
01	Mar 09	dmc	MINOR AMENDMENTS.

Rev	Date	By	Description
-----	------	----	-------------

MANUFACTURING TOLERANCES.	
TOLERANCES AS SHOWN UNLESS STATED OTHERWISE.	
DIMENSIONS.	TOLERANCES.
GREATER THAN 1000mm.	+ 2mm
LESS THAN 1000mm.	+ 1mm
ANGULAR DIMENSIONS.	+ 0°15'

NOTE: ALL ACCUMULATIVE TOLERANCES ARE TO BE CONTAINED WITHIN THE OVERALL TOLERANCE.

SITE ERECTION TOLERANCES.
WILL VARY TO SUIT SITE CONDITIONS.

ALL STANDARDS QUOTED ARE DEEMED CURRENT AT THE DATE THE DRAWING IS ISSUED FOR APPROVAL, UNLESS OTHERWISE STATED.

THIS DRAWING TO BE USED ONLY WITH W/O No. DRAWING TO BE RETURNED TO DRAWING OFFICE ON COMPLETION OF WORK

SCALE	DATE	01/06/2007.
DRAWN	CHK	D.V.C.

Varley and Gulliver Ltd.
Alfred Street, Sparkbrook, Birmingham B12 8JR
Tel: 44 (0) 121 773 2441
Fax: 44 (0) 121 766 6875
Website: www.v-and-g.co.uk

TITLE STANDARD ARRANGEMENT DRAWINGS OF V6Guard SERIES STEEL PARAPET SYSTEM. CONNECTION TO TRANZFLEX 160 TRANSITION SAFETY FENCE.
DRAWING NUMBER V6Guard - 04-02.