

TYPICAL JOINT LOCATIONS.

- GENERAL NOTES.**
1. ALL STEEL WELDING TO BE IN ACCORDANCE WITH BS.EN.1011-1 AND BS.EN.1011-2.
 2. WELDERS AND WELDING PROCEDURES ARE IN ACCORDANCE WITH BS.EN.287-1 AND BS.ENISO.15607 RESPECTIVELY.
 3. PANELS CAN BE FACETTED TO SUIT ON SITE DOWN TO MINIMUM RADII OF 300 metres.
 4. DIMENSIONS RELATIVE TO HEIGHT DATUM ASSUME THERE IS NO LONGITUDINAL FALL ON THE PLINTH; ADDITIONAL TOLERANCES TO TAKE ACCOUNT OF THESE FALLS ARE PERMISSIBLE.
 5. AN EASILY LEGIBLE IDENTIFICATION PLATE SHALL BE APPLIED AND LOCATED NEAR TO THE TOP OF THE FIRST PANEL AT EACH APPROACH END IN AN EASILY VISIBLE POSITION.

LIST OF ADDITIONAL REFERENCE DRAWING FOR THE V6Guard PARAPETS

DRAWING NUMBER	TITLE
V6Guard / 02.	PARAPET ASSEMBLY DETAILS.
V6Guard / 03.	PARAPET CONNECTION DETAILS.
V6Guard / 04.	PARAPET CONNECTION / TRANSITION DETAILS.
V6Guard / 05.	PARAPET CONNECTION / TRANSITION DETAILS.
V6Guard / 06.	COPING PANEL DETAILS.
V6Guard / 07.	ANTI-ACCESS PANEL DETAILS.

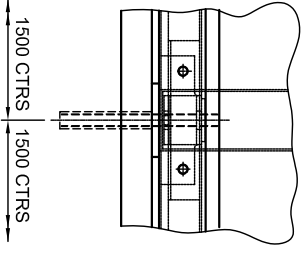
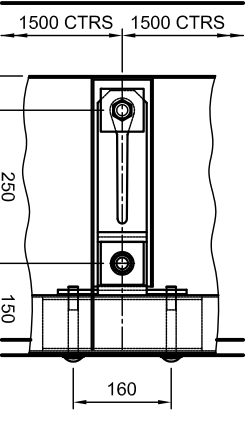
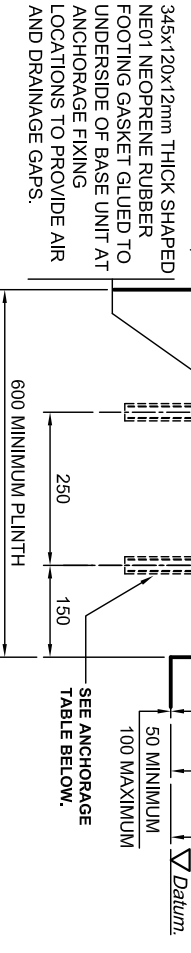
V6Guard PARAPET PERFORMANCE.

BS.EN.1317-1 and BS.EN.1317-2.	IMPACT TEST CRITERIA.	TB11 and TB71.
	CONTAINMENT LEVEL.	H4a.
	WORKING WIDTH.	W3. (1.0m).
	IMPACT SEVERITY LEVEL.	B.
	DYNAMIC DEFLECTION.	0.8m.

MATERIAL SPECIFICATION.

ITEM	SPECIFICATION	ITEM	SPECIFICATION
BACK PANELS.	ALL STEEL SECTIONS ARE TO BE IN ACCORDANCE WITH BS.EN.10025-1, BS.EN.10025-2, BS.EN.10219-1, BS.EN.10219-2.	BOLTS.	HOLDING DOWN SETSCREWS TO CONFORM TO BS.3692 AND BE STAINLESS STEEL TO BS.ENISO.3506-1 GRADE A4-80. ALL OTHER BOLTS / SETSCREWS TO BE GALVANISED STEEL TO CONFORM TO BS.3692 AND BS.ENISO.4014 OR 4017 GRADE 8.8.
FRONT PANELS.	ALL STEEL SECTIONS ARE TO BE IN ACCORDANCE WITH BS.EN.10025-1, BS.EN.10025-2, BS.EN.10219-1, BS.EN.10219-2.	NUTS.	ALL NUTS TO BE GALVANISED STEEL TO CONFORM TO BS.3692 AND BS.ENISO. 4032 GRADE 8.
CHANNEL SECTION.	DIAPHRAGMS, CHANNELS, PANELS, CHANNELS.	WASHERS.	GALVANISED PLAIN WASHERS TO BE M20x50 o/dia. x 4mm THICK. M20 FORM 'E'. M16x38 o/dia. x 3.2mm THICK CONFORMING TO BS.4320.
DIAPHRAGM.	DIAPHRAGMS, JOINTS AND ANGLES TO BE GRADE S275J0. SHS TO BE GRADE S275J2H.	GALVANISED SPRING WASHERS TO BE TYPE 'A' TO BS.4464.	
JOINT PLATES			
CONNECTION ANGLE.			

SECTION THROUGH PARAPET.



APPROVED ANCHORAGE UNITS

DRAWING NUMBER	UNFACTORED MOMENT OF RESISTANCE OF POST (kNm) AT UNDERSIDE OF BASEPLATE.
VGAS15.	30.0
VGAS16.	140.3

OR OTHER APPROPRIATELY APPROVED CAST-IRON OR DRILLED ANCHORAGE SYSTEM.

V6Guard DESIGN INFORMATION

DRAWING NUMBER	UNFACTORED MOMENT OF RESISTANCE OF POST (kNm) AT UNDERSIDE OF BASEPLATE.
VGAS15.	30.0
VGAS16.	140.3

OR OTHER APPROPRIATELY APPROVED CAST-IRON OR DRILLED ANCHORAGE SYSTEM.

SCALE	DATE
P.G.H.	01/06/2007.

W/O No.	DATE

Varley and Gulliver Ltd.
 Alfred Street, Sparkbrook, Birmingham B12 8JR
 Tel: 44 (0) 121 773 2441
 Fax: 44 (0) 121 766 6875
 Website: www.v-and-g.co.uk

TITLE	DRAWING NUMBER
STANDARD ARRANGEMENT DRAWINGS OF V6Guard SERIES STEEL PARAPET SYSTEM. GENERAL DETAILS.	V6Guard - 01-02.