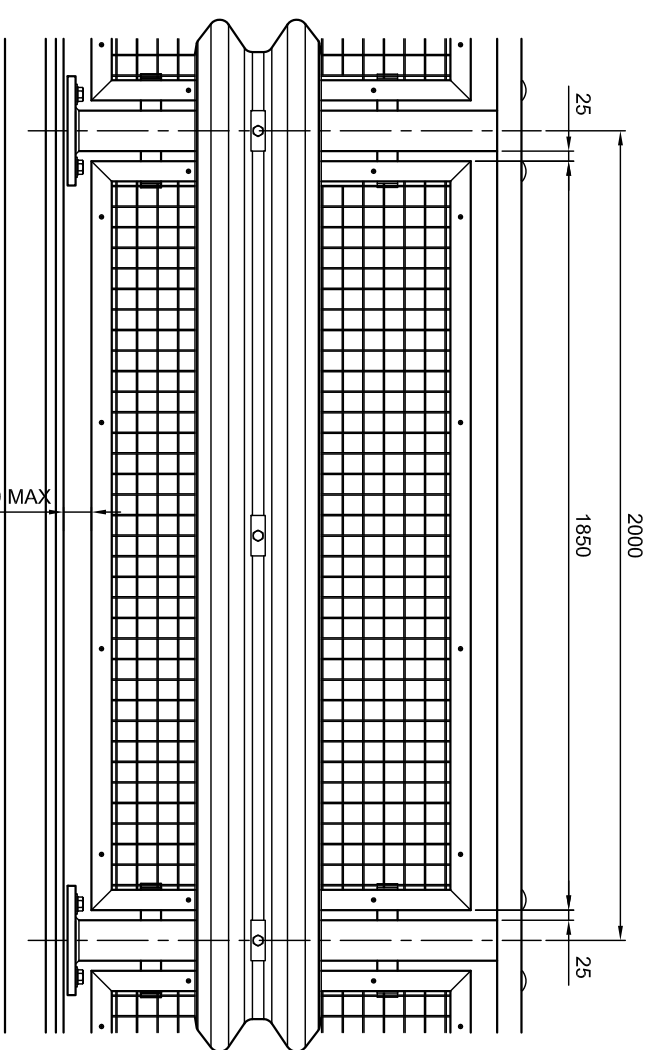
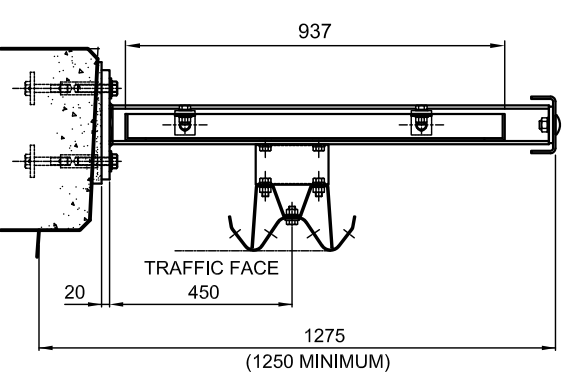


MESH INFILL PANELS TO BE 50.8x50.8x3mm WELDED MESH PANELS FIXED INTO THE 65x50x6mm WELDED FRAME WITH 12No. 4.8mm DIAMETER AYDEL MONOBOLTS Ref:02771-0617 AND ALUMINIUM MESH RETAINING CLIPS TYPE 'A'.

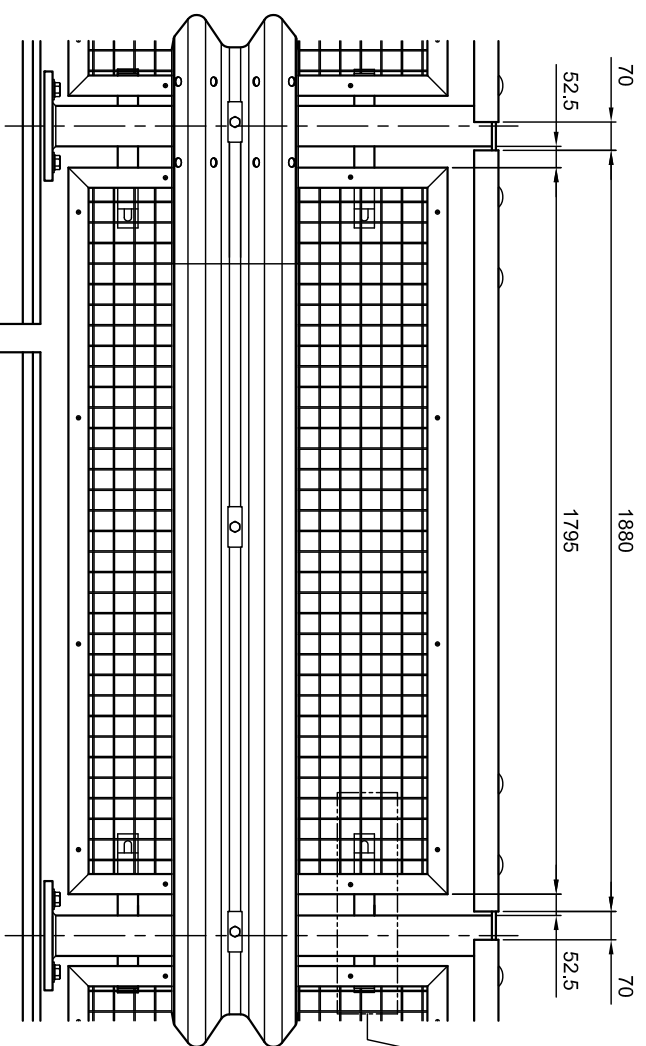
REAR FACE VIEW ON A STANDARD MESH PANEL FRAME.



TRAFFIC FACE VIEW ON A STANDARD MESH PANEL FRAME.



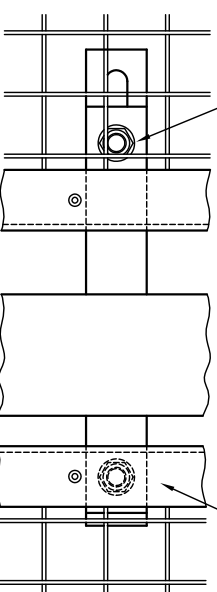
SECTION THROUGH PARAPET.



TRAFFIC FACE VIEW ON A EXPANSION MESH PANEL FRAME.

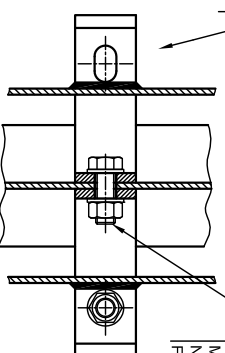
EXPANSION NOTES.
1/1. FIXINGS WITH NYLON NUTS ARE TO BE TIGHTENED TO A TORQUE BETWEEN 30 AND 40Nm.

1No. M16 x 35mm LONG HEXAGONAL HEAD GALVANISED STEEL BOLTS WITH M16 HEXAGONAL STEEL GALVANISED NUT AND 2No. M16 GALVANISED STEEL FLAT WASHER FORM 'F'. REF: F07HS.



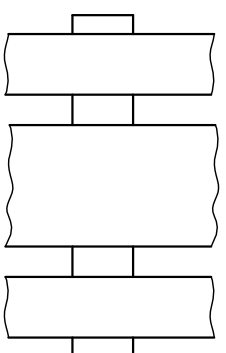
DETAIL 'A'.

STANDARD MID RAIL CONNECTION CLEAT TO HAVE 2No. 30mm LONG x 18mm WIDE SLOTS IN THE LOCATION SHOWN.

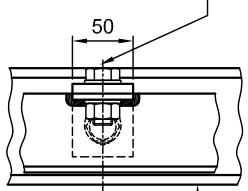


VIEW ON F-F.

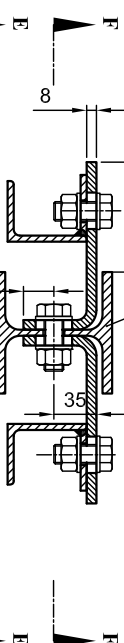
STANDARD MID RAIL CONNECTION CLEAT FIXED THE THE POST WEB WITH 1No. M16 x 45mm LONG HEXAGONAL HEAD GALVANISED STEEL SET SCREWS WITH M16 HEXAGONAL STEEL GALVANISED NUT AND 2No. M16 GALVANISED STEEL FLAT WASHER FORM 'F'.



VIEW ON E-E.



SIDE VIEW.



PLAN VIEW ON MESH FRAME STANDARD CONNECTION.

GENERAL NOTES.
1/1. UNLESS OTHERWISE STATED ALL FIXING TO BE TIGHTENED TO A TORQUE BETWEEN 60 AND 80Nm.



MANUFACTURING TOLERANCES.
TOLERANCES AS SHOWN UNLESS STATED OTHERWISE.
DIMENSIONS: TOLERANCES: GREATER THAN ± 2mm LESS THAN ± 1mm ANGLUAR DIMENSIONS: ± 0°15'

NOTE: ALL ACCUMULATIVE TOLERANCES ARE TO BE CONTAINED WITHIN THE OVERALL TOLERANCE.

SITE ERECTION TOLERANCES: WILL VARY TO SUIT SITE CONDITIONS.

ALL STANDARDS QUOTED ARE DEEMED CURRENT AT THE DATE THE DRAWING IS ISSUED FOR APPROVAL, UNLESS OTHERWISE STATED.

THIS DRAWING TO BE USED ONLY WITH W/O No. [] DRAWING TO BE RETURNED TO DRAWING OFFICE ON COMPLETION OF WORK.

ALL DIMENSIONS IN MM.

Varley and Gulliver Ltd.
Alfred Street, Sparkbrook, Birmingham B12 8JR
Tel: 44 (0) 121 773 2441
Fax: 44 (0) 121 766 6875
Website: www.v-and-g.co.uk

TITLE: STANDARD ARRANGEMENT DRAWINGS OF VARELYGUARD SERIES STEEL PARAPET SYSTEM.

DRAWING NUMBER: V2G - 07.A.