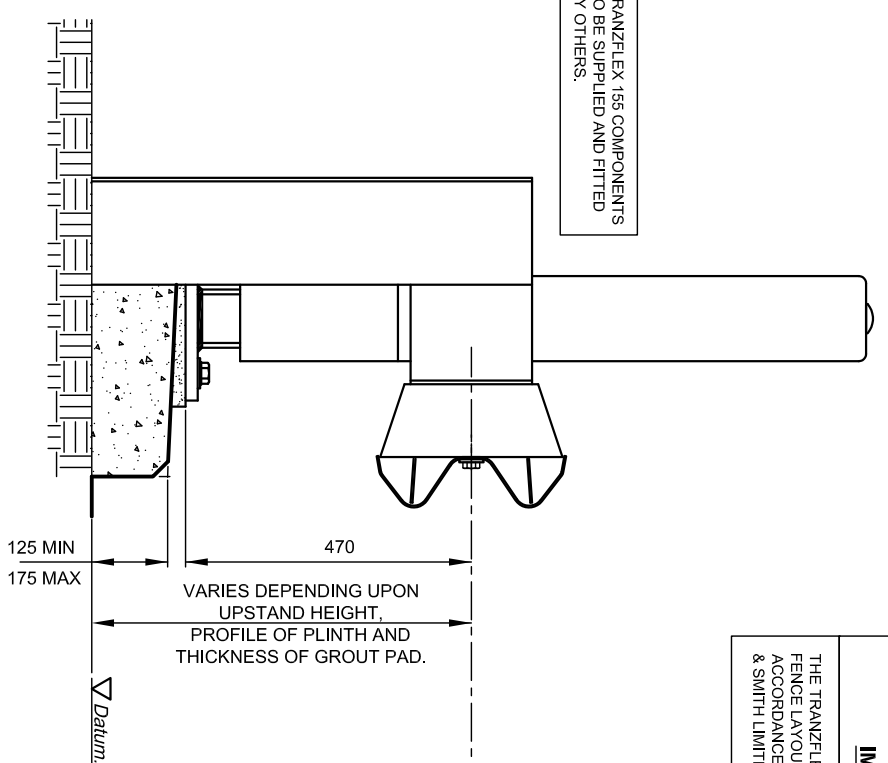


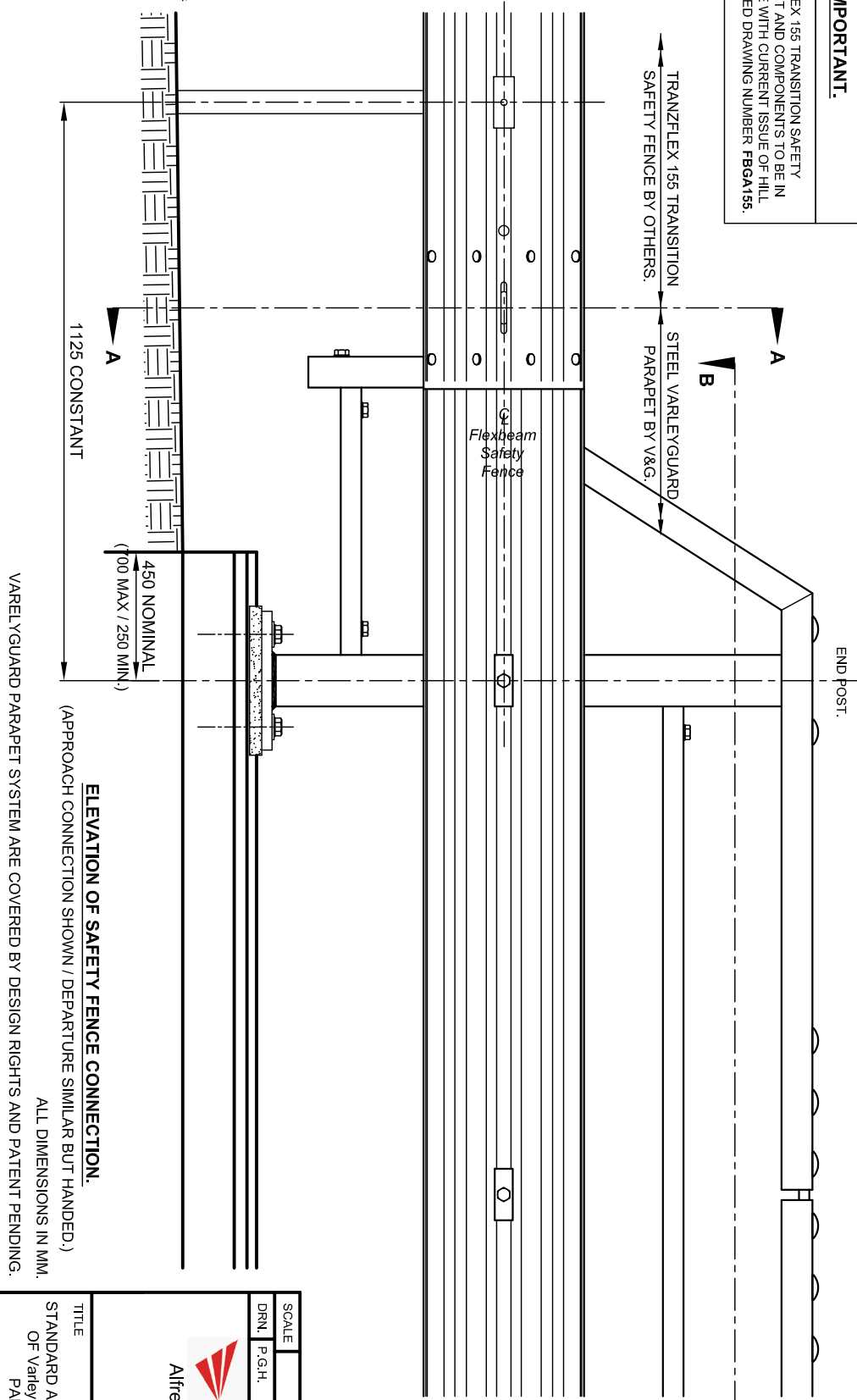
- NOTES:**
- 1/ TO BE READ IN CONJUNCTION WITH HILL & SMITH LIMITED DRAWING NUMBER FBGA155.
  - 2/ UNLESS OTHERWISE STATED ALL FIXINGS AND TRANZFLEX 155 CONNECTION BEAM FIXINGS TO VARLEY/GUARD ARE TO BE M16 GALVANISED STEEL. BOLTS / SETPINS CONFORMING TO BS.3692 GRADE 8.8. M16 GALVANISED STEEL NUTS CONFORMING TO BS.ENISO.4032 GRADE 8. M16 GALVANISED STEEL PLAIN WASHERS CONFORMING TO BS.4320 FORM F.
  - 4/ TRANZFLEX 155 CONNECTION BEAM TO BE STEEL TO BS.EN.10025 GRADE S275. ALL TO BE HOT DIPPED GALVANISED TO BS.ENISO.1461 AFTER FABRICATION.

**IMPORTANT.**  
THE TRANZFLEX 155 TRANSITION SAFETY FENCE LAYOUT AND COMPONENTS TO BE IN ACCORDANCE WITH CURRENT ISSUE OF HILL & SMITH LIMITED DRAWING NUMBER FBGA155.

TRANZFLEX 155 COMPONENTS TO BE SUPPLIED AND FITTED BY OTHERS.



**END ELEVATION OF SAFETY FENCE CONNECTION.**



**ELEVATION OF SAFETY FENCE CONNECTION.**  
(APPROACH CONNECTION SHOWN / DEPARTURE SIMILAR BUT HANDED.)  
ALL DIMENSIONS IN MM.  
VARLEYGUARD PARAPET SYSTEM ARE COVERED BY DESIGN RIGHTS AND PATENT PENDING.

Rev	Date	By	Description
<b>MANUFACTURING TOLERANCES:</b>			
TOLERANCES AS SHOWN UNLESS STATED OTHERWISE.			
<b>DIMENSIONS:</b>			
GREATER THAN + 2mm			
LESS THAN ± 1mm			
1000mm ± 1mm			
ANGULAR DIMENSIONS: ± 0°15'			
NOTE: ALL ACCUMULATIVE TOLERANCES ARE TO BE CONTAINED WITHIN THE OVERALL TOLERANCE.			
<b>SITE ERECTION TOLERANCES:</b>			
WILL VARY TO SUIT SITE CONDITIONS.			
ALL STANDARDS QUOTED ARE DEEMED CURRENT AT THE DATE THE DRAWING IS ISSUED FOR APPROVAL, UNLESS OTHERWISE STATED.			
THIS DRAWING TO BE USED ONLY WITH			
<b>W/O No.</b>			
DRAWING TO BE RETURNED TO DRAWING OFFICE ON COMPLETION OF WORK			

**Varley and Gulliver Ltd.**  
Alfred Street, Sparkbrook, Birmingham B12 8JR  
Tel: 44 (0) 121 773 2441  
Fax: 44 (0) 121 766 6875  
Website: www.v-and-g.co.uk

SCALE	DATE
P.G.H.	27/01/2011
CHK.	D.V.C.

TITLE: STANDARD ARRANGEMENT DRAWINGS OF VARLEYGUARD SERIES STEEL PARAPET SYSTEM.

DRAWING NUMBER: V2G - 06.