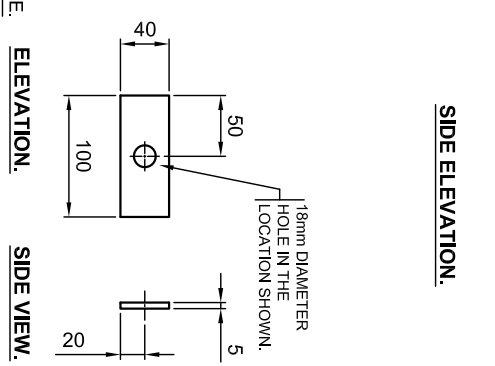
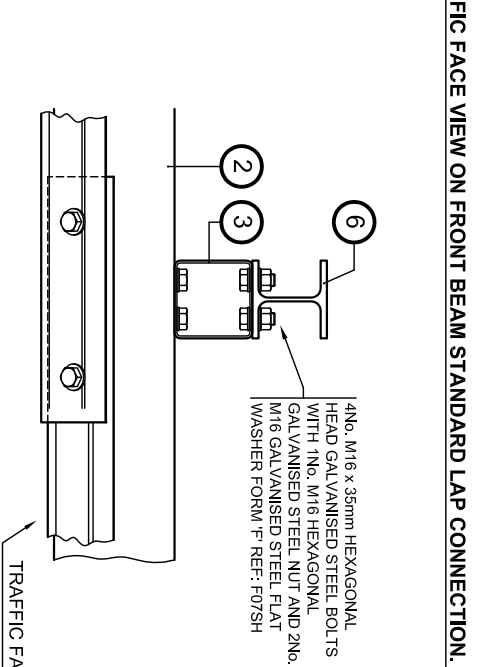
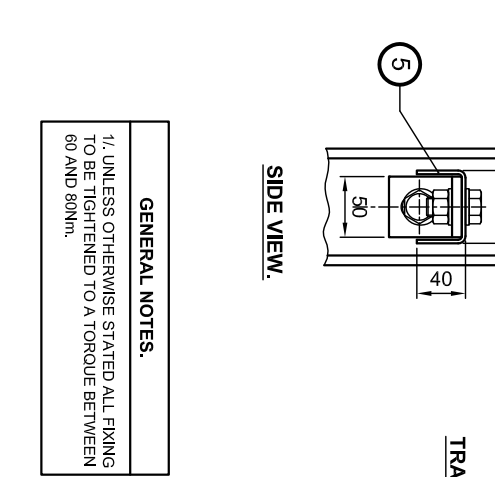
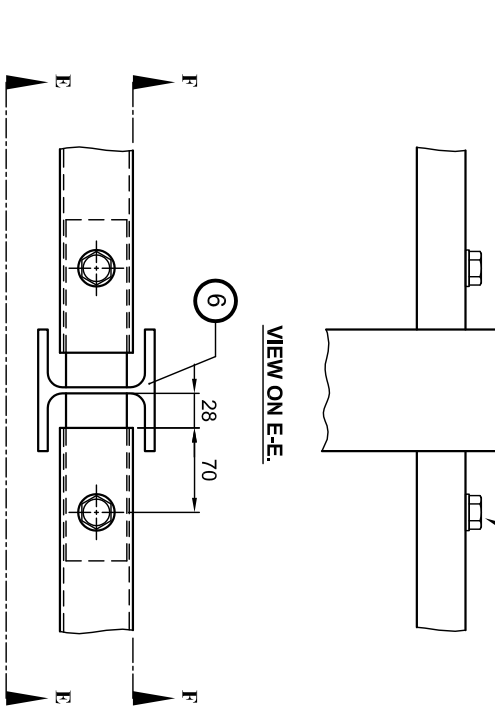
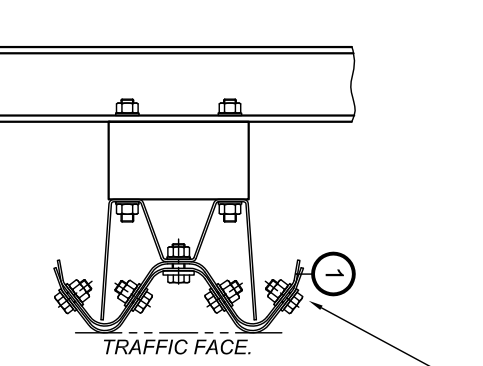
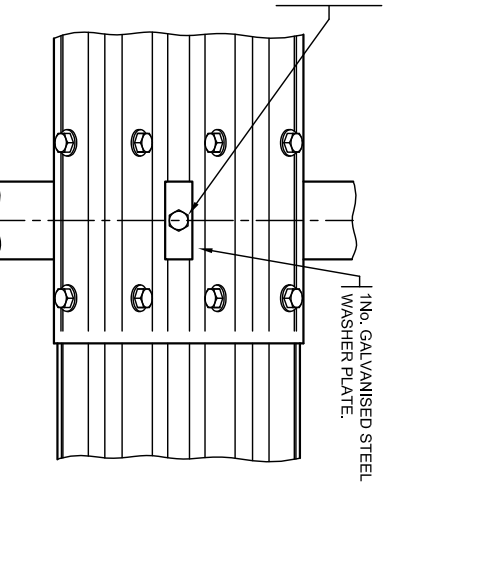
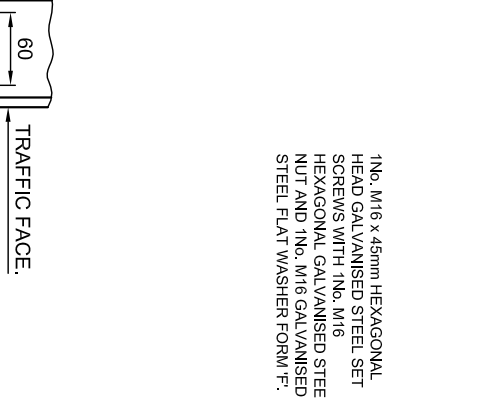
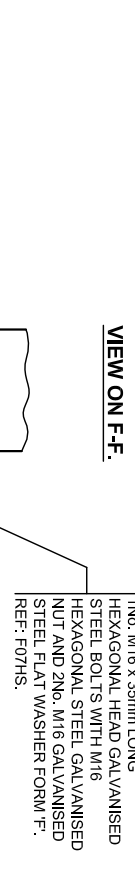
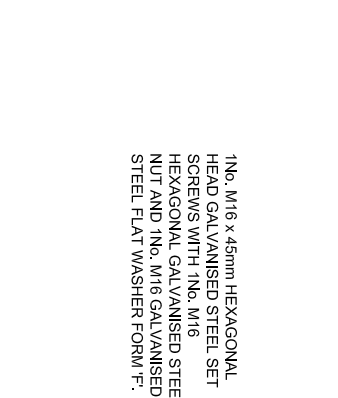
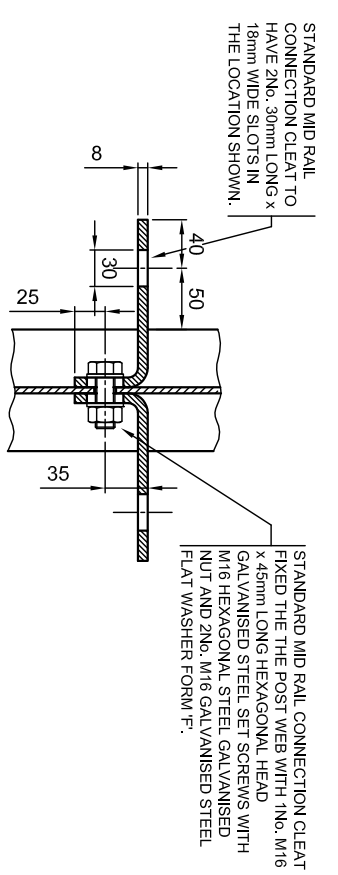
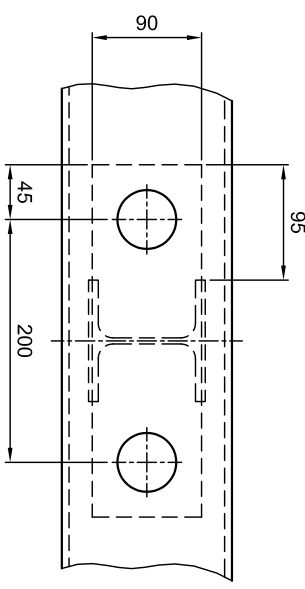


MATERIAL SPECIFICATION.			
ITEM	SPECIFICATION	ITEM	SPECIFICATION
TOP CLEATS.	ALL STEEL SECTIONS ARE TO BE IN ACCORDANCE WITH BS EN 10025-1 & BS EN 10025-2.	BOLTS.	M20 TOP RAIL AND JOINT BOLTS TO BE TO DIN 663. ALL OTHER M16 BOLTS / SETPINS TO BE GALVANISED STEEL TO CONFORM TO BS 3692 AND BS EN ISO 4014 OR BS EN ISO 4017 GRADE 8.8.
JOINT PLATES.	TOP CLEAT CONNECTION PLATES, JOINT'S PLATES TO BE GRADE S355JO. WASHER PLATES AND INTER RAIL CLEATS TO BE GRADE S275JR.	NUTS.	GALVANISED STEEL NUTS TO CONFORM TO BS 3692 AND BS EN ISO 4032 GRADE 8.
INTER RAIL LUGS.	INTER RAIL LUGS TO BE GRADE S355JO.	WASHERS.	GALVANISED PLAIN WASHERS TO BE M20 FORM 'F' AND M16 FORM 'F' CONFORMING TO BS 4320.



GENERAL NOTES.
1/ UNLESS OTHERWISE STATED ALL FIXING TO BE TIGHTENED TO A TORQUE BETWEEN 60 AND 80Nm.

PLAN VIEW ON MID RAIL STANDARD CONNECTION.

PLAN VIEW ON FRONT BEAM STANDARD LAP CONNECTION.

PLAN VIEW ON TOP RAIL TO POST CONNECTION.

TRAFFIC FACE VIEW ON TOP RAIL TO POST CONNECTION.

18No. M16 x 35mm HEXAGONAL HEAD GALVANISED STEEL BOLTS WITH 1No. M16 HEXAGONAL GALVANISED STEEL NUT AND 2No. M16 GALVANISED STEEL FLAT WASHER FORM 'F'. REF: F07SH.

Rev	Date	By	Description

SECTION	DESCRIPTION	SCALE
1	MAIN BEAM SECTION 312x50x3	1:1
2	BACKING BEAM SECTION 200x155x3	1:1
3	SPACER SECTION 100x100x3 SHS	1:1
4	TOP RAIL SECTION 100x100x3 CHANNEL	1:1
5	INTER RAIL SECTION 60x40x3 CHANNEL	1:1
6	POST SECTION HE 100.A	1:1

W/O No.	DESCRIPTION

Varley and Gulliver Ltd.
Alfred Street, Sparkbrook, Birmingham B12 8JR
Tel: 44 (0) 121 773 2441
Fax: 44 (0) 121 766 6875
Website: www.v-and-g.co.uk

TITLE: STANDARD ARRANGEMENT DRAWINGS OF VARELYGUARD SERIES STEEL PARAPET SYSTEM.

DRAWING NUMBER: V2G - 02.