

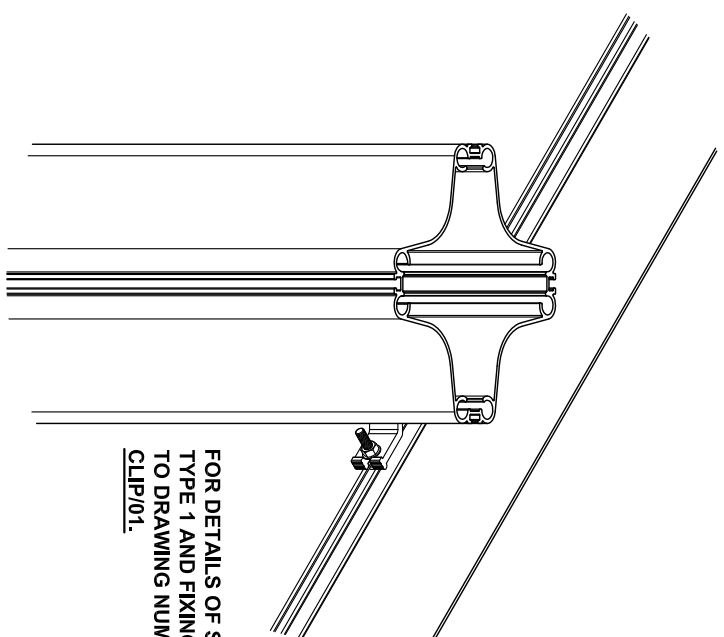
**MULTI LEG SUPPORT.**

**H2000 PASSIVE MAST INFORMATION.**

Section Size (mm)	Section Weight (kg/m)	Baseplate Weight (kg)	Bending Capacity (kNm)	Bending Stiffness (kNm <sup>2</sup> )	Torsional Capacity (kNm)	Torsion Stiffness (kNm <sup>2</sup> )	Shear Capacity (kN)
212 x 212	10.68	13.3	35	625	18.1	162.36	55.5

**GENERAL NOTES.**

- 1/ THE MINIMUM EDGE DISTANCE SHOWN FOR ANCHORAGES IS TO ELIMINATE ANY REDUCTION FACTORS.
- 2/ SIGN FOUNDATION TO BE PROVIDED BY OTHERS AND CAN PROTRUDE ABOVE GROUND LEVEL BY A MAXIMUM OF 50mm.
- 3/ THE FOUNDATION DESIGN IS THE RESPONSIBILITY OF THE SCHEME DESIGNER. THE FOUNDATION SHALL BE DESIGNED AS RIGID IN ACCORDANCE WITH ANNEX A.2 OF BS.EN.12767:2007.
- 4/ SIGNAGE TO BE PROVIDED AND INSTALLED BY OTHERS. SIGN MATERIAL, CHANNEL TYPE AND CHANNEL SPACINGS COULD AFFECT THE POST LOCATIONS.

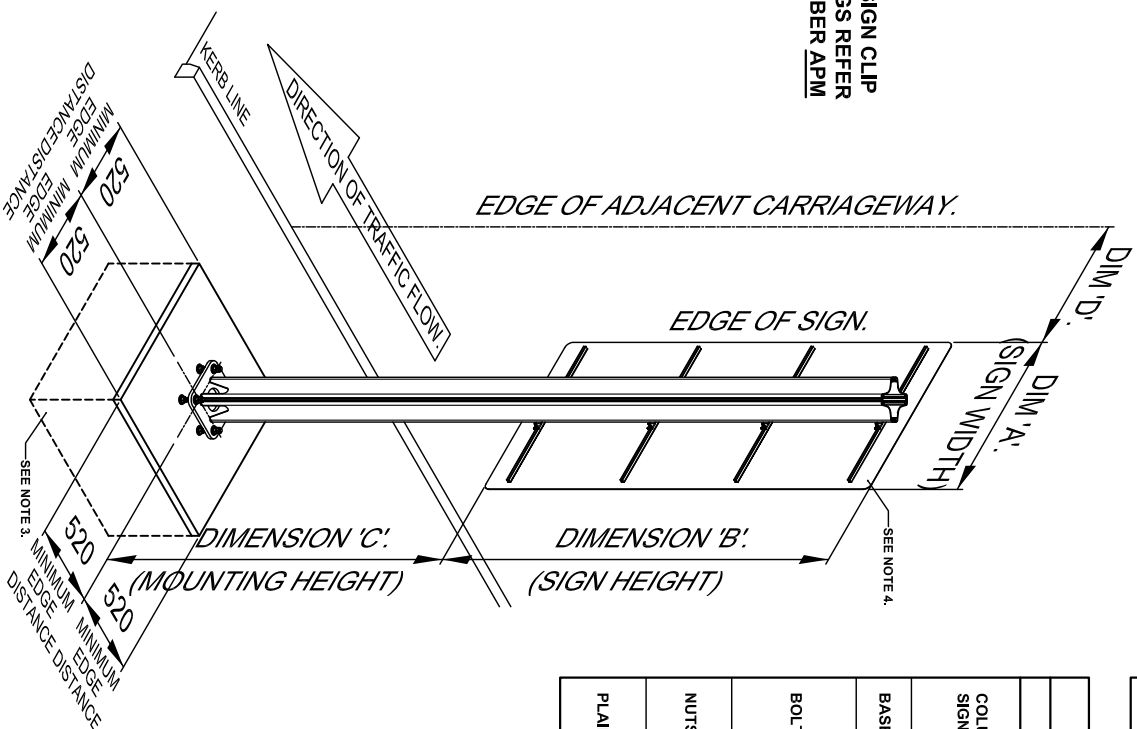


**ENLARGED VIEW ON SIGN ATTACHMENT.**

FOR DETAILS OF SIGN CLIP TYPE 1 AND FIXINGS REFER TO DRAWING NUMBER **APM CLIP/01**.

**H2000 PASSIVE MAST PERFORMANCE.**

BS.EN.12767:2007.	
IMPACT TEST CRITERIA.	35 km/h and 100 km/h
ENERGY ABSORPTION CATEGORY.	NE
SPEED CLASS.	100
OCCUPANT SAFETY LEVEL.	2



**SINGLE LEG SUPPORT.**

**MINIMUM INFORMATION TO BE PROVIDED FOR PASSIVE MASTS.**

	SINGLE LEG SIGN	MULTI LEG SIGN
DIMENSION 'A' - SIGN WIDTH	■	■
DIMENSION 'B' - SIGN HEIGHT	■	■
DIMENSION 'C' - SIGN MOUNTING HEIGHT	■	■
DIMENSION 'D' - DISTANCE FROM SIGN EDGE TO CARRIAGEWAY	■	■
POST CENTRES.	■	■
SIGN LOCATION.	■	■

**MATERIAL SPECIFICATION.**

ITEM	SPECIFICATION
COLUMN AND SIGN CLIP.	ALL EXTRUSIONS ARE TO BE ALUMINIUM ALLOY IN ACCORDANCE WITH BS.EN.5745, BS.EN.573-3, BS.EN.573-4, BS.EN.755-1, BS.EN.755-2, BS.EN.755-5, BS.EN.755-7 AND BS.EN.755-9, WITH A MINIMUM PROOF STRESS OF 210N/mm <sup>2</sup> FOR THE COLUMN SECTION.
BASEPLATE.	BASEPLATE TO BS.EN.10025 GRADE S355J2G3, HOT DIPPED GALVANISED TO BS.EN.ISO.1461.
BOLTS.	FOR HOLDING DOWN SETPINS SPECIFICATION REFER TO DRAWING NUMBER ECL.603. M10 SETPINS TO CONFORM TO BS.EN.ISO.4017 AND BE STAINLESS STEEL TO GRADE A4 BUMAX 109.
NUTS.	FOR HOLDING DOWN NUTS REFER TO DRAWING NUMBER ECL.603. M8 NUTS TO CONFORM TO BS.3692 AND BE STAINLESS STEEL TO BS.EN.ISO.3506-2 GRADE A2 OR SIMILAR.
PLAIN WASHERS.	FOR HOLDING DOWN BOLT WASHERS REFER TO DRAWING NUMBER ECL.603. M8 NUTS TO CONFORM TO BS.4220 AND TO BE STAINLESS STEEL TO BS.EN.ISO.3506 GRADE A4 OR A2.



CE  
No. 0086-CPD-565203

**SECTION SCHEDULE**

1		COLUMN SECTION VARS 102
2		SIGN CLIP SECTION 110738
3		BASEPLATE SECTION

ALL STANDARDS QUOTED ARE DEEMED CURRENT AT THE DATE THE DRAWING IS ISSUED FOR APPROVAL, UNLESS OTHERWISE STATED.

THIS DRAWING TO BE USED ONLY WITH W/O.No. **W/O.No.**  
DRAWING TO BE RETURNED TO DRAWING OFFICE ON COMPLETION OF WORK.



Varley and Gulliver Ltd.  
Alfred Steel, Sparkbrook,  
Birmingham B12 8UR  
Tel. 44 (0) 121 773 2441  
Fax. 44 (0) 121 766 6975  
Website. www.v-and-g.co.uk

DRAWING NUMBER  
**APM H2000 - 01.A.**